

TEL 1 (563) 322-6800

FAX 1 (563) 322-4003

ORDERS ONLY 1 (800) 798-7979 US & CANADA

NEW! QUESTION & CONSULTATION PHONE

1 (563) 322-6800

MAZON



MANUFACTURERS OF
**PURE CIDER
AND
WINE VINEGARS**



*Davenport,
Iowa*

411 BRADY STREET
DAVENPORT, IOWA 52801-1518

1,114

AUTHENTIC

OUR
25th
YEAR

Patterns

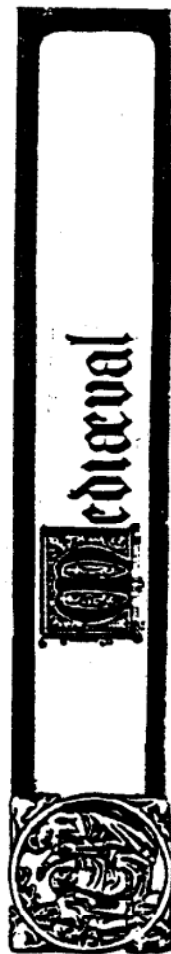
FROM THE

Past

Catalogs are not issued
on a regular schedule.
Inquire about new editions.

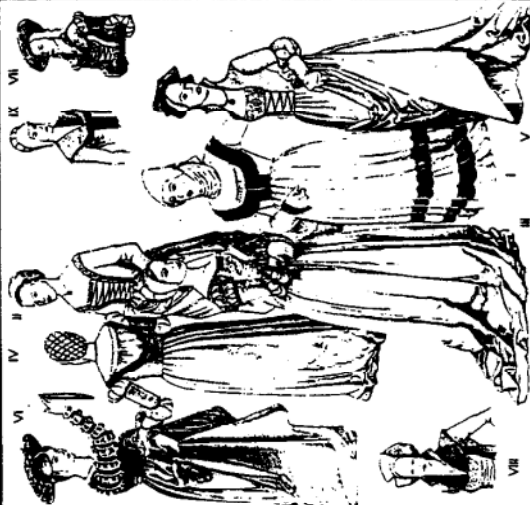
**AND A FEW HARD TO FIND
PATTERNS FROM THE PRESENT**

CATALOG - \$5.00 + Postage



Medieval Miscellanea has created our copy-righted Period Patterns for use in sewing period clothing that looks and fits authentically. The patterns are designed by professional costumers after rigorous research to ensure authenticity. Each pattern includes complete full-sized cutting patterns; sizes are based on standard commercial pattern sizes and all sizes listed on the pattern envelope are included in each packet (the patterns can easily be scaled up or down for other sizes). Detailed, fully-illustrated step-by-step sewing instructions and general instructions (seam finishes, etc.) are given, and most patterns include suggested pattern layout. Each pattern has many pages of historical notes illustrated from contemporary sources, for background information, enhancement & variation of the clothing. The back cover describes the garments included (with country & approximate date where possible), gives the sizing, fabric & notions required for each garment in each size, and suggested fabric types for each garment. The notes by each pattern in this catalog are to give an idea of the style and period of each pattern, and the people who wore such clothes.

Period Patterns no. 46



WOMEN'S GERMAN PUFF AND SLASH GOWNS c. 1500-1545 AD (sizes 6-20)
© Medieval Miscellanea publication, © 1993

WOMAN'S GERMAN PUFF & SLASH GOWNS c. 1500-1545 AD
(Multi-sized 6 - 20)

German Renaissance Gowns includes 8 styles as shown.

The fit of the bodice is very snug with the bust flattened and "stuffed." The shoulders are held well back.

All of the skirts are cartridge pleated to the waist and bell out at the top.

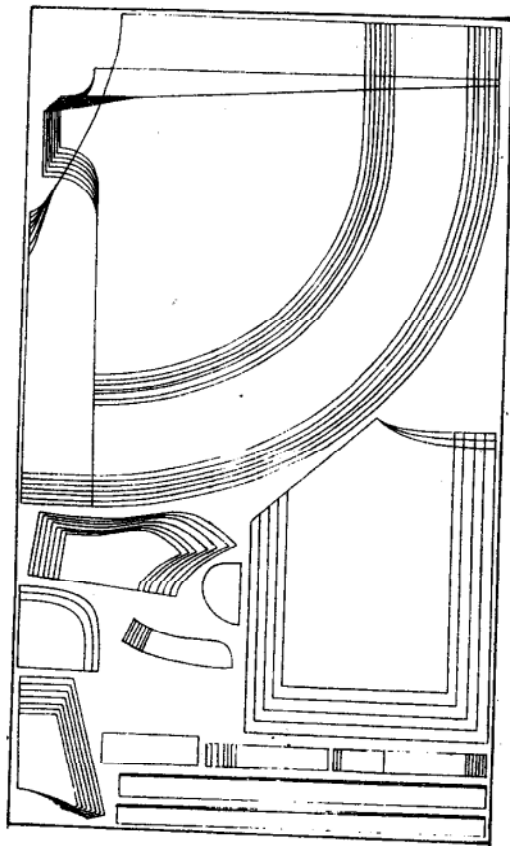
The gowns are to be worn over a chemise (visible at the neck of View I and under the sleeves of Views IV & V).

Correct chemises are in pattern #90, Women's Undergarments.

Pattern - \$19.95 each.

1 (800) 798-7979
9 - 5 weekdays
or by chance.

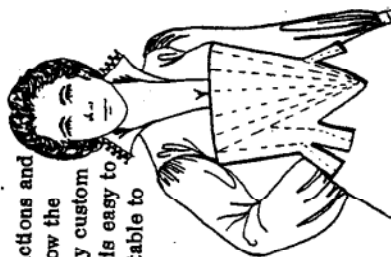
Amazon Drygoods
411 Brady Street
Davenport, IA 52801-1518



Example of the pattern sheets - the pattern markings can hardly be seen at this scale (5% of the 84" x 48" original), so for clarity's sake they have been omitted).

A Pair of Bodies

This set of instructions and diagrams will allow the making of a totally custom fitted corset that is easy to make and comfortable to wear.



Any size may be made.

\$6.95

+ Shipping.

One of the most difficult items of historic clothing to fit and wear properly is the early straight-fronted corset. Without the correct corset the tapered tubular look and fit of Renaissance, Tudor and Elizabethan gowns cannot be achieved.

Amazon Drygoods

TIGHTS FOR MEN AND WOMEN

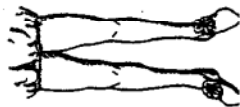
Cotton Supplex (100% cotton is too fragile)

Black, White, Cream or Navy

Size A - 5' - 5'9", 90 - 160 lbs. . . . \$16.95

Size B - 5'10" - 6'2", 160 - 200 lbs. . . \$18.95

Not returnable or exchangeable, fit cannot be guaranteed. Height and weights approximate.



Period Patterns no 23

MEN'S COTEHARDIES, C. 1340-1400 (sleeves 36-46)

(pattern no. 43), often with hoods. Puffed chests and full sleeves became fashionable on cotehardies by 1350.

Sideless surcoats and cotehardies for both sexes could be plain & somber, or wildly colorful; heraldic motifs were most common on these garments. Both sexes began wearing houplandes (pattern no. 26) over a cotehardie after 1380, and cotehardies as outerwear for men became unfashionable before 1425. Cotehardies with or without sideless surcoats remained fashionable for women, especially as regal ceremonial garments, until well into the 16th century.

Period Patterns no. 21 has 3 cotehardies and 4 sideless surcoats. Pattern no. 23 has 5 cotehardies and 3 hoods. Patterns no. 21 & 23 are

Period Patterns no 26

HOUPLANDES c. 1390-1460 A.D. (sleeves 48-118 & 36-46)

Houplandes were the last truly Europe-wide, as well as unisex, fashion. This comfortable style apparently first developed in Italy around 1380, but spread throughout Europe by 1400. Belted or loose, houplandes were worn over a cotehardie or a second houplande with tight sleeves. Many variations existed, a few of which were limited mostly to one area or sex. One new style for men appeared as early as 1420, with many others for both sexes after 1450; by 1475, although still seen, houplandes were no longer fashionable.

Period Patterns no. 26 has 6 houplandes for either sex, with sleeves & necklines interchangeable. The sleeves of the cotehardie underneath are faked, but the fake sleeves can be left off and a cotehardie worn instead.

Tunics were perhaps the first European-wide style, worn from Ireland to Russia, Scandinavia to Byzantium to Spain. They were worn by almost everyone from Roman times through the 1300's, with some of the same variations being seen again and again (some appear to be limited to one sex or the other, but most were universal). The one basic change was the discovery in the first half of the 14th C. that one could cut the armholes and sleeve caps curved, and achieve a better fit. With this, the style continued in more or less modified form for another 200 years, among the lower classes especially.

Pattern no. 16 has 14 tunics for men, women and children, with most parts being interchangeable.

Pattern - \$19.95 each.

Period Patterns no 16

TUNICS, C. 600-1300 A.D. (chest sleeve 16-56")

Period Patterns no 21

COTEHARDIES & SIDELESS SURCOATS, 14th & 15th C. (Sleeves 48-118)

A style like the cotehardie, which was worn for over 200 years from Bohemia to England, Norway to Spain, can only be called a classic. While there were regional variations, the basic cut was the same throughout Europe.

Women's cotehardies were tight to the hips, usually with long tight sleeves. They would be worn over a chemise (pattern no. 90). The major change came around 1340, with the discovery of how to cut curved armholes and sleeve caps, making gussets under the arm unnecessary. Sideless surcoats, worn over cotehardies, roused the ire of the church because their revealing cut was considered too seductive.

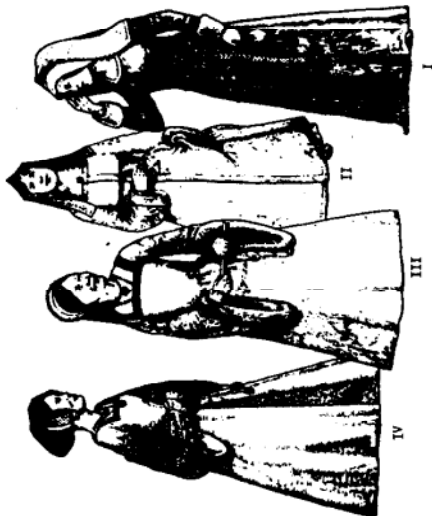
Men's cotehardies were initially tight to the hips, with long tight sleeves. They were worn over a shirt and hose

Period Patterns no 53



EARLY TUDOR MEN'S GARMENTS, c. 1485 - 1527 (Sleeve 38-40)

Period Patterns no 51R



EARLY TUDOR GOWNS, c. 1480 - 1525 (Sleeve 38-40)

The Tudor period, especially after 1509, marks the beginning of the Renaissance in England, and fashion reflected the change. Tudor styles for both sexes combined elements of German, Spanish and Italian fashions, with heavy French influence overall.

Henry VII, who usurped the throne in 1485, was extremely frugal, & fashion changed little during his reign; the houppeland became a robe opening down the front, soon left unbelted and open, worn over a skirted doublet, shirt & hose (pattern no. 43). Henry VIII inherited a large treasury as well as the throne at age 18, and the court blossomed. He was nouveau riche, insecure, aggressive, and blatantly masculine, all of which was reflected in fashion. As the king aged he favored robes to hide his increased bulk, creating a square silhouette.

Women's fashions were less flamboyant than the men's. The kirtle was almost identical to a cotehardie (pattern no. 21), with the addition of cuffs. The skirts soon began to be cut separately from the bodice, the neck became square, and with the adoption of corsets and farthingales (pattern no. 90) the style developed into the silhouette of a small cone inverted into a larger one. The underskirt & undersleeves were not sewn to the gown, allowing more variety.

Period Patterns no. 51 has 4 gowns; pattern no. 53 has 3 gowns, 3 skirted doublets, 1 skirted jerkin, 2 skirtless doublets, & 3 shirts. The quintessence of "Tudor" fashions is view IV in both patterns.

Pattern - \$19.95 each.

The late Tudor period was a time of transition & uncertainty, with 3 rulers in 11 years (not to mention Lady Jane Grey, who only ruled for 9 days), and violent switches of the country from Protestant to Catholic to Protestant again. Very few new elements of style appeared during Edward's short reign. During Mary's reign, her marriage to Phillip reintroduced Spanish styles, with dark colors favored, but the basics of the previous style remained the same, lasting into the 1570s. Under Elizabeth, women's fashions came to visually dominate the court. In the 1570's the drum farthingale (pattern no. 90) radically changed the shape of women's skirts; other, less sweeping changes also occurred, such as the high standing ruffs. "Elizabethan" styles lasted well after her death in 1603 - the new king saw no reason to pay for new clothes for the queen, since Elizabeth had left such an extensive wardrobe!

During the early part of this period the men's styles changed faster than those for women. Gowns declined in popularity, and new emphasis was placed on the lower trunk. Even when the peasecod belly developed on the doublet, though, men's styles could not compete with the sheer bulk of the women's gowns.

Period Patterns no. 56 has 3 Late Tudor gowns, & 3 Elizabethan gowns. The stomacher, underskirts & undersleeves are not sewn to the gowns.

Pattern no. 58 has 7 doublets and 7 pairs of hose;

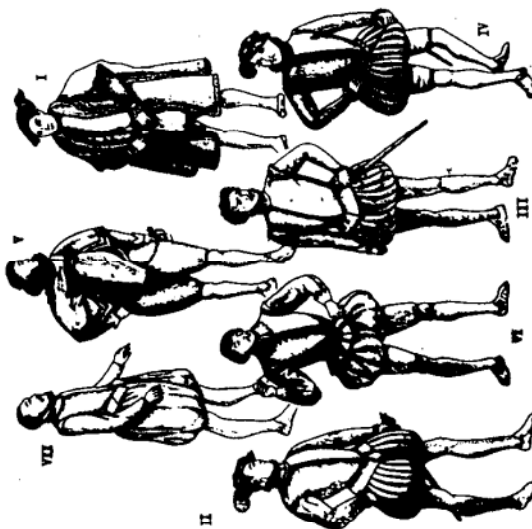
Pattern - \$19.95 each.

Period Patterns no 56



LATE TUDOR & ELIZABETHAN GOWNS, c. 1545-1640 A.D. (Sleeve 38-40)

Period Patterns no 58



MEN'S ELIZABETHAN GARMENTS, c. 1550-1605 A.D. (Sleeve 36-48)

Period Patterns no 52

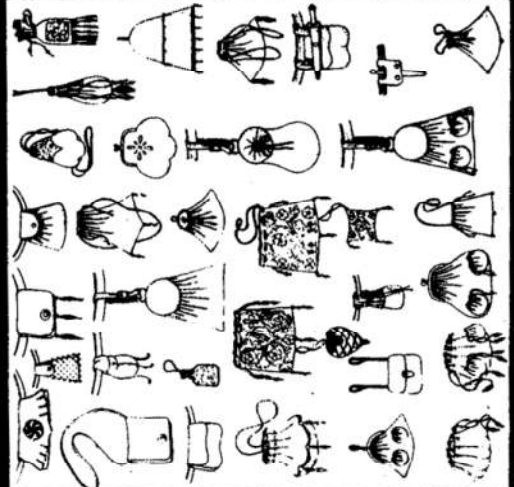


THIRTEEN-SEA HEADRESSES, C. 1400-1500

Even in headresses the Renaissance was much more individualistic than the Middle Ages had been. Many radically different styles of headresses were fashionable in the Tudor period in France, England, Flanders and the Netherlands. In general, the more elaborate headresses were smaller and closer to the head than previously; the simpler ones were more tailored than the many different variations of veils formerly worn. Some styles were seen almost exclusively in one area or country, while others were more widespread. Period Patterns no. 52 has 17 headresses.



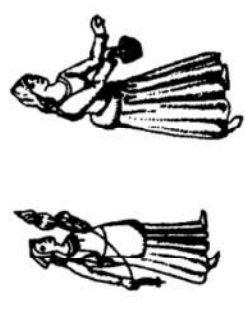
Period Patterns no 93



BAGS, PURSES & POUCHES, C. 1000-1600 A.D.

Bags, purses & pouches were essential in ages when the use of pockets in clothing was unknown and only the rich had secure storage for their small valuable items. As with other necessary items of clothing, pouches could be merely functional or highly decorative. Bags for special purposes developed, such as hunting bags (to hold game) & pilgrims bags (big enough to carry everything necessary for a long journey).

Pattern - \$19.95 each.



Chain mail and plate armor were very expensive, and out of the reach of most soldiers in the Middle Ages; these had to make do with padded garments. Even those who could afford armor had to wear padded garments underneath for comfort, while other garments could be worn over armor for additional protection or decoration. Some garments were used for civilian as well as military wear.

The primary garment for all soldiers was the padded gambeson, worn alone or under armor. Surcoats, worn over armor, were decorative, and gave some limited protection from the elements. Coats of plates gave added protection over mail. Padded leathers & angel-wing tunics, both with puffed chests, could be worn over or under breastplates, or alone; the tunic could also be worn as civilian wear. Padded coifs gave protection to the head, and were necessary for comfort under mail coifs and helmets. A simple collar or gorget gave additional protection to the neck. Cuissees were padded thigh pieces, often with plates and metal knee caps attached. Hose ranged from baggy to skin-tight, dull to wildly colorful; fighting hose could be padded in places.

These patterns are functional SCA fighting garb. Period Patterns no. 101 has 3 gambesons, 3 surcoats, 3 hose, 1 coccipiece, 1 cuisse, and a renal belt (with pockets for plates to protect the kidneys). Pattern no. 102 has 2 coats of plates, 1 leotard, 1 angel-wing tunic (with or without dogs on the sleeves), 3 coifs and 1 gorget. Patterns no. 101 & 102

Pattern - \$19.95 each.

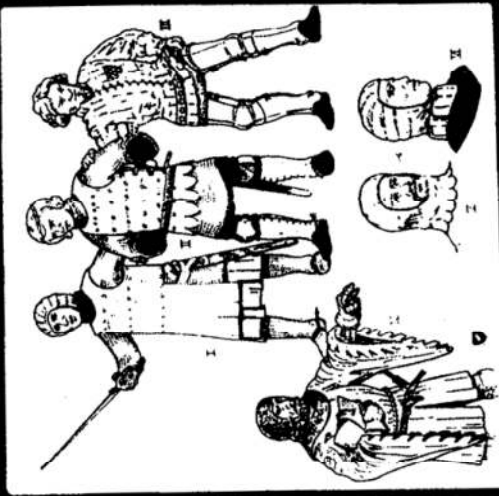
Period Patterns no 101



MEDIEVAL MILITARY GARMENTS
SIZES S M L XL

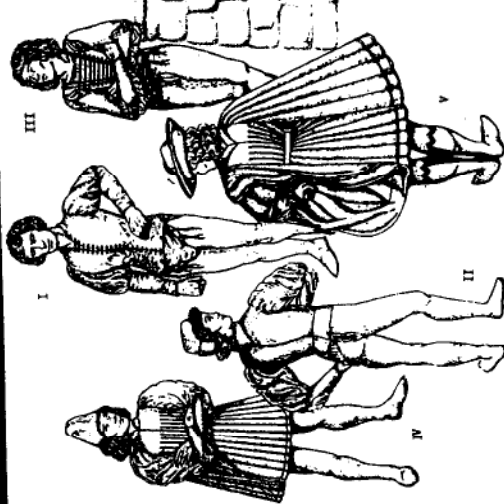
Amazon Drygoods

Period Patterns no 102



MORE MEDIEVAL MILITARY GARMENTS
SIZES S M L XL

Period Patterns no 43



MEN'S ITALIAN RENAISSANCE GARMENTS, c. 1420-1500 A.D. (sketches 36-48)

The Renaissance of the 15th & 16th centuries began in politically splintered Italy. The age was humanistic; as were the people, the clothing was individualistic, competitive, even playful. While there were broad similarities, regional variations were the norm.

Men's fashions began to evolve around 1420. The cotehardie became the doublet, first with a waist seam, then rapidly shortening to the waist. This was worn over a shirt. The houplande became a robe open in the front, worn open or shut, often belted. A tabard could be worn instead of the robe, and young men often wore the doublet alone. Codpieces were worn, and separate hose leggings became tight.

Fashion for women changed radically after 1460. The bodice was cut separately from the skirt, above the natural waist, and became tight-fitting. Skirts could be gathered or pleated, or neither. They were often split in front to show the skirt of a sleeveless underdress, which could also show at a V-neck. The sleeves could be slashed to show the chemise sleeve (pattern no. 90), and were often laced or tied to the bodice, rather than sewn. A tabard was occasionally worn over the gown.

Period Patterns no. 41 has 7 gowns & 1 tabard. 3 have split skirts & under-skirts, 2 with stomachers as well, to fake an underdress; these can be left off, and an underdress worn instead. 4 gowns have tied sleeves. Period Pattern no. 43 has 3 doublets, 3 shirts, 3 hose, 2 codpieces, a tabard and a gown.

Pattern - \$19.95 each.

Period Patterns no 90

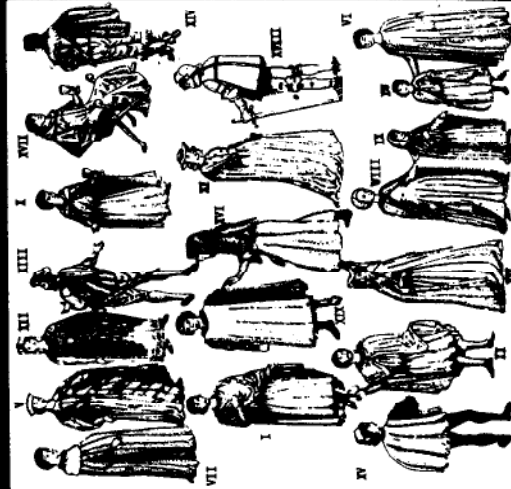


WOMEN'S UNDERGARMENTS, RUFFS, COLLARS AND CUFFS, c. 1500-1650 A.D. (sketches 8-18)

Chemises were worn for comfort, to keep body dirt off the outer clothes, and for sleeping; they also could show decoratively at the neck, wrist, and/or through slashes in the sleeve (patterns no. 41, 51 & 56). Corsets and farthingales (hooped petticoats) reshaped the body into the fashionable silhouette (patterns no. 51 & 56). These undergarments as well as ruffs, collars and cuffs were worn for style and social status (the more elaborate and constricting they were, the less practical, thus the higher the status of the wearer). Many styles (such as pattern no. 56) are not complete without the proper undergarments and accessories.

Period Patterns no. 90 has 5 chemises, 2 corsets, 2 parteletts, 2 ruffs, 2 bumrolls, 3 collars, and cuffs.

Period Patterns no 92



WOMEN'S UNDERGARMENTS, RUFFS, COLLARS AND CUFFS, c. 1500-1650 A.D. (sketches 16-34)

Throughout the "dark ages" and medieval period capes were indispensable for protection against the weather, as well as fashionable articles in their own right. While there were some variations, the same basic capes were seen throughout extended Europe.

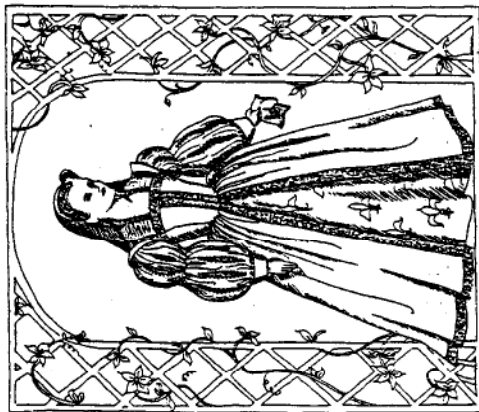
In the Middle Ages the cut of capes became more sophisticated, and many new variations appeared. Tabards and gannaches reflected the growing preoccupation with fit, which culminated in the Renaissance with capes often being reduced to a mere fashion accessory.

Pattern no. 92 has 13 capes, 3 separate hoods, a tabard, small capelet, and a gannache. Sized for chests 16" to 54".

Pattern - \$19.95 each.

Elizabethan Costumes

HISTORIC CLOTHING CO. - Multi-sized, \$19.95 each

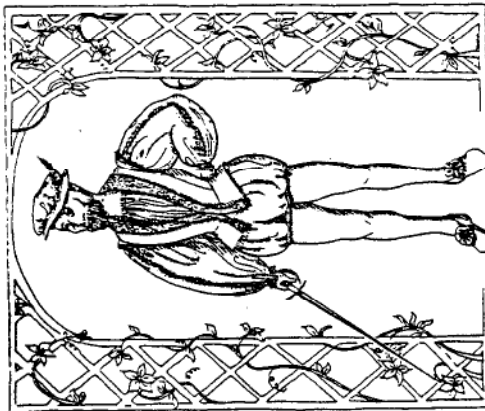


WOMAN'S ELIZABETHAN COSTUME
Dress, Underskirt, Petticoat, Kicker and Veil included. Wear over "Payre of Bodys" (Stays) shown on page 2.

3 sizes included.
Easily adjusts to
inbetween sizes.

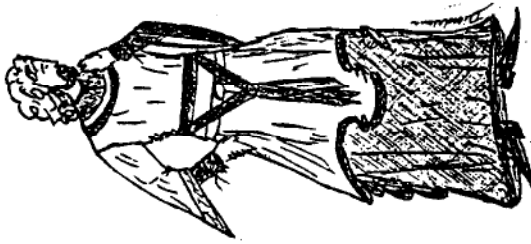
Women	B	W
Sm.	32-34	24-25
Med.	34½-36½	26-27
Lg.	37-39	28-29

Men	C	W
Sm.	38	33
Med.	40	35½
Lg.	42	38



MAN'S ELIZABETHAN COSTUME
Doublet, Shirt, Rumpkin Breeches and Cap included. Wear over Tights shown on page 2.

WEARABLE HERALDRY - \$11.95
Heraldry on garments from the early Middle Ages through the Cavalier period for Men, Women and Heralds. Profusely illustrated book.



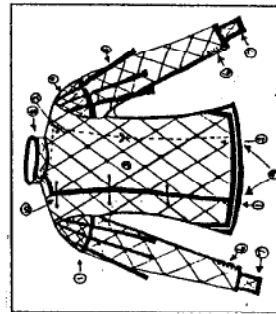
KNIGHT OF THE MONTH

KNIGHT OF THE MONTH \$6.00
Six Knights and Men-at arms from the 12th to the 15th centuries with adaptations for reenactment usage. Fully illustrated with armor and costume details. Not a book.



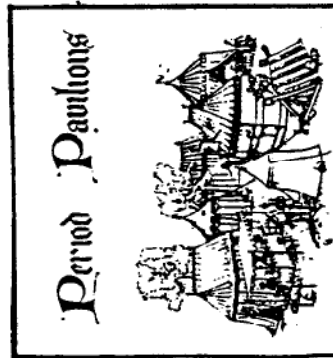
MORE KNIGHTS OF THE MONTH

MORE KNIGHTS OF THE MONTH
Another six knights to complete the preceding series, not a book. \$6.00



FANTASTIC GAMBAZONS \$12.00
The padded tunic worn under armor to protect the medieval combat fighter. Complete instructions on "how-to" using methods and materials that will last and last, and fit every size and shape. Ten different styles and variations in book form.

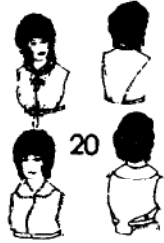
12TH CENTURY NORMAN COSTUME
FOR MEN OR WOMEN . . . \$8.00
A plain tunic with a flowing overtunic and belt. Very nice lines on two simple garments to trim as you wish. Patterns and instructions in book form.



PERIOD PAVILIONS . . . \$14.95
A book of fully illustrated plans with scale patterns for making round, square, rect., and Viking tents. Includes variations and canopies, general hints and tips, many pages of decorated pavilions, accessories, and how to convert a regular tent.

See the GENERAL catalog
(\$4.00 postpaid 1st class)
for the hard - to find Notions.









EIGHTEENTH CENTURY PATTERNS



Patterns are described at right on page 9.
All patterns are multi-sized.
\$14.50 each plus shipping.

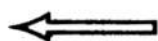
Amazon Drygoods
1 (800) 798-7979
411 Brady Street
Davenport, IA 52801-1518

GLOVES

	<i>Beaded Elegance</i> Pattern No. GP500  \$10	<i>Floral Fantasy</i> Pattern No. GP503  \$10	<i>Moving Forward</i> Pattern No. GP505  \$10	<i>Sassy Sophisticate</i> Pattern No. GP509 (Two-Way Lycra Only)  \$10
<i>Gala Gauntlet</i> Pattern No. GP512  \$10	<i>Grande Finale</i> Pattern No. GP519  \$10	<i>Manly Pursuits</i> Pattern No. GP524 (Leather Only)  \$10	<i>Luxury Leather</i> Pattern No. GP531 (Leather Only)  \$10	<i>Grand Finale</i> Pattern No. GP534 (Leather Only)  \$10

Glove Patterns each contains S (5), M (6), L (7), XL (8). For exact sizes enlarge or reduce on copier using the **Proportionate Scale**. To determine your size use the **Glove Tape**.

Glove Patterns - \$10.00
 Proportionate Scale - \$4.95
 Glove Tape - \$4.95



EIGHTEENTH CENTURY PATTERNS

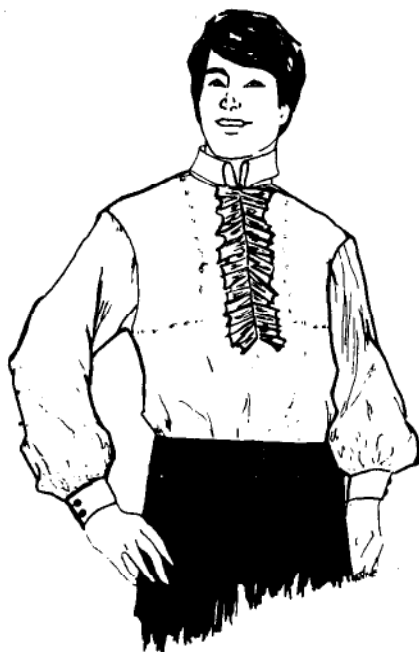
Illustrated at left, see page (8)

For Men, Women and Children - Clothing patterns of the Fur Trade Era, 1730's through the last rendezvous, showing the early French and British influence on clothing.

These patterns have not been available for a long time. They were found warehoused in California where they have been through two earthquakes! Some have frayed edges, and some are yellowed, but the patterns are completely usable. A final inventory count is not available as we go to press. A few patterns may be out of print, but will be re-printed. All sizes listed are included in each multi-size pattern. All patterns are \$14.50 each.

#	NAME	SIZE	#	NAME	SIZE
1	18th Century Gown	S-L (6-18)	18	Little Girls Dress	S-L (4-14)
2	Waistcoat	42-50	19	Ladies High Waisted	S-L (6-18)
3	Mens Riding Coat	42-50	20	Tucker and Spencer	S-L (8-18)
4	Womens Riding Coat	S-L (6-18)	21	Capote	40-48
5	Revolutionary War Vest	42-50	22	Early Hunting Coat	42-50
6	Rev. Military Coat O.P. SEE COAT P. 10	42-50	23	Country Womens Costume	S-L (8-18)
7	Boys Pants	S-L (4-14)	24	Indian Women Strap Dress	10-20
8	Boys Shirt	S-L (4-14)	25	Indian Women Side-Seam	10-20
9	Voyager Cap	\$1.00	26	Indian Women Two-Skin	10-20
10	Drop Sleeve Shirt	38-44	27	Tail Coat	42-50
11	Mil. Overalls-buckskin	30-39	28	Zuni Dress	8-18
12	High Waisted Breeches	30-39	29	Womens S.W. Costume	8-18
14	Children's Capote	S-L (4-14)	30	Mens Spanish Coat	42-50
15	Fringed Leather Shirt	34-48	31	Mens Button Front Pants	30-38
16	Fringed Hunting Shirt O.P. SEE PM/92 P. 14	38-44	32	Trade Cloth Dress	10-20
17	Early American Shirt	S-XL			

Amazon Drygoods
 1 (800) 798-7979
 411 Brady Street
 Davenport, IA 52801-1518



Mens and Boys Breeches out of print.
see page 13, 14, 69, 71, 73 & 105.



All patterns this page \$21.95

PEG 4

PATTERN MEN'S And BOY'S SHIRT 1776

Men's—One Size Fits All

Boys'—Use Regular Shirt Size
Sizes: 8 - 10 - 14 - 18 - 20

All Sizes Printed in Each Pattern

©1972 BY PEGGY A. MILLER *peggy*®

PEG 6

PATTERN MEN'S And BOY'S WAISTCOAT 1776

Men's	Small	Medium	Large	X-Large
Chest	34-36	38-40	42-44	46-48
Waist	28-30	32-34	36-39	42-44
Hip	35-37	39-41	43-45	47-49

Boys' Sizes: 8 - 10 - 14 - 18 - 20

All Sizes Printed in Each Pattern



PEG 7

PATTERN MEN'S MILITARY COAT 1776 (OR CIVILIAN COAT)

Men's	Small	Medium	Large	X-Large
Chest	34-36	38-40	42-44	46-48
Waist	28-30	32-34	36-39	42-44
Hip	35-37	39-41	43-45	47-49

All Sizes Printed in Each Pattern



Amazon Drygoods
1 (800) 798-7979
411 Brady Street
Davenport, IA 52801-1518

PEG 1

PATTERN LADIES' DRESS 1776

Body Measurements				
Size	10	12	14	16
Bust	32 1/4	34	36	38
Waist	24	25 1/2	27	29
Hip	34 1/2	36	38	40
Back Waist Length	16 1/4	16 1/2	16 3/4	17
Size	18	20		
Bust	40	42		
Waist	32	34		
Hip	42	44		
Back Waist Length	17	17 1/2		

All Sizes Printed in Each Pattern

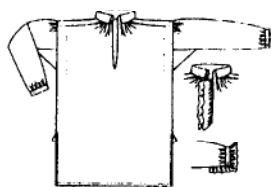


PEG 2

PATTERN GIRLS' DRESS 1776

Girls' Size Chart	
Size	7
Bust	26
Waist	23
Hip	27
Back Waist Length	11 1/2
Approximate Height	50
Yardage 45"	5 1/2 yds.
Size	10
Bust	28 1/2
Waist	24 1/2
Hip	30
Back Waist Length	12
Approximate Height	56
Yardage 45"	6 1/2 yds.

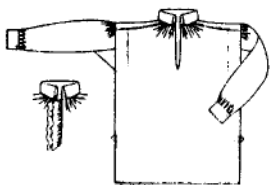
All Sizes Printed in Each Pattern



Man's Shirt
1750-1800
English Style

Based on original cutting instructions, with construction techniques from various original shirts. Directions for bosom and sleeve ruffles included. Includes sizes from XS to XXXL.

Pattern KK-4101
\$12.00



Man's Shirt
1790-1830
English Style

Based on original 1808 cutting instructions, with construction techniques from various original shirts. Directions for bosom ruffles included. Includes sizes from XS to XXXL.

Pattern KK-4102
\$12.00



Man's Double-Breasted Short Jacket
1770-1800

A full size pattern of a general purpose working man's jacket. Based on contemporary illustrations as well as an in-depth study of original garments, this jacket features a full lining, welted pocket, a neck edging detail, as well as three sleeve variations. Worn by farmers, laborers, apprentices, seafarers, sportsmen and others, this jacket is sure to find a place in your wardrobe! Suggestions are made for altering to fit the "mature" male figure. Includes sizes 38-40-42-44-46-48-50

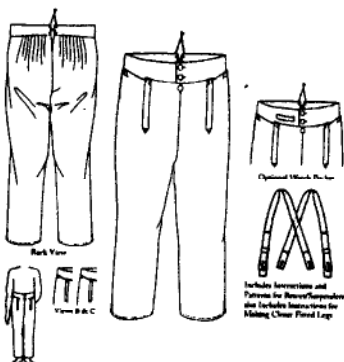
Pattern KK-4551
\$18.50



Man's Outer Breeches "Slops"
1750-1820

A protective garment used by sailors, fishermen, farmers and field workers. Based on original garments and contemporary illustrations. Side pocket slits to reach breeches pockets. View A has optional watch pocket or watch pocket access flap (to reach breeches watch pocket). Center front opening without fly buttons. Laced vent in back of waistband. Includes waist sizes 32 through 52.

Pattern KK-4304
\$15.50



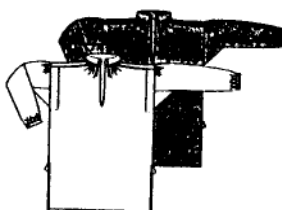
Man's Trousers High-Waisted
1790-1810

Fall front straight trousers pattern for common working men and some fashionable men. Designed for the waistband to be worn just above natural waist (i.e. above hip bones). It includes directions for making closer fitted legs, and fitting information for "mature figures" with bellies!

Three variations of fall binders included: pointed (shown), rounded or square (not shown). Optional watch pocket in waistband. Vents at ankles.

Includes pattern and directions for making "Braces" (suspenders), which help to keep the trousers at the higher fashionable waistline!

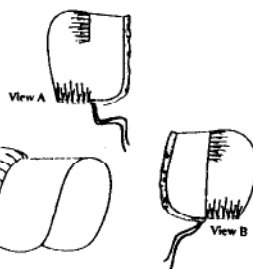
Waist size groups 28-42 or 42-52.
Comes in 2 sizes please State Size.
Pattern KK-4303
\$15.50



Boy's Shirt and Work Shirt
Second Half of the 18th Century
English Style

Based on original cutting instructions, with construction techniques from various original shirts. Directions for bosom and sleeve ruffles included. Includes shirt sizes 4 to 14, work shirt sizes 6 to 14.

Pattern KK-8101
\$14.50



Girl's Caps & Bonnet

Fourth Quarter of the 18th Century Working Class English Style Headwear

Caps and bonnet based on original cutting instructions, with construction techniques from various originals. View A cap is for small girls. View B cap is in two sizes for older girls. The bonnet is in two sizes. All sizes are original. Instructions for determining which size to use are included. See Woman's bonnet pattern information.

Pattern KK-8601
\$12.50



Girl's Short Cloak
Second Half of the 18th Century

A comfortable, functional, working cloak. Just right for cool days and chilly nights! Based on original cutting directions, with construction techniques from several extant garments. Includes sizes 4, 7, 10.

Pattern KK-8901
\$14.50



Woman's Short Cloak
Second Half of the 18th Century

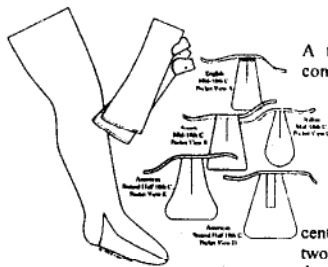
A comfortable, functional, working cloak. Just right for cool days and chilly nights! Based on original cutting directions, with construction techniques from several extant garments.

Includes sizes S-M-L-XL-XXL.

Pattern KK-6901
\$14.50

18th Century Patterns

Amazon Drygoods
1 (800) 798-7979
411 Brady Street
Davenport, IA 52801-1518

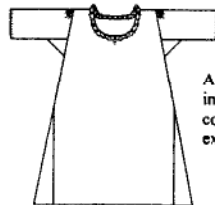


Stockings, Pockets & Mitts

A full scale, multi-sized pattern for constructed stockings for men or women, with instructions for custom fitting. Can be made of knitted cloth, or of linen cut on the bias. These stockings are appropriate for 17th, 18th and early 19th century. Five pocket styles, including three mid-18th century (English, Scotch, Italian) and two second half 18th century from America. Also includes a pattern for women's common linen mitts, cut on the bias (one size).

Includes stocking sizes:
S-M-L-XL-2X-3X.

Pattern KK-6001
\$12.50



Woman's Shift Second Half of the 18th Century English Style Shift (Chemise)

A full size pattern with stitching instructions, including whip gathered ruffle. This pattern is a composite of similar characteristics found in three extant garments, plus additional documentation.

Includes sizes S-M-L-XL-XXL.

Pattern KK-6102 - \$14.50



Woman's Shift 1790-1820 English Style Shift (Chemise)

The shift pattern for your Empire and Federal style gowns! A full size pattern with stitching techniques, based on period cutting instructions and extant garments. Scooped, drawstring neckline, gathered or plain short sleeves.

Includes sizes XS-S-M-L-XL-2X-3X.

Pattern KK-6103 - \$12.00



Patterns

All patterns are full scale, printed on pattern tissue, and include documentation, stitching techniques, and complete construction information with illustrations.

Woman's Bedgown

"Manteau de lit" - 1730-1770

A full scale pattern, based on the text and illustrations in *Description des Arts et Mètièrs. Art du Tailleur*, by M. de Garsault, 1769. Commonly worn by working class women as day wear. Sleeve style is "en pagoda". Upper body and sleeves are lined. Several variations of sleeves and body are discussed. Construction based on the original text, common techniques of the period, as well as research on bedgowns.

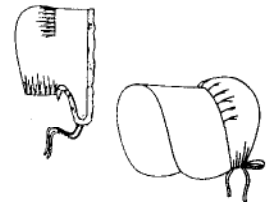
Original French text and English translation are included.

Includes sizes:
XS-S-M-L-XL-2X-3X.

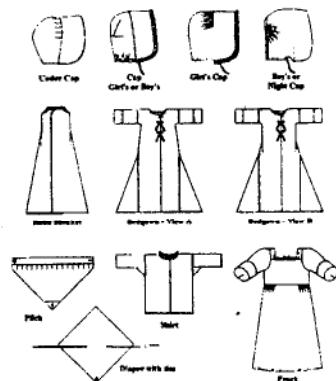
Pattern KK-6501
\$18.50

Woman's Cap & Bonnet Fourth Quarter of the 18th Century Working Class English Style Headwear

Cap and bonnet based on original cutting instructions, with construction techniques from various originals. The cap, and similar bonnet, can be documented earlier than the fourth quarter. Variations of this bonnet, used by women of many social classes and religions, are found in prints and paintings, some of Quakers, who continued to use plain bonnets well into the 19th century. Sizes include the original cap plus two additional sizes, and the original bonnet plus a smaller graded version.



Pattern KK-6601
\$12.50



Infant's Clothing Second Half of the 18th Century

Based on original cutting instructions, with construction techniques from original garments and references. Includes Shift, Bedgown, Robe Blanket, Frock, Cap & Under Cap, Girl's Cap, Boy's or Night Cap. Also includes directions for Diapers, Rollers, Squares of Flannel and suggestions for Patches/Diaper Covers. A brief history of infant's clothing included. Everything needed to get a new reanactor started! These are "long clothes", intended for infants not yet walking, but sizes included are Original (approx. Newborn), 6, 12 and 18 months. Tucks can be taken to shorten for children learning to walk.

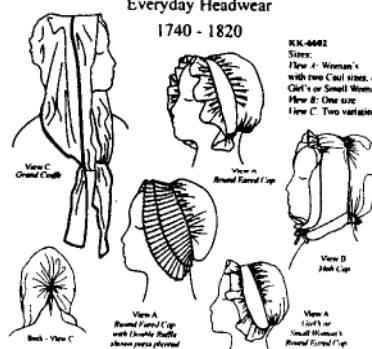


Pattern KK-9901
\$18.50

Woman's and Girl's Caps

Everyday Headwear

1740 - 1820



View A: Round Eared Cap has several variations, including single or double ruffles, and ruffles that are continuous and un-split at top center of the forehead, or that are split at that point. There are also two sizes of caul (back piece) for the woman's size, which can accommodate different head sizes and hairstyles, and a Girl's or Small Woman's size. The caul neckline has a narrow drawstring. c. 1740-1810.

View B: Mob Cap is quite adjustable, and is given only in the size of the original caps. The top of the headpiece (front piece) has two delicate drawstrings, and the caul neckline has a narrow drawstring. c. 1740-1820. Worn especially by older women during the early 1800s.

View C: Grand Coiffe is a sheer cotton muslin head covering frequently worn over another cap, such as the round eared cap, sometimes over a hat, and is also worn for the head (inside home) without a cap. It can have a very narrow lace trim on the hem. The back of the head has a delicate drawstring, which draws up the triangular cut of the coiffe into a nicely fitting shape. c. 1730-1790.

Pattern KK-6602 \$14.50

Man's Accessories Common Items used by Men of all Classes c. 1740 - 1830



Includes full scale patterns and directions for:

Neck Stock*, three views for various buckle styles, neck sizes 13 1/2 - 19 1/2;
Apron, basic pattern with waistcoat button-hole and ties, S-M-L-XL;
Mittens*, cloth, leather or fur, sizes XS - 4XL;
Hood, cloth, with button face flaps, flares onto shoulders, in 1/4 hat sizes 6 to 8 3/4;
Neck Night Cap, one size;
Folded Pocketbook, two or four section styles, with needlework patterns;
Tied Pocketbook, with scalloped flap, in one or two section styles;
and directions for making a **Wristlet**, a bag used to carry goods and belongings over the shoulder (not illustrated on cover).

* inspired from *Diderot and Garsault Encyclopédias*

Pattern KK-4001 - \$14.50

Amazon Drygoods
1 (800) 798-7979
411 Brady Street
Davenport, IA 52801-1518



**Woman's 18th Century
Jumps or Leather Stays**
Front and/or back laced lightly boned
undergarment. A garment that is
perfect for work, undress or that first
set of stays.
One size per pattern. Size 8 to 18
MF1 \$12.00



Woman's Juste-au-corps
Fitted bodice with a set-in sleeve.
Simple to construct with many
variations. Also gives directions for
quilted under-waistcoat.
One size per pattern. Size 8 to 18
MF2 \$12.00



Woman's Caps
New! 1 Cap styles
spanning the 18th century. One size
fits all.
MF3 \$19.75



Man's Great Coat
Double breasted outerwear with
choice of collars and shoulder cape
options. One size fits to chest size 44.
MF4 \$12.00



Boy's Waistcoat circa 1770 & Shirt
A miniature version of the man's
waistcoat. Includes pattern for
waistcoat and cutting diagrams for
shirt. Two sizes per pattern
Chest size 23/24, 25/26 or 27/28
MF5 \$12.00



Man's Waistcoat circa 1770 & Shirt
Typical waistcoat for the 2nd half of
the 18th century. Includes dressy
option. Two sizes per pattern.
Chest size 34/36, 38/40 or 42/44
MF6 \$14.00



Boy's Drop Front Breeches
Miniature version of the man's
breeches. Two sizes per pattern
Waist size 20/21, 22/23 or 24/25
MF7 \$12.00



Man's Drop Front Breeches
Common or dress breeches with an
option for workingman's overalls.
Two sizes per pattern.
Waist size 28/30, 32/34 or 36/38
MF8 \$14.00



Child and Girl's Gown & Shift
Back facing fitted gown pattern with
cutting diagram for shift. Two sizes
per pattern.
Size 2/3, 4/5, 6/7, 8/9 or 10/11
MF9 \$12.00



Woman's Mitts & Flouncers
Elbow length fingerless mitts with
pattern for embroidery for dress mitt.
Includes two different designs for
white work embroidered, single or
double flouncers. All sizes, S/M/L in
one package
MF10 \$11.00



**Shortgown with Shift & Petticoat
Directions**
Basic American working class
garment. Pattern for shortgown
features pleated back. Includes
diagrams and directions for shift and
petticoat. All sizes 12 through 18 in
one package.
MF11 \$12.00



Pockets and Pinner Apron
Pattern for bibbed or half apron.
Pattern for plain pocket as well as two
embroidered pockets. One size fits
all.
MF12 \$12.00



**Woman's Gown,
A Robe Polonoise**
Simple day dress fashionable circa
1770-85. Can be fully trimmed for
evening wear. Includes directions for
petticoat and hip pads. One size per
pattern. Size 8 to 18.
MF13 \$15.00



Woman's Casaque 1720-50
With directions for Robe Battante.
Fashionable jacket in the first half of
the 18th century. Features the larger
sleeve and deep cuff. Often worn in
un-dress. Perfect for maternity wear.
One size fits all.
MF14 \$17.00



**Woman's Riding Habit Jacket and
Waistcoat with petticoat directions**
Tailored jacket with separate waistcoat
popular for riding and traveling.
Two sizes per pattern, 8/10, 12/14 or
16/18.
MF15 \$17.00



**Robe 'A la Francaise or
Robe 'A l' Anglaise**
Day Dress or Ball Gown circa 1730-
1780. Stomacher and robings front
with sack back or fitted back. Cuff
and flounce options. Two sizes per
pattern, 8/10, 12/14 or 16/18.
MF16 \$17.00



Woman's Caraco
Fashionable Jacket circa 1770-90.
Includes long or short version. One
size presently. 12/14
MF17 \$14.00



Man's Banyan and Cap
Worn by men at home as loungewear
and at times, in public as un-dress.
Chest sizes 34 to 44 in one package.
MF18 \$12.00



Man's Frock Coat
Day Coat or Dress Coat circa 1770-85
Collar and pocket style variations.
One size presently. Chest 40/42
MF19 \$19.75



**Infant Gown with Shirt & Petticoat
directions**
Worn by infants through out the 18th
century, this gown can be made fine
for special occasions such as
christening or made for everyday wear.
Includes shirt diagrams and shift and
petticoat directions.
One size fits 3-9 months
MF20 \$12.00



European Bedgown
Loose unfitted garment with a "V"
style neckline. Good maternity wear.
All sizes 12 to 18 in one package.
MF21 \$12.00



Woman's Long or Short Cloak
Long or short length with collar,
small or large hood. Cutting diagram
and directions only (not a full size
pattern). One size fits all.
MF22 \$5.00



Woman's Knitted Stockings
Knitting instructions for basic 18th to
mid 19th century stockings.
Adjustable sizing.
MF23 \$5.00



18th Century Fashion Doll
With patterns for a complete outfit
Includes full scale carving diagrams for
carving this painted beauty. Comes
with full scale patterns for a complete
outfit as well. Finished doll will
measure approximately 12 inches.
MF24 \$7.00



Boy's Frock Coat

Day coat or dress coat circa 1770-85.
Designed to go with the boy's
breeches, waistcoat and shirt, this will
complete your young man's outfit!
Two sizes per pattern.
Chest size 23/24, 25/26, 27/28 or
29/30
MF25 \$19.75



		Sizing Charts							
		Women							
		8	10	12	14	16	18		
Chest	32 1/2	34	36	38	40	42			
Waist	25	26 1/2	28	30	32	34			
Hip	34 1/2	36	38	40	42	44			

		Men			
		34/36	38/40	42/44	
Chest	28/30	32/34	36/38		

		Girl									
		2	3	4	5	6	7	8	9	10	11
Chest	21	22	23	24	25	26	27	28	29	30	
Waist	20	20 1/2	21	21 1/2	22	23	23 1/2	24	24 1/2	25	
Hip	20	21	22	23	24	25	26	27	28	29	30
Back to Waist	8 1/2	9	9 1/2	10	10 1/2	11	11 1/2	12	12 1/2	13	
Height	35	38	41	44	47	49 1/2	52	54	56	58	

		Boy			
		4/5	6/7	8/9	10/11
Chest	23/24	25/26	27/28	29/30	
Waist	20/21	22/23	24/25	26/27	
Hip	24/25	26/27	28/29	30/31	
Back to Waist	9/10	10/11 1/2	11 1/2/12 1/2	12 1/2/13 1/2	
Height	40/43	45/48	48/52	52/56	

EAGLE'S VIEW

QUALITY PATTERNS

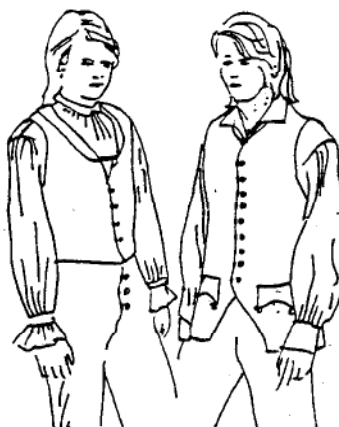
All of the PATTERNS are completely "sized-out" so there is no guessing required in making garments of various sizes: even intermediate sizes are easy.

All are complete and even the moccasin patterns are true PATTERNS that are simple to follow and not just instruction sheets; two simple measurements and you can make either hard or soft sole moccasins like an expert!

Each PATTERN comes with an attractive two-color cover that pictures the garment, states the sizes and material requirements, pictures variations and/or back views and tells something about the clothing history and uses.

They feature complete, easy-to-follow instructions that are clear, concise and illustrated. Hints on sewing with leather and fur have been included in appropriate patterns and all of the terms used are defined so that anyone from the novice to the experienced seamstress will be comfortable using them.

ALL PATTERNS ARE MULTI-SIZED
EACH PATTERN \$10.95 + SHIPPING



PM/68 - WAISTCOAT
AND VEST

Finally one of the Patterns you have been demanding from Eagle's View® for the past year! The quality and detail of the Man's Waistcoat and Vest Pattern should prove worth the wait.

The 18th-century Waistcoat was styled with a high neck and many buttons down the front and was widely worn by both civilians, para-military outfits and the established military. Made of fine wool broadcloth or linen and lined with fine linen or cotton, the waistcoat comes nine to ten inches below the waist.

This pattern also has a later (18th-19th century) styled waist length Vest with a V-neck and small collar variation. Made out of broadcloth or fine cotton it is reminiscent of the Mississippi River-boat Gambler, if constructed from rougher material, it is the style commonly worn for everyday wear. Many men wore Vests when they entered the fur trade and continued to wear them during their sojourn in the hills.



PM/61 - EARLY DROP SLEEVE
SHIRT

This cloth shirt was standard apparel in the late 18th and early 19th centuries. Made of calico, muslin, linen or wool, the style endured long after fashion dictated change. Roomy and comfortable for work or play, the practicality of the design is apparent.

The Early Drop Sleeve Shirt is styled without a yoke. There is a short stand-up collar variation included with the pattern along with your choice of tucks or gathers for fullness. It may be decorated with ribbons to make an unusually striking shirt for pow-wows and dances.

Included is a complete glossary of terms so that anyone from the novice to the experienced seamstress will be comfortable using the patterns and this fine shirt may be made in sizes Small (36) through XX-Large (50).



PM/63 - FRONTIERSMAN'S
SHIRT

This pattern is taken directly from an old original shirt in a private collection. It is a mid to late 1800s style with fringe and tailoring reminiscent of the early reservation days. Jeremiah Johnson and Buffalo Bill Cody. With the optional pockets, hidden by the front fringe, it is sure to be a favorite at rendezvous and pow wows.

The Frontiersman's Shirt has a two piece tailored collar and cuffs lined with calico. The front opening has a pocket and hangings, and the shirt may be made with or without the fringe. It may be decorated with beadwork, quillwork or other western ornamentation.

Included is an extensive section on "Working with Leather" and a complete glossary of terms used in the pattern. The pattern comes in sizes Small (36) through XX-Large (50).

As with all of our patterns, the explicit instructions make it easy for anyone to complete this most attractive shirt.

PM/62 - EARLY
FRONTIERSMAN'S
SHIRT

This leather shirt depicts the style worn in the early 19th century by fur trappers and Indians alike. The shirt is slightly tailored but has the freedom of no sleeve cuffs or button closings.

The Early Frontiersman's Shirt has a false yoke when front and back fringe is added. Other options are sleeve fringe and a collar.

Included is a section of "Working with Leather" and a complete glossary of terms used. May be made in sizes Small (36) through XX-Large (50).



PM/64 - AUTHENTIC
AMERICAN
SHIRT

This square cut Authentic American Shirt was commonly made and worn for the first two hundred years of our country's history. By changing fabric and detail this shirt can go from a coarse workman's or woodsman's everyday shirt to a fancy evening accessory. Many mountain men wore this shirt with ruffles when they first entered the fur trade and frequently had their initials embroidered on a cuff.

Gathers for fullness and gussets under the arms give this shirt added comfort and options include an ascot tie, ruffled stock and ruffled insert. Four extra inches may be added to the length for winter warmth.

The pattern includes sizes Small (36) through size XX-Large (50).

PM/52 GLOVES, GAUNTLETS, MITTENS
PM/53 COWBOY DUSTER 36 - 50
PM/54 WESTERN BIB SHIRT 36 - 50



PM/92 - CAPED
WOODSMAN'S FROCK

The Caped Woodsmen's Frock is a style worn for more than 150 years of our early history. The coat was worn by men who joined Roger's Rangers in the French & Indian Wars, by Washington's troops at Valley Forge and by Brisbane's Regiment of the South Carolina Militia in the 1836 Seminole War.

Options for this wrap-style Frock include square and round edges at the bottom and cape, gathered or tapered sleeves and a choice of leather or fabric. Colors usually varied from unbleached homespun to earthy camouflage green, grey and black.

Comes in sizes 36 through 50.

NEW!



PM/73 - BROADFALL DROP
FRONT BREECHES
AND PANTS

Breeches were worn by both military and civilians in the 1700s and early 1800s. Usually made of broadcloth or linen they were also worn in leather and were buttoned or buckled just below the knees or tied with a draw string. In the fur trade the legs were extended but pants kept the drop front, the full gathered seat and the gussets in the back of the waistband.

Variations are given in the pattern for knee closing and leg length and it comes in waist sizes 30 through 42.

The pattern is easy to use and comes complete with a glossary of terms and a section on "Working with Leather" so that almost anyone will be comfortable using these patterns.



PM/70 - EARLY
FRONTIERSMAN'S LEATHER
PANTS

The Early Frontiersman's Leather Pants are styled with a button front and fared legs and are typical of those worn in the 1800s. When teamed with Eagle's View's Early Frontiersman's Shirt (PM/62) Pattern they make up the core of typical mountain man clothing.

This pattern includes an option for front pockets, leg fringe and belt loops and may, therefore, be made to meet your specific requirements.

Included is a section on "Working with Leather" and a complete glossary of terms used. Pattern includes waist sizes 30 through 42.

Amazon Drygoods
1 (800) 798-7979
411 Brady Street
Davenport, IA 52801-1518

PM/71 - LEGGINGS AND BREECHCLOUT

Indians and mountain men wore leggings and breechclout for protection against the elements and they were first made of leather and later of cloth or wool blankets. These articles of clothing were frequently decorated by Indians with distinctive Tribal designs and styles.

Included is a Tapered Leather Legging with fringe options, a Full Leather Legging, and a Full Cloth Legging with options of sewn or tied seams.

There are suggestions for sources on decorations and variations and the pattern includes sizes Small (30), Medium (34), and Large (38); intermediate sizes may also be made.



PM/60 - INDIAN WAR SHIRT

May be made in either the natural "open" style with the legs and tail of the hide attached or a more fitted style. The length may be varied to suit preferences, tribal influence or the size of available hides.

The Indian War Shirt was worn either plain or decorated and honors and coup were often seen on the shirt. Paint, feathers, ermine tails, scalp locks, beadwork, quillwork, claw claws, shells, bells, coins, fur trim and/or trade cloth are some of the many items used to decorate the War Shirt. Sources for ideas on decorations and variations are listed inside the pattern.

Included is a section on "Working with Leather" and a complete glossary of all of the terms used in the pattern. All sizes are included from Small (36) through XX-Large (50).



PM/98 - LONGHUNTER'S LEATHER ACCESSORIES

The leather items in this pattern were all used by Rogers Rangers, other para-military personnel and by the woodsmen and longhunters of what was to become the Eastern United States.

Included is a Shooting Pouch, Haversack-Knapsack, Bayonet & Tomahawk Belt Carriage, Eastern style Leggings and Leather Garters. When worn with the Authentic American Shirt (PM/64), Drop Front Breeches (PM/73) and the Caped Woodsman's Tunic (PM/92) you have a truly beautiful and authentic costume.

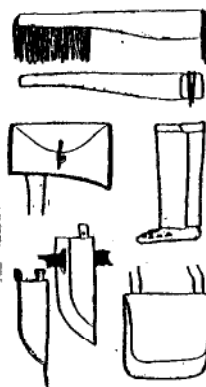


PM/90 - BLANKET CAPOTE

The fur traders made extensive use of the Blanket Capote and this apparel, with bright color and contrasting stripes, was quickly adopted by the Indians of North America. These coats were popular along the western moving frontier and were later used by soldiers and frontiersmen. They have become both popular and fashionable for today's men, women and children.

This pattern is for the traditional mid-calf length and has variations in hood tassels and fringe.

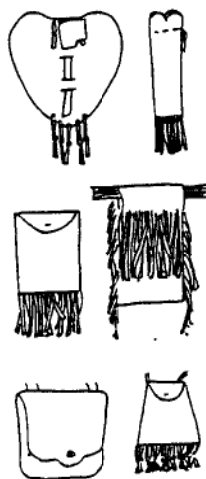
This pattern is for adults (men's sizes 30 through 50 and women's sizes 8 through 20) and PM/91 (below) is made especially for children.



PM/97 - FRONTIERSMAN'S LEATHER ACCOUTREMENTS

All of the leather items in this pattern were used by fur traders and Indians during the 18th and 19th century and included in the package are two Rifle Scabbards, a Hawk Sheath, Hat Leggings, Knife Sheath, Knife Scabbard and a Shooting Bag Pattern.

These items may, of course, be adorned with beads, paint, quills, etc. and many times the decorations that were displayed on them were used to show status or clan and ornament varied from Tribe to Tribe. There is a section of sources for decorations and variations.



PM/95 - FRONTIER LEATHER ACCESSORIES

All of the custom leather items in this pattern were used by Indians and Fur Traders; many were adopted for use from the more eastern Longhunters. Included are instructions and patterns for a Belt Pouch, Gage d'More Bag, Pipe Bag, Possible Pouch, Small Pouch and a Strike-a-Lite Pouch. Many times the decorations on these items were used to show status or clan and tribal differences. This single pattern will provide hours of enjoyment for the craftsman.

The pattern is very easy to use and included is a section on "Working with Leather" and a complete glossary of terms so that anyone will be comfortable when making these items.

As with all of Eagle's View Patterns there is a list of sources for decorations and variations.

PM/75 - PLAINS INDIAN DRESS

This three piece dress is typical of the Plains Indian Dress worn by the women of many Tribes. It may be decorated with beadwork, quillwork, shells, coins, fur, fringing, ribbon, metal cones and/or trade cloth; for everyday use. It was worn without adornment.

Included are instructions for a "Natural Style" that has the legs and natural edges intact (as shown on the front cover of the pattern - left) and a "Tailored Style" with long sleeve fringe and cut edges.

The pattern features an extensive section on "Working with Leather" and a complete glossary of all of the terms used. Sizes available from the pattern are 8 through 20.



PM/76 - PLAINS INDIAN CLOTH DRESS

Cloth dresses came to the Plains Indian women with the westward movement of the fur trade. Light calicos were very popular for everyday use, red and blue trade cloth (broadcloth) was used for "best dress," and today this dress with ribbons on it is commonly seen of rendezvous and pow-wows.

Using this pattern, you can create the calico Plains Indian Cloth Dress, the now classic "Ribbon Dress" and the Traditional Trade Cloth Dress.

Included in the pattern (Sizes 8 thru 20) are options for three different neckline styles and two distinct sleeve variations. Also shown are complete directions for lining the dress.

Instructions are enclosed for making the ribbon dress and, also, the trade cloth dress is easily made from this fine pattern.

The flexibility of this pattern and the ease with which it is completed has made the Plains Indian Cloth Dress one of our most popular patterns.



PM/80 - PLAINS INDIAN MOCCASINS

The Two Piece Moccasin was basic to the Indians of the Plains as well as to many other areas of North America and each Tribe had variations in shape and style. Some of the differences were in the shape of the tongue and sole, fringe and in decorations. The pattern includes many sources for ideas on style and decorations of the finished moccasins.

The most common adornment on moccasins was done with paint, porcupine quills and seed beads. Some Tribes also used fringe and other decorations.

Using this pattern, with just a few simple measurements, you can create either Soft or Hard Sole Plains Indian Moccasins and tongue variations.

This great pattern includes instructions for men's sizes 7 through 12 and women's sizes 5 through 10.

This is not an instructions sheet, but an actual pattern that has allowed thousands of ordinary people to make their own moccasins and it is one that you will really appreciate.



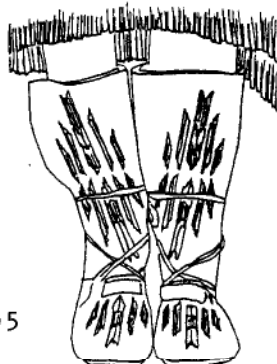
PM/81 - PLAINS INDIAN HIGHTOP MOCCASINS

The Two Piece Hightop Moccasins were traditional to the Plains, Marsh and Woodland Indians of North America. For everyday wear they were worn without decoration, but for ceremonial and best dress they were often highly decorated with paint, porcupine quills, seed beads and other materials. Tribal distinctions were often shown by the type and design of the adornment on the moccasins.

Within a few weeks of entering the fur trade, the clothing of the traders would wear out and most often they quickly adopted the dress and many of the customs of the Indian. Probably the first item of apparel the new "pilgrims" purchased or made was a pair of moccasins.

Using this pattern you can create either Soft or Hard Sole Hightop Moccasins and there is a section on "Working with Leather" that is extremely helpful to the new craftsman.

This pattern includes men's sizes 7 through 12 and women's sizes 5 through 10.



EACH PATTERN \$10.95

New!

PM/88 VOYAGUER SHIRT

PM/89 MOUNTAIN MAN WORK SHIRT

PM/94 RUFFLED RIBBON SHIRT

(all are much like PM/61 Early Drop Sleeve Shirt but have different trim)

Amazon Drygoods
1 (800) 798-7979
411 Brady Street
Davenport, IA 52801-1518

PM/72 - BOY'S LEGGINGS AND BREECHCLOUT

Available in Boy's Sizes Small (4-6), Medium (8-10) and Large (12-14); this pattern is similar to our PM/71 that is made for older folks.

Indians and Mountain Men wore leggings and breechclout for protection against the elements and they were first made of leather and later of cloth and wool blankets. Often they were decorated in distinctive Tribal designs and styles.

The patterns include options for Tapered Leather Legging's with fringe options, a Full Cloth Legging with tied side seams and Full Leather Leggings as well as the fine breechclouts.



PM/82 - CHILD'S MOCCASINS

Here is a pattern for children that combines our exclusive PM/80 and PM/81 to provide one pattern with instructions for making both regular and hightop moccasins with either hard or soft soles. The sizes are child's 4 through 13 and teen's 1 through 6.

Patterns are given for full sizes and if the child wears a size 2 1/2 (for example), you simply use the next smallest full size (size 2, in this example) as the leather will stretch and that will fit best.

Using the Child's Indian Moccasin Pattern you can create really fine footwear that will be worn with pride.



PM/67 - BOY'S AUTHENTIC AMERICAN SHIRT

The Boy's Authentic American Shirt is patterned after our Authentic American Shirt (PM/64) in our adult line. This shirt is designed for boys and may be made in coarse linen, wool or cotton for a woodsman's or workingman's look, or in fine linen or cotton for "city" or "Sunday best."

The Pattern features square cut shoulders, gussets under the arms and tucks for fullness that were characteristic of shirts worn in the first 200 years of our country's history.

This basic American Shirt has a ruffled cuff and besides the plain collar has three necktie options which may be worn with the basic shirt. An ascot tie, ruffled stock and ruffled insert can make this Shirt Pattern cover several time periods and locales.

PM/65 - BOY'S INDIAN WAR SHIRT

This pattern is similar to PM/60 but is made for boy's sizes 4 through 14 and may be made in either the natural "open" style with legs and tail of the hide attached, or a more tailored style. The length may be varied to suit Tribal influence or the size of available hides; there is an option for a neck flap also given.

The Boy's Indian War Shirt may be worn either plain or decorated and the pattern includes a number of references for traditional adornment.

Included, of course, is a section on "Working with Leather" and a complete glossary of the terms used.



PM/78 - GIRL'S INDIAN CLOTH DRESS

The Indian Cloth Dress came to Tribal girls with the westward movement of the fur trade and this is similar to our PM/76 but is made for girls in sizes 4 through 12.

Lightweight calicos are very popular for everyday use, red or blue trade cloth is beautiful for "best dress" and you may add ribbons to the basic pattern in order to create the now classic "Ribbon Dress" seen at pow-wows and many rendezvous.

Variations included with the pattern are neck style, sleeve options and length. Also, complete instructions are given for lining the dress.

You'll love this easy pattern and any girl will wear the finished dress with pride!



PM/74 - BOY'S FRONTIER LEATHER PANTS

This pattern is similar to PM/70, but comes in Boy's Sizes 4 through 14. It is styled with a button front and slightly flared legs typical of pants worn in the 1800s. When teamed with our Boy's Drop Sleeve Shirt (PM/66), you have the core of the typical boy's period clothing.

Included are options for leg fringe and belt loops, and therefore, you may make them to meet the child's special needs.

Of course, we include a section on "Working with Leather" and a complete glossary of terms used in the directions so that you will be comfortable using the pattern.



PM/51 - CLASSIC FUR HAT

A fine addition to any traditional outfit, but is also attractive with a lot of contemporary clothing. Two styles are featured in this pattern in sizes 6 5/8 through 7 5/8.



PM/77 - GIRL'S INDIAN LEATHER DRESS

This is our Girl's version of PM/75 for the Indian Leather Dress and is available for sizes 4 through 12. It is a three hide dress style that was typical of the kind worn by Indian girls of many Tribes.

The dress was often highly decorated for special occasions but was worn without adornment for everyday use. We include instructions for a Natural Style which uses the legs, intact edges and side fringe, and a Tailored Style with long sleeve fringe and straight cut edges.

The pattern features all of the extras that make using Eagle's View Patterns so easy and understandable.

PM/66 - BOY'S DROP SLEEVE SHIRT

In boy's sizes 4 through 14, this pattern is similar to our PM/61 and was standard apparel in the eighteenth and early nineteenth centuries in North America. It may be made of calico, muslin, linen or wool and is roomy and comfortable for work and play.

This pattern is the early period style Drop Sleeve Shirt without a yoke. There is a short stand-up collar variation included along with your choice of tucks or patterns for fullness. It may also be decorated with ribbons to make an unusually striking shirt for traditional affairs.

A complete glossary of terms is given so that anyone will be comfortable using these fine patterns.



PM/50 - FRONTIER FUR HAT

A great pattern for making a mountain man's hat from the fur of a coyote, wolf, bobcat or similar animal pelt. Available in sizes 6 5/8 through sizes 7 5/8.

PM/91 - CHILD'S BLANKET CAPOTE

This pattern is similar to our PM/90 (above), but is designed especially for children in Sizes Small (4-6), Medium (8-10) and Large (12-14) and may be made from almost any blanket or other material.

Made in the traditional mid-calf length, the Child's Blanket Capote pattern includes variations in hood tassels and fringe.

While this is a very loose fitting garment, all intermediate sizes are easily made with the instructions and, of course, there is a complete glossary of terms used so that almost anyone will find it easy to use the pattern.



EACH PATTERN \$10.95

Amazon Drygoods
1 (800) 798-7979
411 Brady Street
Davenport, IA 52801-1518

PM/58 - WOMAN'S BODICE



This Pattern features easy-to-follow instructions for making this traditionally correct Woman's Bodice and the glossary of terms allows almost anyone to be comfortable using it.

The Woman's Bodice or Vest was worn over the chemise. The Bodice is styled similar to a corset and if made of heavy firm wool, lined and tied snugly, gives much the same effect. Fabrics can match the skirt, be of similar weight, but a contrasting color, or of a stripe or calico in a lighter weight fabric.

This fine Pattern offers a hip length or a waist length bodice with a pointed front variation so that it may be tailored to individual desires or needs. The bodice is lined for more strength and warmth. Three front closing variations are ties sewn on both sides of the front, lacing through eyelets on the front or buttons with loops.

You cannot help but be impressed with the simplicity and elegance of these Patterns!

Multi-sized,
8 - 20

PM/55 - WOMAN'S CLOTH ACCESSORIES

The Woman's Cloth Accessories Pattern includes Pockets, Kerchiefs, Mob Cap and Bonnet. Eighteenth century women wore one or two Pockets under their apron or skirt for carrying things. These oval bags are tied around the waist with a tape and the slit opening is accessible through openings in the skirt. The pocket is sometimes decorated with embroidery. Kerchiefs come in several sizes and can be worn in a variety of ways. Small, tied around the neck. Medium, over the shoulders and tucked in the bodice and Large, used as a shawl. A Mob Cap is a simple circular hat that ties with a drawstring around the head. Usually made of fine white muslin, the cap can also be tied with a drawstring or colored ribbon. The Bonnet is more fitted than a mob cap and ties under the chin. A self fabric ruffle or lace trim is sewn to the front edge. This fine pattern includes all of these items and they are designed to make a fine addition to your costume.



17

PM/56 - WOMAN'S CHEMISE



The under-most garment that was basic to women of the colonial and fur trade eras was the Woman's Chemise. This could serve as both an undergarment and nightgown and was also called a shift, or smock. Traditionally made of fine linen, silk or cotton, the chemise has a gathered scooped neckline and gussets above or below the elbow sleeves. Tucks or gathers on the sleeves and gussets under the arms are construction details similar to the men's shirts of the era.

This pattern, with drawstrings in the neckline and sleeve, can be made in solid fabric for an undergarment or of calico, worn with a belt, and used as a dress as was common in historic days. Lace may be added to the neckline and sleeves and a ruffle to the bottom of the skirt.



PM/56 - WOMAN'S LEATHER ACCESSORIES

All of the items in this pattern were used by the Indians and fur traders. Included are an Awl Case, Fringed Bag, Knife Sheath, Mirror Pouch, Ration Card Bag, Scissors Pouch, Sea Fringed Pouch and Tobacco Pouch.

These items were usually decorated with beadwork, quillwork, corns, tin cones and other adornment. Tribal differences were mainly in the kind and manner of the decorations used and included with the pattern is a section of sources for adornment and variations.

PM/57 - WOMAN'S SKIRT AND APRON

This fine Pattern includes detailed, illustrated instructions for the construction of Woman's Skirts, Petticoats and Aprons and is a must for the Traditional Lady.

The kind of fabric, the amount of material in a Skirt or Petticoat and the kind of waistband used were indicative of the "station" and living style of a woman in the 18th and 19th centuries. Linen or wool were used for everyday and for many women that was all they had or could afford. For special occasions, finer weight fabrics and silk and cotton were used.

This Skirt Pattern has either a peasant style drawstring waistband or a fitted waistband, side slits for reaching into Pockets (see PM/55) and has two optional lengths. The Apron has an option of two bib front styles.

As with all Eagle's View® Patterns, all terms are fully defined in the handy glossary and this is combined with bold illustrated instructions that make using these patterns easy even for the novice seamstress.



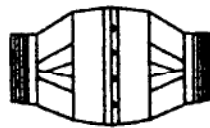
EACH PATTERN \$10.95

UNDERBUST CORSETS

Ladies' Ribbon Corset and Corset Girdle, Man's Corset
Misses Sizes 4-36, Men's Sizes 22-64, All in the Package

View A

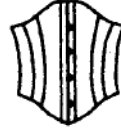
Ribbon Corset



View A Front

View B

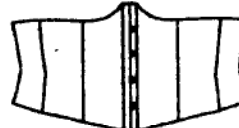
Corset Girdle



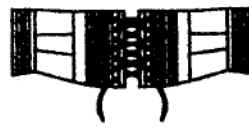
View B Front

View C

Man's Corset



View C Front



View A Back



View B Back



View C Back

Underbust Corsets- Views A and B are ladies' corsets and View C is a man's. View A is a ribbon corset. It is constructed of alternating pieces of fabric and ribbon. It has a busk in the front and lacing the back. The bones are placed between two layers of fabric. This corset was popular from about 1899 to 1909. View B is a one layer corset girdle made with a busk in front, lacing in back, and boning tape. The dates for this corset are about 1894-1909. View C is a gentleman's corset made with a busk, lacing in back and boning tape. Gentlemen wore corsets in the Victorian and Edwardian eras. All views in one pattern. \$15.00

Most of these patterns are so complete that they cover different tribal styles, methods of beading, sewing, attaching fringe, etc. Easy to follow instructions are complete with detailed illustrations and photos to help simplify the task at hand for expert and novice alike.

In addition to the pattern itself, each contains photos, fabric and notions information plus a complete guide with general garment making tips and pattern information such as layout, stretching and cutting buckskins, cutting fringe and laces, attaching tin cones, adjusting patterns, marking fabric and leather and much more.

Order by pattern name and number.

All patterns are multi-sized.

Each pattern is \$9.95 + shipping.

JINGLES \$25.00 PER/100, SILVER ONLY



INDIAN WOMEN'S ACCESSORIES

Consists of several patterns with illustrated instructions. Northern and Southern belt sets (strike-a-light, awl and knife cases), mirror bag, large knife sheath, Northern Plains leggings, medicine pouch, and buckskin purse are all featured.

4799-500-020

PLAINS HI-TOP MOCCASINS

This pattern takes all the guesswork out of moccasin making! Using our simple, instructions, even a beginner can create a fine looking pair of authentic hi-tops. Includes correct decoration information for several tribal styles. Sizes: Men's 7-12 and Women's 5-10

4799-500-011

PLAINS STYLE MOCCASINS

The only authentic moccasin pattern on the market. Illustrated instructions include helpful hints on assembly and show correct decoration for several tribal styles. Sizes: Men's 7-12 and Women's 5-10

4799-500-010

modeled by
Jessica Reddick
- Comanche

TRADECLOTH DRESS

Produces a fine quality dress from wool tradecloth or broadcloth, which can be left plain or decorated with cowrie shells, elk teeth or dentalium shells.

Authentically styled w/ variations for Sioux, Cheyenne, Crow, Blackfoot, Comanche, Kiowa and Kiowa-Apache. Sizes 6-20

4799-500-019

modeled by
Donald Cole
Echota Cherokee



modeled by
Darrell Goodwill
Dakota Sioux

GRASS DANCE OUTFIT

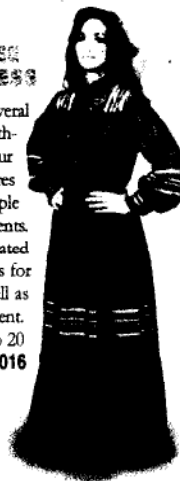
Patterns and instructions for assembly and decoration of a cape or shirt, apron, side tabs and pants. Produces a correctly styled modern Grass Dance outfit. Includes information on other components, accessories and variations of the outfit.

4799-500-018

CHEROKEE TEAR DRESS

Unique to several tribes of the southeastern U.S. Our pattern requires only a few simple measurements. Complete, illustrated instructions for sewing as well as ribbon placement.

Sizes 6 to 20
4799-500-016

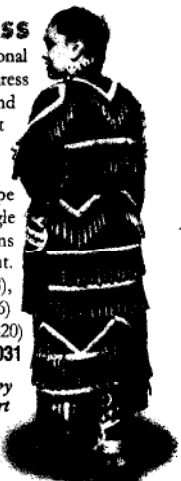


JINGLE DRESS

This traditional Northern Plains dress style has evolved and spread throughout the U.S. Our pattern allows you to make the under-dress, cape & apron type jingle dress with options for jingle placement. Makes sizes S (6-8), M (10-12), L (14-16) & XL (18-20)

4799-500-031

modeled by
Erica Hart

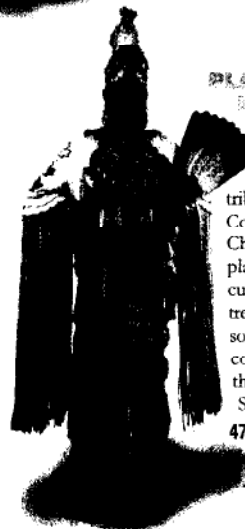


PLAINS INDIAN BUCKSKIN DRESS

Information on several tribal styles such as Comanche, Kiowa and Cheyenne. Beadwork placement, decorative cuts & accessories, fringe treatment, etc. are discussed so you can produce a correct hide dress with the appropriate detailing.

Sizes 6-20
4799-500-013

modeled by
Jbane Myers - Comanche

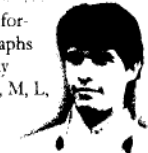


CHEROKEE MALE SHIRT

This early style pattern was developed from information gathered in museums and old photographs of Cherokee people. Produces an authentically detailed shirt in the correct tribal style. Sizes S, M, L, and XL.

4799-500-017

modeled by
Philip Cunningham
Comanche-Sioux



PLAINS WAR SHIRT

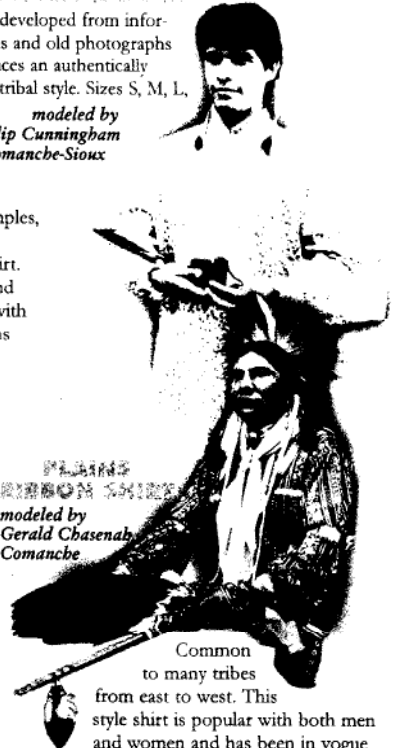
Developed from museum examples, this pattern will make a classic Northern Plains buckskin war shirt. Sioux, Cheyenne, Crow, Arapaho and Blackfoot style shirts are depicted, with hints on placement of various decorations and beadwork.

Sizes S, M, L, & XL
4799-500-009



PLAINS RIBBON SHIRT

modeled by
Gerald Chasenab
Comanche



Common to many tribes from east to west. This style shirt is popular with both men and women and has been in vogue since the introduction of cloth to the Indian trade. Will produce sizes S, M, L, XL & XXL.

4799-500-008

All patterns are multi-sized.

Order by pattern name and number.

Each pattern is \$9.95 + shipping.

CHILD'S CLOTH DRESS

An authentically styled simple camp dress. Includes information on tribal variations for Kiowa, Kiowa-Apache, Comanche, Cheyenne, Sioux, Crow and Blackfoot.

Sizes 6-16

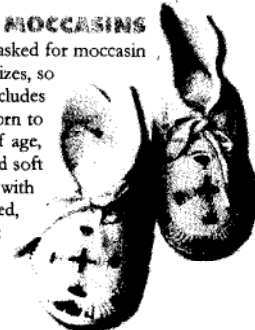
4799-500-202

modeled by
Leslie Carter
Chickasaw

**CHILD'S MOCCASINS**

Many of you have asked for moccasin patterns in kids' sizes, so here they are! Includes sizes from newborn to around 8 years of age, in both hard and soft sole. Complete with highly detailed, authentic instructions.

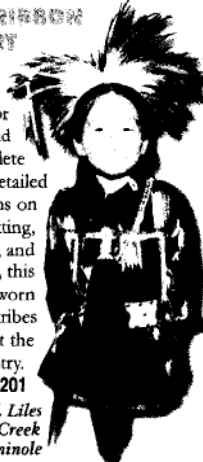
4799-500-206

**CHILD'S RIBBON SHIRT**

Now available in children's sizes 4-14, for both boys and girls. Complete with detailed instructions on layout, cutting, sewing, and decoration, this style shirt is worn by most tribes throughout the country.

4799-500-201

modeled by J.T. Liles
Comanche-Creek
-Seminole

**CHILD'S CAPOTE**

A capote is a great coat for a child. Our pattern gives complete, illustrated instructions and includes details and suggestions for various fringe treatments, decorations and trim.

Sizes 6 to 14

4799-500-204

**STRAIGHT DANCE SUIT & RIBBONWORK**

This pattern details the layout, cutting and sewing of broadcloth leggings, aprons & trailer worn by men of many Oklahoma tribes. Included are traditional patterns and instructions for fine ribbonwork.

4799-500-033

modeled by
Stanly Shunkamolah
Kiowa-Osage-Pawnee

**TRAPPER'S FRINGED BUCKSKIN SHIRT**

This classic shirt was first popularized by the fur trappers and traders and remained in use on the Plains throughout the 19th Century.

Many variations existed and are possible using our pattern. Sizes S, M, L, XL, & XXL.

4799-500-026

**YOUNG MAN'S JUNGLE DRESS**

A traditional Northern Plains dress style adapted for the younger Powwow participants. Contains specific information on jungle placement and additional decorations to personalize your dress. Sizes 6-16

4799-500-203

modeled by Roxanne Reddick - Comanche

**MOUNTAIN HAY CAPOTE**

Traditional style capote worn by most western tribes and Mountain men. Can be made from blankets for authenticity, or heavy wool. Includes several options for fringe treatment, decorations, etc., and is easy to make.

Sizes 36-52

4799-500-003

**BUCKSKIN PANTS**

An authentically styled, early pants pattern that can be made using any type of garment leather.

Typical of the early 1800s, these include a waistband, flared legs & button fly.

Accommodates waist sizes 30 - 42

4799-500-001

**WILDERNESS HUNTING STOCK**

NEW revised pattern includes larger sizes! This was standard wear for Eastern woodsmen from the French & Indian War until well after the Revolution.

Includes several options for cuffs, cape and fringe treatment.

Sizes M, L, XL & XXL.

4799-500-005

**FREE TRAPPER HAT**

Includes options for several authentic fur trade period hats using fur from bear, wolf, coyote, coon, etc. Detailed instructions give hints on decorating hats as well as assembly. Accommodates sizes 6 7/8 - 7 7/8

4799-500-012

**BREECHCLOUT AND LEGGINGS**

Our pattern allows several legging styles in leather and cloth including straight dance. Authentic tribal styles are discussed along with such important details as decoration and fringe placement.

Sizes S, M & L.

4799-500-006

**VOYAGEUR'S SHIRT**

Adapted from the Voyageur's Sketchbook, this authentic, loose fitting shirt was worn by fur traders and boatmen throughout North America from the mid-18th through early 19th centuries. Sizes S, M, L, XL & XXL.

4799-500-002

**MOUNTAINMAN'S WORKSHIRT**

A simple pullover style shirt with stand-up collar used for everyday wear during the late 18th and early 19th centuries. Can be made from several authentic materials.

Sizes S, M, L, XL & XXL.

4799-500-004

**DROP SLEEVE SHIRT**

This shirt was typical of those worn for everyday dress in the 18th and 19th centuries. Can be made from calico, wool, cotton, or linen. Complete, illustrated instructions accommodate the pullover or pleated front style. Sizes S, M, L, & XXL.

4799-500-015



POINT BLANKET PATTERNS

All sizes are included in each pattern.



BUCKSKIN WAR SHIRT
Sm., Med., Lg. & X Lg.

Pattern \$10.95



BLANKET CAPOTE - sizes 32 - 54
This pattern includes 7 styles as listed. Old Tailor, Voyageur, Duffel, Trapper, Caped, Metis, & Nor'wester.

Pattern \$14.95



CLOTH BROADFALL PANTS
26" - 48" waist measures

Pattern \$10.95



BUCKSKIN PANTS 26" - 48" waist.

Pattern \$10.95



CLOTH FRONTIER SHIRT
Sm., Med., Lg., & X Lg.

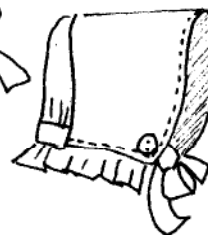
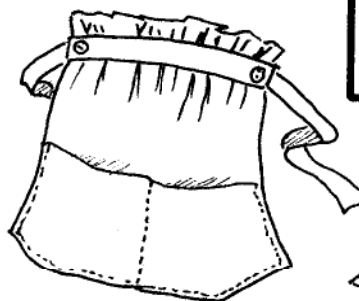
Pattern \$10.95

AMAZON'S INSTRUCTIONS ON HOW TO CHANGE THE SIZE OF A PATTERN, LARGER OR SMALLER
Complete instructions on "grading" patterns to any size (changing the size to either larger or smaller, to any other size or sizes) including men, ladies, women, children or teen. Instructions can be used on any pattern from Amazon as well as on modern pattern styles. Set of Instructions. . . . \$5.00

OZARK SUNBONNET

The original from which this pattern is made is 200 years old. The style was adapted from the bonnet that the French brought to America, although theirs were, without exception, starched pure white. We brought color and calico to the sunbonnet, thereby fashioning a distinctly American head covering. When you are inside its deep brim, you'll never wonder what people once did for lack of sunglasses. Fold the brim back on overcast days. The sunbonnet was worn in parts of the U.S. from the late eighteenth century to the Second World War.

Baby, Child & Woman's sizes,
all sizes included. \$6.25



PIONEER
BONNET & APRON
Combination Pattern,
can be made into a
Slat Bonnet. \$5.95



#714 1795 - 1825 TURBAN \$9.50



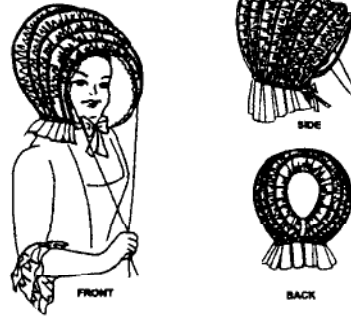
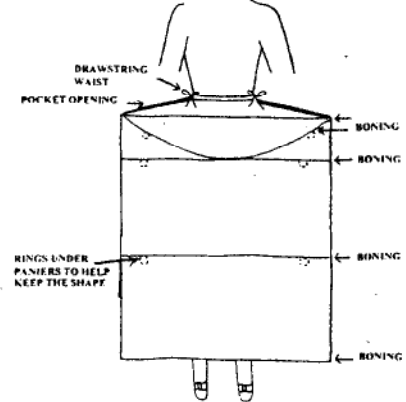
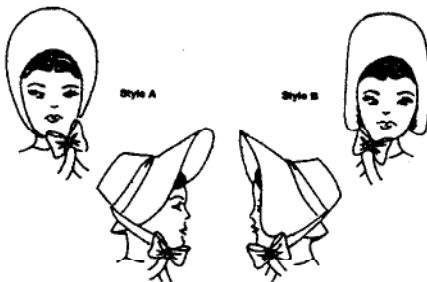
#716 1795 - 1825 "POUF" DAY BONNET \$9.50



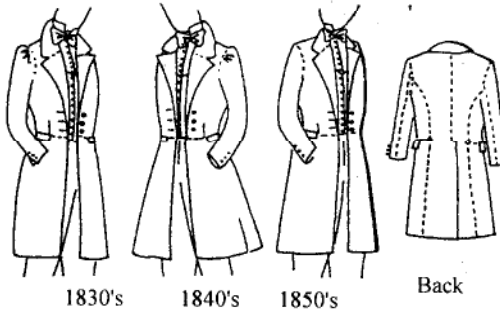
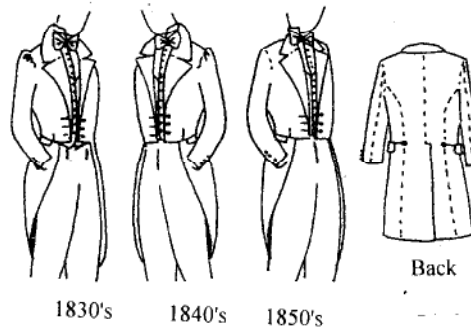
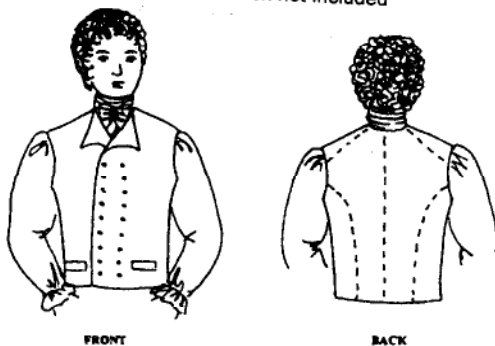
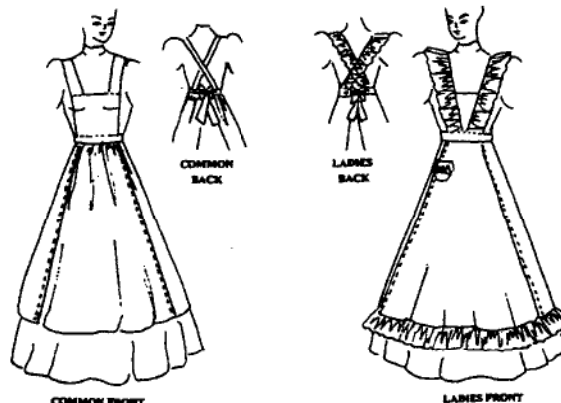
#724 1860's - GATHERED BONNET \$9.50



#706 CALASH \$9.50

#205 - PANNIERS
One size fits all \$10.95#720 1830's - 1840's BONNET
2 STYLES \$9.50

#722 1880's - MATRON'S (Married Woman) BONNET \$9.50

#212 - FROCK COAT 1790 - 1820
French Influence Size 34-48 \$21.50#324 - 1830's, 1840's & 1850's
FROCKCOAT Sizes 36-50 \$21.95#325 - 1830's, 1840's & 1850's
MEN'S DRESS COAT Sizes 36-50
\$21.95#211 - DOUBLE BREASTED WAISTCOAT
1790 - 1820 French influence sizes 34-48
\$10.95 Shirt & Stock not included#327 - VICTORIAN / EDWARDIAN APRON
\$10.95#201 - 18TH C. MOB CAP & APRON
All Sizes \$10.95

Amazon Drygoods
1 (800) 798-7979
411 Brady Street
Davenport, IA 52801-1518



PATTERNS FOR THEATRICAL COSTUMES

by Katherine Strand Holkeboer

342 pages. . . . 8½" by 11". . . . \$35.00

A book of garments, trims, accessories and more - from ancient Egypt to 1915, including animals and fantasy figures. There are hundreds of basic graphed pattern shapes for men and women to size and trim as desired. There are also step by step instructions for corsets, hoops, hats, crowns, masks and wigs. This is a very welcome book after 10 years out of print!

This book is NOT returnable.



TO
BE



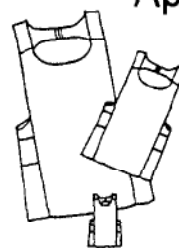
#101 - CASSOCK \$12.95

An adaptation of an historical vestment for children and slender adults 3'11" - 6'. The narrow yoke falls inside the natural shoulder. Back pleat, stand up collar. All sizes included. Shipping additional.

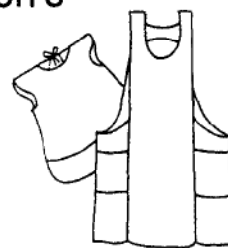
#201 - CROCHET PATT. \$5.95

A crochet pattern designed as a surplice for women clergy, but with many more uses. +post.

Aprons



1941 Apron L, XL, XXL
Child S, M, L
18" doll \$9.50



1940's Apron
Adult M (10-12)
Child \$8.50

All sizes included in each pattern.

AMAZON'S INSTRUCTIONS ON HOW TO CHANGE THE SIZE OF A PATTERN, LARGER OR SMALLER

Complete instructions on "grading" patterns to any size (changing the size to either larger or smaller, to any other size or sizes) including men, ladies, women, children or teen. Instructions can be used on any pattern from Amazon as well as on modern pattern styles. Set of Instructions. . . . \$5.00

Amazon Drygoods
1 (800) 798-7979
411 Brady Street
Davenport, IA 52801-1518