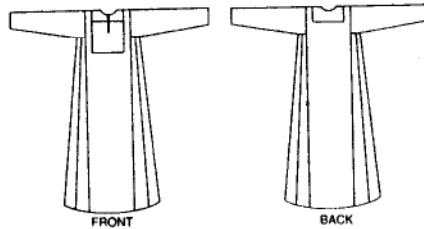




### #101 Gaza Dress

Misses 6-18. \$14.95

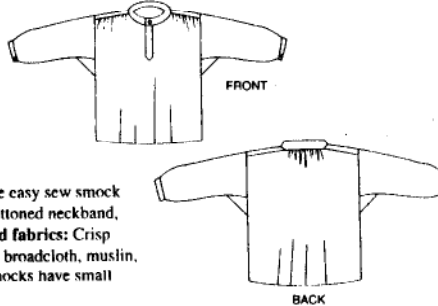
This ankle-length gown is composed of easy-to-construct panels that are perfect for pieced or handwoven fabric variations, needlework, and other embellishment. Create an heirloom with one of the traditional embroidery designs included in the pattern. **Suggested fabrics:** Crisp or soft fabrics such as denim, broadcloth, muslin, linen, lightweight wool. Traditional colors are black, indigo, white, or natural.



### #102 French Cheesemaker's Smock

Misses 6-20; Men's 32-46. \$14.95

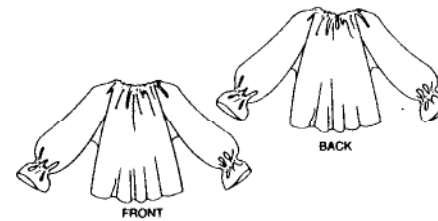
This roomy pullover style is traditional garb for cheesemakers in Roquefort, France, and a comfortable smock for your studio or daily outings. Popular choice for Medieval and Renaissance reenactors. Sized for men and women, the easy sew smock features shoulder yoke, simple narrow buttoned neckband, and optional underarm gussets. **Suggested fabrics:** Crisp medium-weight fabrics such as gingham, broadcloth, muslin, silk, lightweight corduroy. Traditional smocks have small blue and white checks.



### #103 Roumanian Blouse

One size fits Misses 6-16. \$16.95

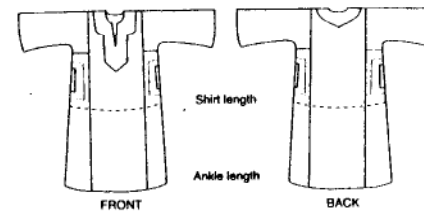
Add your own character to this classic European peasant blouse with traditional handwork techniques or modern embellishments. A great period look when worn under a fitted vest or jacket. Instructions for embroidery, smocking, crocheted edging, and fine hand sewing are included. **Suggested fabrics:** Lightweight, soft fabrics such as fine cotton or linen, silk crepe, muslin, cotton gauze.



### #104 Egyptian Shirt

Misses 6-16; Men's 32-44. \$16.95

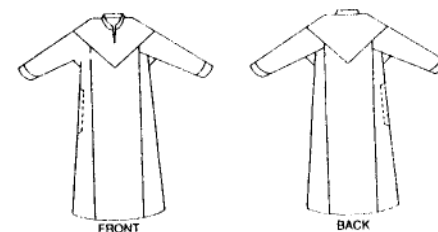
This is a shortened version of the traditional Egyptian *galabia* or robe. Loose fitting style with side panels and slit pockets. The yoke can be turned to the inside, or to the outside for interesting contrast. Instructions are included for knotted buttons, decorative cording, soutache appliqué, and lengthening the shirt to make the galabia. **Suggested fabrics:** Crisp or soft fabrics such as cottons, muslin, lightweight denim, broadcloth. For appliqué pieces, use 100% cotton.



### #105 Syrian Dress

Misses 6-18. \$14.95

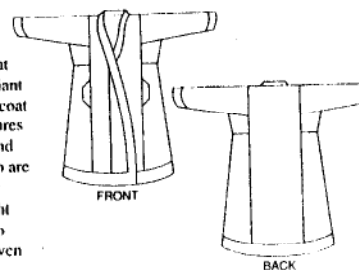
For crossing the deserts of Africa or the urban landscape, this flowing dress drapes gracefully from a triangular shoulder yoke that's a perfect canvas for needlework or fabric artistry. Pattern includes instructions for optional embroidery stitches and design motifs. **Suggested fabrics:** Crisp or soft fabrics such as lightweight denim, broadcloth, cotton, linen, lightweight wool. Traditional colors are black, blue, white, or red.



### #106 Turkish Coat

Misses 6-16. \$16.95

A favorite with quilters and clothing artists, this coat originated in Central Asia, where it is made in brilliant silks and floral cottons. The boot-length reversible coat is perfect for inventive fabric combinations. It features a quilted or trapunto border at the hem, neckline, and front opening. Instructions for quilting and trapunto are included. **Suggested fabrics:** Medium-weight, soft fabrics such as broadcloth, silk, linen, or lightweight wool. The coat's segmented design makes it easy to incorporate small pieces of your treasured handwoven or vintage fabrics.



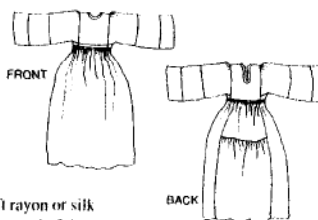
**FOLKWEAR®**  
patterns with timeless style



### #107 Afghani Nomad Dress

Misses 6-16, \$16.95

This traditional dress worn by nomadic women in Afghanistan is ideal for mixing fabrics and embellishments. The raised bodice is fitted and has a neck opening that can be placed at front or back. Pattern includes instructions for traditional embroidery stitches, fringed decoration, and beadwork. **Suggested fabrics:** Soft, medium-weight fabrics such as cotton, rayon challis, or silk; the upper sleeve and/or skirt may be of soft rayon or silk velvet. This dress is often made in many pieces, which is a wonderful opportunity to use up bits and pieces of brilliant fabrics.



### #108 Turkish Dancer

Misses Extra Small to 2XL, \$19.95

A beautiful three-piece ensemble based on 19th-century Ottoman Empire fashions, including flowing *entari* gown, fitted vest, and jacket. Easy-sew garments are perfect for wearable artists, costumed, belly dancers, and reenactors. Add elaborate embellishment with machine embroidery, bead trim application, and beadwork for a lavish look. Wear with #106 Turkish Coat and the Turkish Pants from #119 Sarouelles for a complete and authentic look. **Suggested**

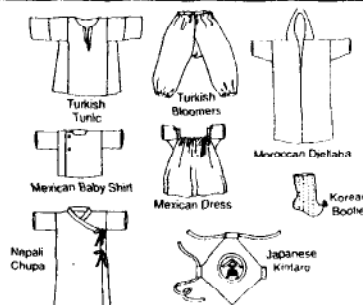
**Fabrics:** For the Entari, lightweight drapey silk, polyester, rayon for a gown; or medium-weight silk, linen, cotton, or wool for a coat. For the Jacket and Vest, all weights of silk, linen, velvet, cotton, wool, felt, denim, brocade, satin, suede, upholstery fabric. If using lightweight fabrics, interface pieces before construction with compatible interfacing.



### #109 Little Folks

Sizes Infant-4T, \$19.95

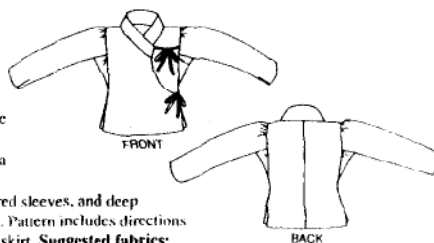
An international collection, featuring eight patterns and a variety of optional handwork techniques. Dress your sweeties up in a Japanese Kintaro, Mexican Dress and Baby Shirt, Korean Booties, Nepali Chupa, Moroccan Djellaba, or Turkish Tunic and Bloomers. **Suggested fabrics:** Light to medium-weight cottons such as broadcloth, batiste, muslin, corduroy, or flannel.



### #111 Nepali Blouse

Misses Extra Small to Extra Large, \$14.95

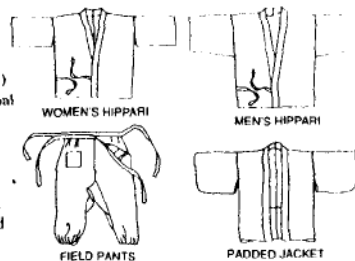
In Nepal, this wrap-and-tie blouse is traditionally made of velvet and worn under a wrap-style *chupa* or jumper (like our #131 Tibetan Chupa) or over a wrapped and pleated skirt formed from a sari or length of fabric. The semi-fitted blouse features a wide band collar, tapered sleeves, and deep underarm gussets for ease of movement. Pattern includes directions for wrapping and pleating a companion skirt. **Suggested fabrics:** Lightweight fabrics with drape such as rayon, velvet, or silk; medium-weight cotton; lightweight wool. Traditional colors are shades of red, pink, or purple.



### #112 Japanese Field Clothing

Misses 6-16; Men's 32-44, \$19.95

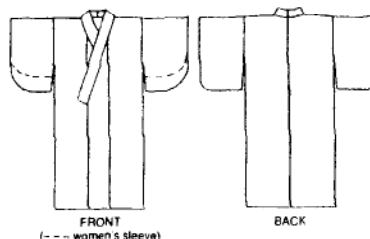
Versatile and comfortable garments include the *hippuri* (jacket) for men and women, *numpei* (pants) and padded jacket for women. Beautiful in traditional ethnic prints or coordinating new age fabrics. Instructions included for traditional folded and stitched ties. **Suggested fabrics:** For Hippuri and Field Pants, choose medium-weight tightly woven materials such as cotton, lightweight denim, or silk. Traditional Japanese fabrics are usually indigo-dyed ikat weave or striped cotton in blue, black, gray, or brown. For Padded Jacket, choose light to medium-weight cotton, silk, or rayon, or lightweight wool.



### #113 Japanese Kimono

Sized for men and women to 6 ft. tall, \$16.95

The timeless simplicity of this elegant garment is still enchanting. Our unlined informal kimono (*yukata*) can be worn in various lengths, as a dress, coat, or robe. Pattern includes instructions for *shibori* dyeing, *sashiko* embroidery, and for making an informal *obi* or sash. **Suggested fabrics:** Light or medium-weight cotton, rayon, or silk. Yukata kimono are often blue and white, or other colorful prints.



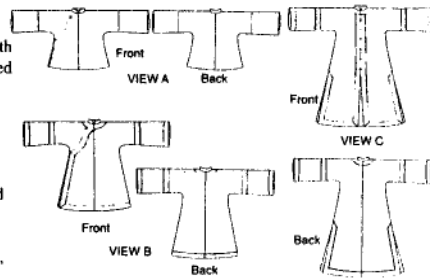


### #114 Chinese Jacket

Misses 6-16, \$19.95

This classic jacket in three lengths and with front or asymmetrical opening is descended from a formal court robe of the Ming Dynasty (1368-1644). Since then, the garment has been simplified into a truly versatile design with different options for unusual closures. Pattern includes heat transfer design for traditional embroidered motifs and instructions for embroidery.

**Suggested fabrics:** Silk or silk-like synthetics, light or medium-weight cotton, or lightweight wool.

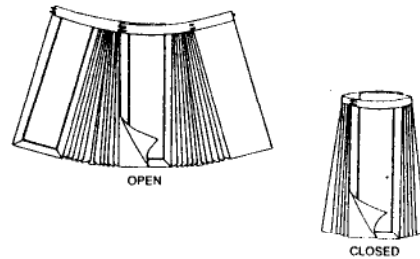


### #115 Chinese Skirt

Misses 6-16, \$16.95

An ingenious divided skirt traditionally worn by nomadic Chinese tribal women. The skirt is made of two identical pleated sections fastened together at the waist with knotted frogs. Pattern includes instructions for embellishing and wearing the skirt, as well as a transfer pattern for traditional embroidery motifs.

**Suggested fabrics:** Silk or silk-like synthetics, light or medium-weight cotton, or lightweight wool.

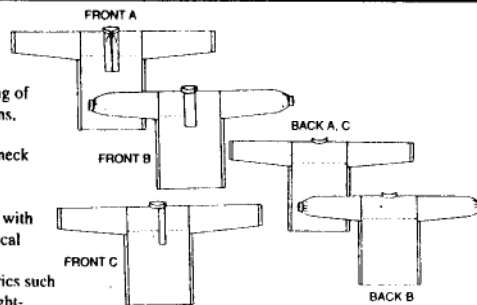


### #116 Shirts of Russia & Ukraine

Misses 6-20; Men's 32-48, \$16.95

These popular shirts reflect a merging of European and Central Asian traditions, and can easily be lengthened for versatile dress or robe styles. Three neck opening variations, including center front and side front. Make the basic design quickly and then embellish it with authentic embroidery motifs. Historical lore and embroidery instructions

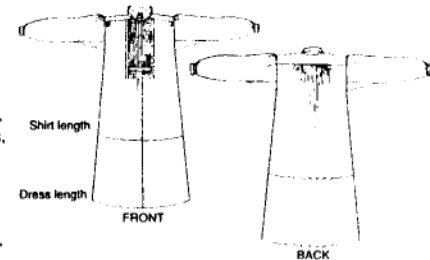
included. **Suggested fabrics:** Light or medium-weight soft fabrics such as cotton, broadcloth, linen, chambray, muslin, rayon challis, lightweight wool, or silk.



### #117 Croatian Shirt

Misses 6-20; Men's 32-48, \$14.95

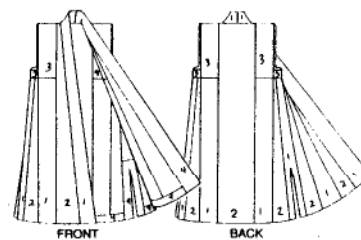
A traditional fashion worn by peasants, farmers, and shepherds in the Pannonian Basin of old Yugoslavia. Originally made from homespun linen, but elegant in cotton, silk, and sheers. Soft pleats at the shoulders, with a tucked front yoke. Pattern includes historical information and instructions for decorative stitching on yoke. **Suggested fabrics:** Shirting-weight fabrics such as cotton, blends, broadcloth, linen, chambray, muslin, gingham, or silk.



### #118 Tibetan Panel Coat

Misses 6-18, \$16.95

A festive full-length vest or sleeveless coat still worn by Tibetans today on special occasions. Its simple rectangular components make it perfect for pieced or handwoven fabrics, or exciting combinations of color and texture. Pattern includes instructions for traditional stamped design and bound edge, as well as notes for handweavers. **Suggested fabrics:** Choose assorted combinations of prints and solids in similar weights. Light to medium-weight cotton, blends, corduroy, wool; decorative fabrics such as brocade, velvet, embroidered heirlooms; handwoven wool.

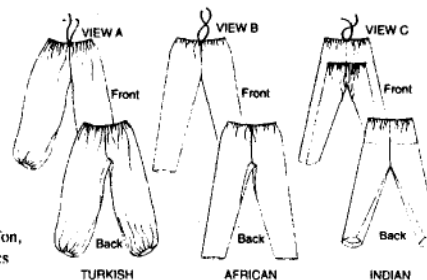


### #119 Sarouelles

Misses 6-18; Men's 32-44, \$14.95

Three comfortable and timeless pants designs from Turkey, Africa, and India, with elastic or drawstring waist and ankle variations. Full and flowing easy sew styles are perfect for casual wear, yoga, belly dancing, or costuming. Historical lore and traditional embroidery designs included. **Suggested fabrics:** The Turkish pants look best in

lightweight sumptuous fabrics with drape, such as rayon challis, chiffon, or gauze. For African and Indian pants, choose medium-weight fabrics such as cotton, silk, rayon, wool, or blends.



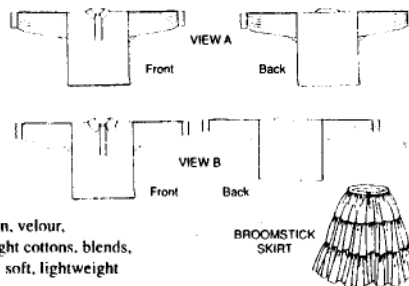
FOLKWEAR®  
patterns with timeless style



## #120 Navajo Blouse & Skirt

Misses 4-20; Girls 4-10, \$14.95

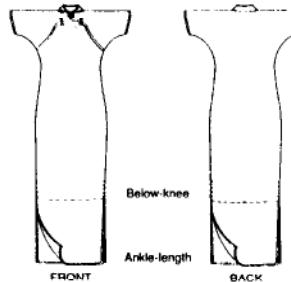
This pullover blouse was traditionally made of velvet, lined with calico, embellished with silver buttons, and worn with a calico "broomstick" skirt. Vary the fabric combinations to match your own personal style. Pattern includes complete blouse instructions, drawings for tiered skirt, and tips for broomstick pleating effect. **Suggested fabrics:** Velvet, velveteen, velour, lightweight corduroy, light to medium-weight cottons, blends, and wool. For optional contrasting facings: soft, lightweight cotton (calico is traditional) or blends.



## #122 Hong Kong Cheongsam

Extra Small to 3X Large, \$16.95

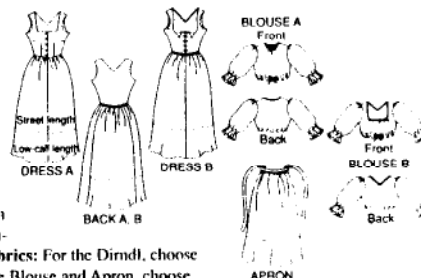
This classic exotic dress in two lengths is synonymous with Oriental elegance. Simple to sew, it has only two main pattern pieces and an appealing side-front opening topped off with a mandarin collar. Pattern includes instructions for custom fitting and authentic embellishment. **Suggested fabrics:** Light to medium-weight silk; lightweight brocade and jacquard weaves; satin; rayon or blends.



## #123 Austrian Dirndl

Misses 8-16, \$16.95

A favorite at Renaissance Faires and Oktoberfests, this three-piece outfit enhances the maiden in you. Variations include knee-length or low-calf length, dirndl bodice with high or low neck, high- or low-neck blouse, and an apron. Pattern features many options for detailing, ruffling, ricing, and shaping. Information included about authentic detailing, custom-



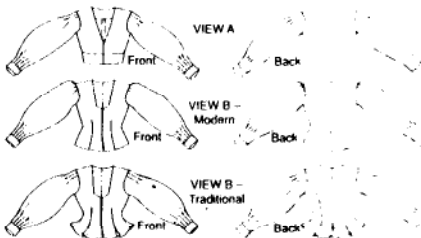
fitting, and adapting garment for Renaissance costumes. **Suggested fabrics:** For the Dirndl, choose medium to heavyweight cotton, silk, wool, velvet, or corduroy. For the Blouse and Apron, choose light to medium-weight cotton, silk, rayon, or blends. The Apron is also nice in taffeta.



## #124 Bolivian Milkmaid's Jacket

Misses \$14.95 8-22

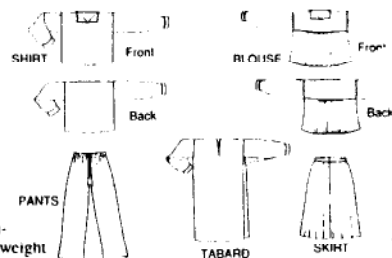
These short jackets, worn by women of the Bolivian altiplano, are reminiscent of Spanish Conquistador costumes. Beautiful in brightly colored velvet and trimmed with heading and braid. Pattern includes jacket lore and instructions for authentic detailing. **Suggested fabrics:** Medium to heavyweight fabrics such as velvet, wool, corduroy, flannel, cotton, linen, or silk.



## #125 Huichol Wardrobe

Blouse and skirt sized for Misses 6-16; all other pieces Misses small to Men's large, \$19.95

The lavishly embroidered clothing of the Huichol (pronounced "WEE-chole") Indians of Mexico reflects the richness of their culture. This easy-to-sew collection of traditional garments offers many possibilities for creative embellishment. Information about Huichol dress and authentic detailing included. **Suggested fabrics:** Light to medium-weight cotton, rayon, linen, or blends; medium-weight silk, muslin, linen; lightweight wool or blends.



## #126 Vests from Greece and Poland

Misses 6-16; Men's 34-44, \$16.95

These authentic designs can be lavishly decorated, embroidered, appliquéd, and otherwise embellished. Styles include a short vest for men and women from Greece, mid-calf Greek vest for women, and two variations of a Polish woman's vest with petal-shaped tabs along the bottom edge. Pattern pieces include traditional design motifs. **Suggested fabrics:** Medium to heavyweight, closely woven fabrics such as denim, velveteen, corduroy, silk, velvet, wool, blends, and upholstery fabric.



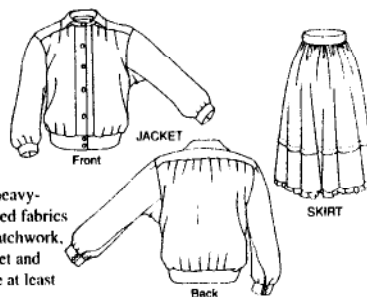


### #127 Seminole Jacket & Skirt

Misses 6-16; Men's 34-44. \$16.95

This dirndl style skirt and blouson jacket are distinguished by the intricate and colorful piecing known as Seminole patchwork. The skirt features an optional dust ruffle and hem tuck. Pattern includes information about the history and technique of Seminole patchwork. **Suggested fabrics:** For Jacket without patchwork, choose medium to heavy-weight cotton, wool, linen, flannel, blends, or napped fabrics such as corduroy or velveteen. For Skirt without patchwork,

choose light to medium-weight cotton, rayon, wool, linen, or blends. For Jacket and Skirt with patchwork, choose light to medium-weight cotton or blends that are at least 50% cotton.

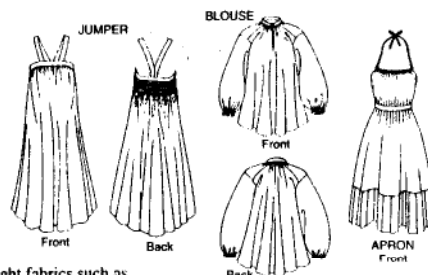


### #128 Russian Settlers' Dress

Misses 6-16. \$16.95

A complete ensemble from Old Russia that includes jumper, blouse, and apron, along with options for lace and embroidered embellishment. Wear the jumper by itself as a sundress or combine with other pieces for a variety of looks. Pattern includes historical information about Russian peasant costume and instructions for traditional punch needle embroidery.

**Suggested fabrics:** Light to medium-weight fabrics such as silk, cotton, rayon, linen, or blends in challis or crepe.

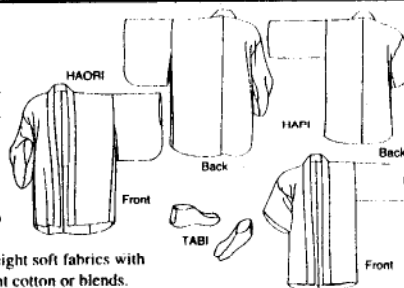


### #129 Japanese Hapi and Haori

Misses 6-20; Men's 34-44. \$16.95

For formal occasions or everyday layered dressing, either jacket offers a special touch to any wardrobe. Simple rectangular shapes are great for inventive color and texture combinations. A pattern for the *tabi*, the traditional split-toe slipper socks, is included. **Suggested fabrics:** For the Hapi, choose light to medium-weight soft or crisp cottons or blends; silks with body such as

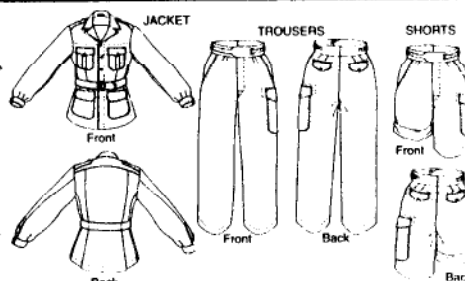
noil or shantung; linen; wool. For the Haori, choose light to medium-weight soft fabrics with drape such as silk, rayon, or blends. For the Tabi, choose medium-weight cotton or blends. Fabrics with nap, pile, or one-way design are not suitable for either jacket.



### #130 Australian Bush Outfit

Misses 8-20; Men's 34-44. \$19.95

The bush jacket, trousers, and shorts from Hollywood's version of the tropical British colonies. Make it in khaki for the authentic look, or silk twill for a classy updated impression. Pattern includes instructions for the slingeroo, a handy over the shoulder bag that completes the outfit. **Suggested fabrics:** Medium-weight cottons and blends such as poplin, denim, or chino; medium-weight linen; light-weight wool gabardine.

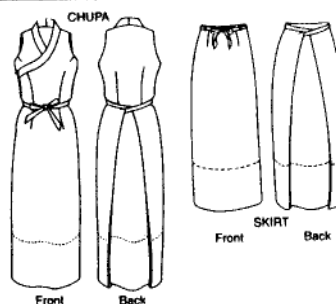


### #131 Tibetan Chupa & Wrap Skirt

Misses Extra Small to Extra Large. \$16.95

This wrapped jumper has a centuries-long history in Tibet. The Chupa features an asymmetrical wrap front, wide neckband, and simple faced armholes. Both the Chupa and Chupa-inspired skirt have unique side extensions that wrap around the back to tie in front. The resulting silhouette is slim, yet the extensions enable enough leg room to make walking easier than most wrap skirts. **Suggested**

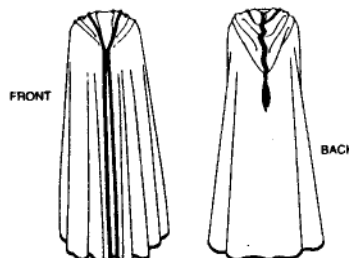
**fabrics:** Medium-weight cottons and blends such as denim, corduroy, velveteen, and poplin; medium-weight linen; medium-weight wool such as flannel, gabardine, and tweeds; medium-weight silk such as noil or tussah.



### #132 Moroccan Burnoose

All sizes. \$14.95

This sweeping cape is traditionally worn by Berber tribesmen over loose tunics, but it's also dramatic when untraditionally worn over urban outfits. The bias cut half circle design features an ample hood for protection from the sand and sun, or for discreet camouflage. Details are included about different ways of wearing and draping the finished garment. **Suggested fabrics:** Medium to heavyweight wools and blends; upholstery-weight cottons or linen. Uneven plaids and napped fabrics are not suitable.



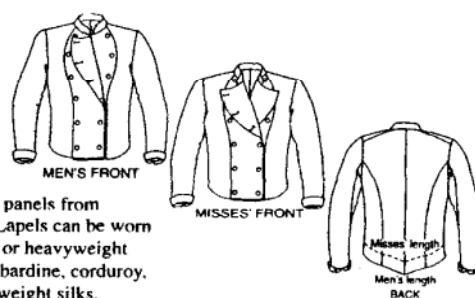
**FOLKWEAR®**  
patterns with timeless style



## #133 Belgian Military Chef's Jacket

Misses 8-18; Men's 34-44. \$14.95

Adapted from regulation Belgian military issue in olive cotton gabardine, our version also looks great in chef's white, brilliantly colored silk, or any other fabric. Cook up a creative variation of this fashionably cropped jacket by piecing the front and back panels from contrasting fabrics or with unusual buttons. Lapels can be worn open or closed. **Suggested fabrics:** Medium or heavyweight cottons and blends such as poplin, denim, gabardine, corduroy, linen; light to medium-weight wool; suiting weight silks.

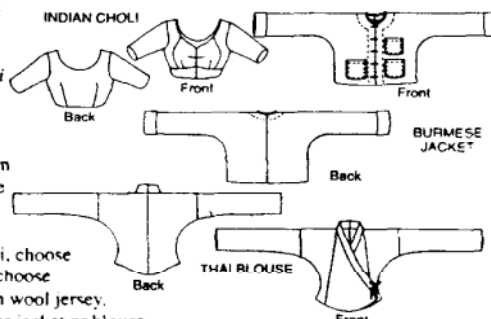


## #134 South Asian Tops & Wraps

Extra Small to 3X Large. \$16.95

An exotic mini-wardrobe with Burmese jacket, Thai wrap blouse, and Indian *choli* to wear with a sari. Pattern also gives instructions for making three types of knotted frog closures and wearing the traditional sarong skirts and sari. Lengthen the tops for different looks or to showcase luscious fabrics. **Suggested fabrics:** For the Burmese Jacket and Thai Blouse,

choose medium-weight cotton, silk, or lightweight wool. For the Choli, choose light to medium-weight cotton or silk. For the sari and sarong wraps, choose lightweight silks, synthetics, or cottons. Sarong can also be made from wool jersey, challis, or crepe. Fabrics with nap or one-way prints are not suitable for jacket or blouse.

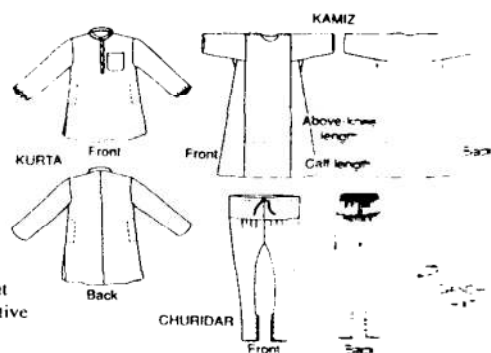


## #135 Jewels of India

Misses 6-16; Men's 34-44. \$19.95

A grouping of truly versatile garments with a tailored *kurta* overshirt for men and women, *kamiz* tunic and bias-cut *churidar* pants for women. The simple shapes of these garments make it easy to vary them creatively. Top everything off with the Gandhi hat. Pattern includes historical information about Indian dress. **Suggested fabrics:** For the Kurta, choose

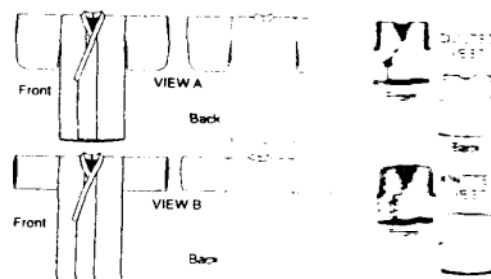
any shirting fabric from gauze to flannel. For the Kamiz and Churidar, choose light to medium-weight cottons, silks, or synthetics; lightweight wool. For the hat, choose medium-weight cotton, silk, or wool; decorative weaves or brocade.



## #136 Child's Kimono & Vests

Children's 2-10. \$16.95

A Japanese kimono with two sleeve choices for girls and boys, along with a companion quilted vest that's a snap to make from pre-quilted fabric. Pattern also includes instructions for a diamond stitch knitted version of vest and information about authentic detailing, including making and tying an obi sash. **Suggested fabrics:** Light to medium-weight cotton, rayon, silk, or blends; also pre-quilted fabrics for Quilted Vest.



## #137 Australian Drover's Coat

Misses 6-22; Men's 34-48. \$19.95

This is the classic outback duster coat. Its rugged construction and hearty design is perfect whether riding the open range or the urban trails. Make it in canvas or denim for a traditional look, microfiber or crinkle nylon for an updated water-repellent version. Pattern includes

information about authentic detailing, waterproofing, and instructions for a knit pullover sweater. **Suggested fabrics:** Medium-weight denim, canvas, poplin, wool, linen; ripstop nylon, microfiber, or other water-resistant fabrics.

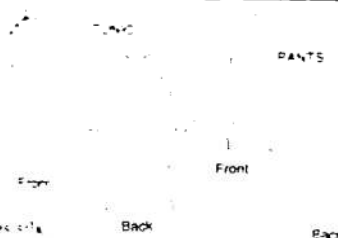


## #139 Vietnamese Ao Dai

Misses Extra Small to Extra Large. \$19.95

This feminine ensemble of flowing Tunic and wide-legged pants is considered to be the traditional costume of Vietnam. The easy-sew Tunic features front and back waist shaping darts, mandarin collar, front neckline/armhole opening, tapered long sleeves with elbow darts, and long free-hanging front and back panels. The Pants have an easy full-legged fit, center

back zipper, and faced waistline. **Suggested fabrics:** Lightweight, drapery fabrics such as silk, polyester, or cotton gauze for Tunic and/or Pants; also embroidered brocade for Tunic. Ao Dai pants are typically white; the Tunic can be plain white, a plain or patterned color, or the traditional red and gold for a wedding garment.

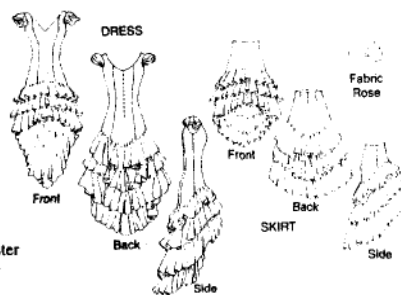




### #140 Flamenco Dress and Practice Skirt

Misses Extra Small to Extra Large. \$19.95

A sensational fashion for dancing or dress-up, with lavish flounces that move with flash. Dress has princess seams, flounced cap sleeves, V-neck front, and up to four tiers of flounces. Skirt has back waist darts and raised waistline; make it with all four flounces or just one flounce for a salsa-hot mini. Make simple-sew fabric Rose accessories to dress or pin in hair. **Suggested fabrics:** Silk or polyester doupioni, taffeta, faille; other fabrics with body and slight stiffness. For lightweight drapey fabrics, lightly interface flounces.



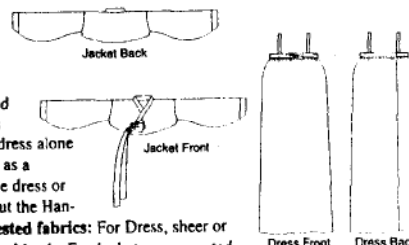
sorry to attached to dress or pin in hair. **Suggested fabrics:** Silk or polyester doupioni, taffeta, faille; other fabrics with body and slight stiffness. For lightweight drapey fabrics, lightly interface flounces.



### #141 Korean Han-Bok

Misses Extra Small to Extra Large; Child's 4-14. \$19.95

This is the traditional costume of Korea, composed of the *chogori* or short jacket and *chima* or full dress. Wear both components of the Han-Bok in the traditional way, the dress alone as a sheer summery sundress, or the jacket as a dramatic art-to-wear companion to a simple dress or tunic. Pattern includes historical notes about the Han-



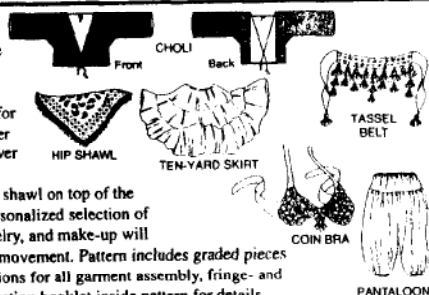
Bok and design motifs from different periods of Korea's history. **Suggested fabrics:** For Dress, sheer or lightweight fabrics with drape, such as silks, cottons, rayon, or polyester blends. For Jacket, as suggested, for Dress, as well as lightweight fabrics with more body, such as handkerchief linen or taffeta.



### #144 Tribal Style Belly Dancer

Choli: Misses Small (10-12) to 2X Large (26-28) in B, C, and D cups; other garments gathered or tied to fit. \$19.95

This pattern is the perfect starting point for creating your own stunning style, whether you're a dancer, historic reenactor, or lover of exotic fashion. Layer the Coin Bra on top of the Choli, the Tassel Belt and Hip shawl on top of the Ten-Yard Skirt and Pantaloon. Your personalized selection of fabrics, fringes, tassels, adornment, jewelry, and make-up will



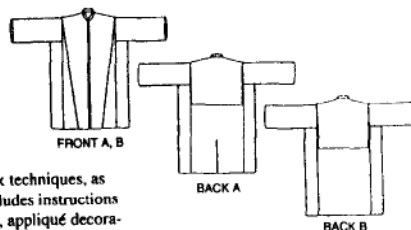
turn this tribal collection into a wondrous extravaganza of color and movement. Pattern includes graded pieces for choli, cutting diagrams for other garments, and complete instructions for all garment assembly, fringe- and tassel-making, and embellishment. **Suggested fabrics** vary; see instruction booklet inside pattern for details.



### #150 Hungarian Szur

One size for men and women. \$16.95

Worn by Magyar herdsmen in Hungary as far back as the Middle Ages, the Szur is a dramatic, mid-calf coat that was traditionally worn over the shoulders as a cape and lavishly decorated with cutwork felt appliqué. The geometric shapes of this garment make it an ideal canvas for other handwork techniques, as well as for handwoven fabrics. Pattern includes instructions for a traditional and contemporary version, appliqué decoration, and historical lore about the Magyar. **Suggested fabrics:** Heavyweight fabrics such as wool, felt, corduroy, or denim; also water-repellent microfiber for a raincoat. The Szur is traditionally made in felted wool with felt appliques.



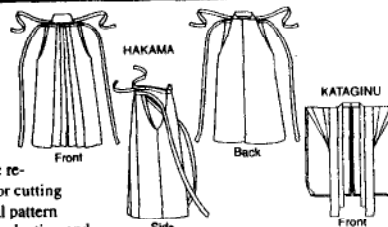
tion, and historical lore about the Magyar. **Suggested fabrics:** Heavyweight fabrics such as wool, felt, corduroy, or denim; also water-repellent microfiber for a raincoat. The Szur is traditionally made in felted wool with felt appliques.



### #151 Japanese Hakama & Kataginu

Hakama, all sizes. Kataginu, one size. \$14.95

These two essential garments from the traditional samurai or warrior costume were worn over a knee-length kimono for formal occasions. Today, they are frequently worn for official occasions, martial arts, and historic reenactment. The pattern includes instructions for cutting and pleating the Hakama in any size and actual pattern



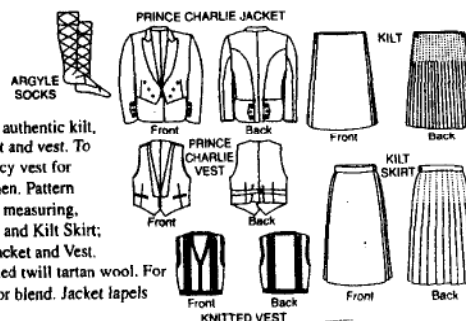
pieces for the Koshiita (backboard) in three sizes, as well as tips for fabric selection and Koshiita stiffeners. The Kataginu is easy to pleat and sew, and can be made to match the Hakama for a traditional appearance or as a contrasting wearable art accent. **Suggested fabrics:** For Kataginu, crisp fabrics that maintain their shape, such as linen, ramie, hemp, silk taffeta. For Hakama, same as Kataginu, but also lightweight wool suiting. Note: Kataginu fabric may have to be starched to preserve pleats, as they are not stitched.



### #152 Scottish Kilts

Kilt, all sizes. Jacket and vest, Men's 36-48. Knitted vest, Misses S, M, L. \$19.95

The romance of the Scottish Highlands is alive and well in this authentic kilt, kilt skirt, and Prince Charlie jacket and vest. To complete the ensemble, knit the lacy vest for women and the argyle socks for men. Pattern includes complete instructions for measuring, pleating, and constructing the Kilt and Kilt Skirt;



pattern pieces for cutting out and instructions for sewing the Jacket and Vest. **Suggested fabrics:** For the Kilt, choose medium-weight worsted twill tartan wool. For the Jacket and Vest, choose suit-quality medium-weight wool or blend. Jacket lapels should be heavyweight silk (peau de soie or similar quality).

FOLKWEAR  
patterns with timeless style

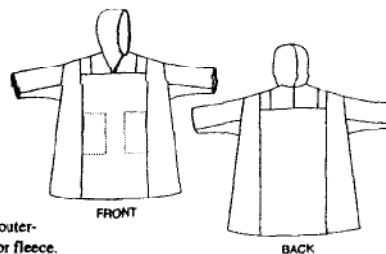




## #153 Siberian Parka

Sized for men and women Extra Small to Extra Large. \$16.95  
A generously-sized pullover parka based on a smock worn by men in Western Siberia. Traditionally made of tanned leather, this easy-sew garment is equally wonderful in cozy fleece, sweatshirt material, or any warm outerwear fabric.

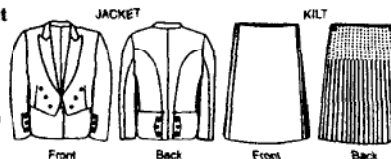
**Suggested fabrics:** Medium to heavyweight outerwear fabrics such as wool, sweatshirt jersey, or fleece.



## #154 Child's Scottish Kilt & Jacket

Child's sizes 4-14. \$16.95

Our child's Kilt pattern features a pleating template to simplify the measuring and pleating steps for creating smaller-size garments from a length of tartan. The pattern includes complete step-by-step instructions for pleating and finishing the garment, with the option of fringed or self-faced front edges. The Prince Charlie Jacket is constructed from specific pattern pieces and features authentic garment details for a formal outfit. Also included is information about wearing the kilt today and resources for finding tartan fabric, accessories, Scottish event calendars, and more. **Suggested fabrics:** Kilt in medium-weight worsted twill tartan wool or equivalent; Jacket in suit-quality medium-weight wool or blend. Contrast fabric for the lapels, such as silk satin, is optional.

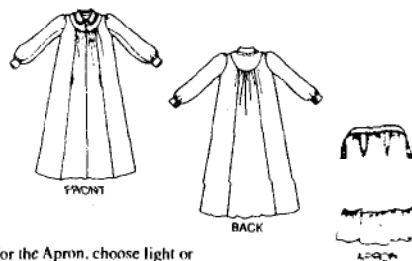


## #201 Prairie Dress

Misses Small, Average, Tall. \$16.95

Worn by the stalwart women who conquered the 19th century American prairie, this flowing dress was traditionally worn with a practical apron. With or without the apron, mid-calf or ankle-length, the dress is feminine and comfortable. Instructions for vintage embroidered finishing touches are included. **Suggested fabrics:** For the Dress, choose soft fabrics such as

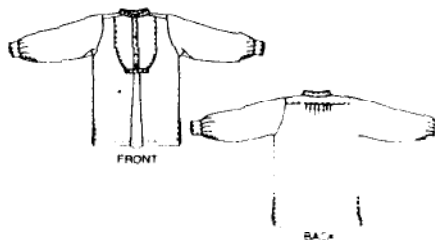
calico, gingham, muslin, lightweight cotton, rayon, or wool challis. For the Apron, choose light or medium-weight cotton such as gingham, broadcloth, or muslin.



## #202 Victorian Shirt

Misses 6-22; Men's 32-46. \$14.95

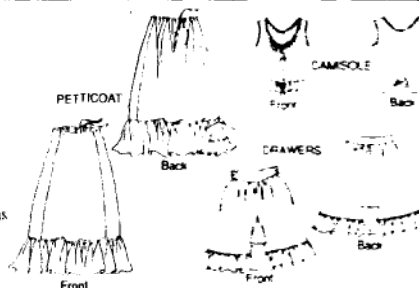
This bib front dress shirt was fashionable for men in the 1870s and is still elegant today. A perfect companion with a vest or as a woman's oversized tunic or nightshirt. Pattern includes instructions for finishing touches. **Suggested fabrics:** Shirting weight fabrics such as broadcloth, gingham, muslin, or lightweight cotton flannels.



## #203 Edwardian Underthings

Extra Small to 3X Large. \$16.95

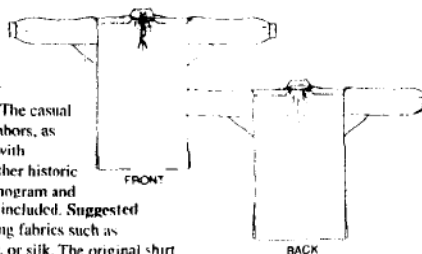
Three charming "unmentionables" from the Edwardian bride's trousseau. The camisole, petticoat, and drawers make lovely undergarments or the prettiest summer outerwear. Pattern includes instructions for crocheted edging, lace insertion, and decorative embroidery stitches. **Suggested fabrics:** Fine cottons or blends such as lawn, batiste, broadcloth, muslin, or silk. Petticoat can also be made of taffeta.



## #204 Missouri River Boatman's Shirt

Misses 6-20; Men's 34-48. \$14.95

This roomy pullover work shirt was worn by hard-working raftsmen and fur traders on the rivers of 1800s America. The casual style is perfect for all types of today's labors, as well as pleasures. This shirt is popular with historical reenactors at Civil War and other historic events. Instructions for cross-stitch monogram and needle-lace godet for front opening are included. **Suggested fabrics:** Light or medium-weight shirting fabrics such as broadcloth, homespun, linen, chambray, or silk. The original shirt was made of handwoven linen.



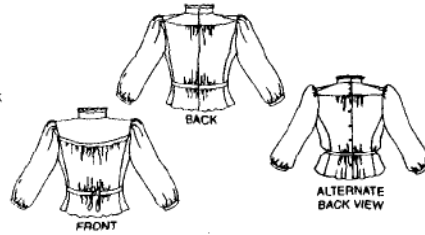




### #205 Gibson Girl Blouse

Small to 3X Large. \$14.95

The Gibson Girl was the ideal of feminine beauty at the turn of the 20th century, and by 1905, the Sears Roebuck catalogue offered 150 versions of this blouse. The high collar, back buttoning yoke style is still just as flattering today. Instructions for optional tucks and lace insertion included. **Suggested fabrics:** Soft lightweight fabrics such as batiste, lawn, muslin, silk, gingham, or calico.



### #206 Quilted Prairie Skirt

Misses 6-16. \$14.95

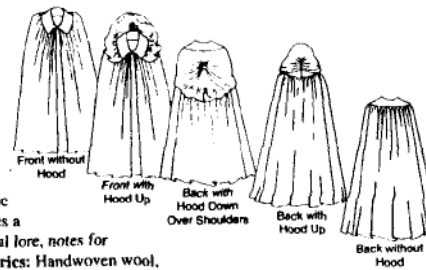
This quilted petticoat was a treasured item in an 18th-century wardrobe, whether elaborately Victorian or simply calico. Today, it makes a lovely all-season skirt. Ankle- or calf-length, the skirt is softly gathered into a waistband, and has a placketed side opening and optional hem ruffle. Quilting design transfers are included. **Suggested fabrics:** Lightweight cotton blends, wool challis, silk, satin, taffeta.



### #207 Kinsale Cloak

One size for men and women (finished length from center back neckline to hemline is 55"/139cm). \$16.95

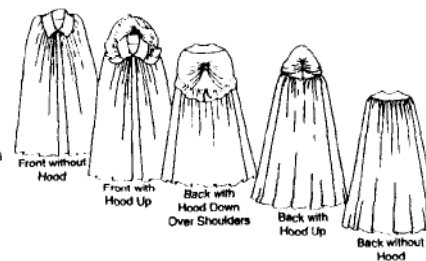
This billowing full-length cloak was a tradition in rural Ireland and can still be seen today in West County Cork, and at historic reenactments everywhere. The romantic garment fastens at the neck and features a detachable loosely-fitted hood. Pattern includes fascinating historical lore, notes for handweavers, and instructions for finishing touches. **Suggested fabrics:** Handwoven wool, wool, velvet, corduroy, poplin, denim, chintz, or weather-treated fabrics.



### #208 Kinsale Cloak for Young Maidens

Girls 2-12. \$16.95

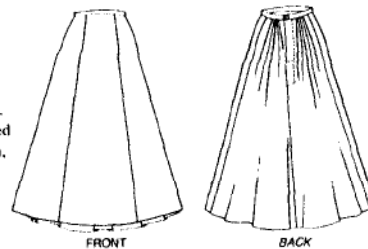
The little sister to Folkwear's best-selling romantic cloak for adults (#207 Kinsale Cloak). Full-length garment fastens at the neck and features a detachable, loosely fitted hood. Pattern includes historical lore, notes for handweavers, and instructions for finishing touches. **Suggested fabrics:** Velvet, corduroy, denim, wool, handwoven fabrics, heavyweight silk, microfiber.



### #209 Walking Skirt

Small to 3X Large. \$14.95

As the Victorian age drew to a close at the beginning of the 20th century and the Edwardian age dawned, women entered the arenas of sports and the professions. This was the skirt they wore, because it was comfortable and yet unencumbered by bustles and hoops. Full-length or street-length, with five gores. Pattern includes instructions for decorative cutwork embroidery (Brodrie Anglaise). **Suggested fabrics:** Medium to heavyweight cottons and blends, linen, silk, lightweight wool, thin-wale corduroy, or velvet.

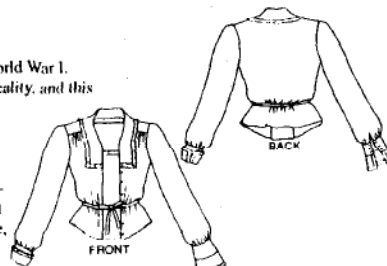


### #210 Armistice Blouse

Misses. \$14.95

S-XL

This blouse dates from 1918, at the end of World War I. Fashion was in transition from frills to practicality, and this blouse blends the two beautifully. Make it as plain or fancy as you like. The center front panel can be lacy, pintucked, or plain, the collar and cuffs can be embellished in many ways. Pattern includes instructions for draw-thread work. **Suggested fabrics:** Lightweight fabrics such as gauze, batiste, voile, georgette, or other light cottons; silk, rayon, or blends.



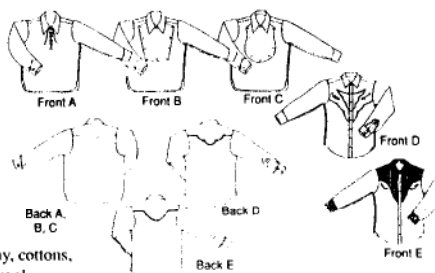
FOLKWEAR.  
patterns with timeless style



## #212 Five Frontier Shirts

Misses 8-16; Men's 36-46. \$19.95

Choose one of these traditional Western shirts for the cowboy or cowgirl in you, and sew up the five different variations for every day of the week: lace-front, square bib, shaped bib, contrast yoke, and traditional bull's-head yoke. Pattern includes historical information and instructions for piped trim and "smile" pockets. **Suggested fabrics:** Light to medium-weight fabrics such as chambray, cottons, silks, calico, corduroy, flannel, denim, wool.

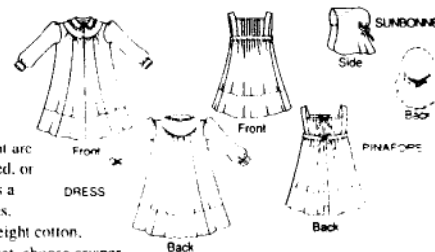


## #213 Child's Prairie Dress & Pinafore

Girls 2-10. \$16.95

This dress is just like big sister #201 Prairie Dress, but with a sweet pinafore that fits over the dress instead of an apron. The Dress yoke and pinafore front are perfect for tucked, embroidered, smocked, or beaded embellishment. Also included is a period Sunbonnet to protect tender faces.

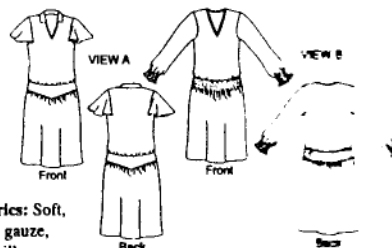
**Suggested fabrics:** Light to medium-weight cotton, rayon, wool, or blends. For the Sunbonnet, choose crisper fabrics in cotton or blends.



## #214 1927 Tea Frock

Misses 8-14. \$16.95

The "Genuine Philippine Hand Embroidered" frocks of the 1920s were all the rage among women too busy to stitch. This easy-sew style features a flattering dropped waist and optional smocking. Pattern includes instructions for smocking and embroidery stitches, as well as a full-size embroidery design motif. **Suggested fabrics:** Soft, light to medium-weight fabrics such as cotton gauze, crepe, batiste, voile, georgette, rayon challis, silk.

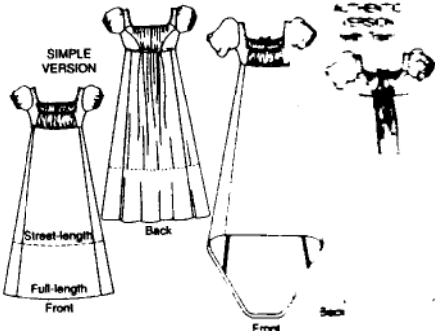


## #215 Empire Dress

Misses 6-16. \$14.95

This high-waisted dress known today as "empire" was worn in the period following the French Revolution in the late 1700s. The revealing style, requiring few undergarments, reflected a desire to return to simpler, classical Grecian dress after the excesses of the European nobility. Narrow bodice is gathered into a skirt that is slim in front and full in back.

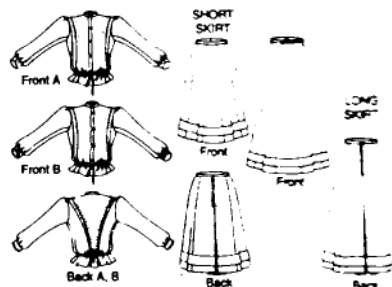
The optional full-length train and sleeve details make it perfect for a bridal fashion. **Suggested fabrics:** Soft, lightweight or medium-weight fabrics such as cotton gauze, batiste, dotted Swiss, rayon challis, silk, very lightweight silk velvet with drape.



## #216 Schoolmistress' Shirtwaist & Skirt

Misses 8-14. \$16.95

Based on the vintage uniform of the 19th century schoolmarm, this two piece outfit features a classic "shirtwaist" or blouse with beautifully different scalloped front opening and flattering princess lines. Wear it with the sweeping seven-gore skirt with optional bias trim. **Suggested fabrics:** Light to medium-weight soft or crisp fabrics such as cotton broadcloth, poplin, or denim; silk; linen; or blends. The Skirt can also be made from light to medium-weight wool, corduroy, or velveteen.

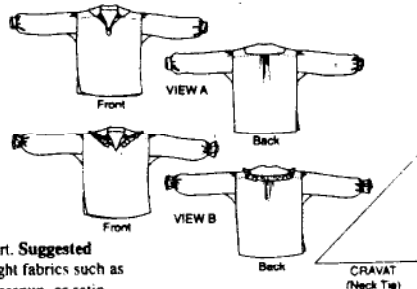


## #217 Poet's Shirt

Misses 6-16; Men's 34-44. \$14.95

This romantic shirt dates from the 1820s, when such poets as Byron, Shelley, and Keats wore their collars open in defiance of conventional fashion. The easy-sew garment is equally poetic for men or women and can be made with plain or ruffled collar and cuffs. Pattern includes historical lore and instructions for authentic detailing. This is a favorite for

men's Medieval/Renaissance costume and contemporary wedding shirt. **Suggested fabrics:** Light to medium-weight, soft or crisp shirting or blouse-weight fabrics such as cotton, linen, silk, or blends, in challis, crepe, batiste, broadcloth, homespun, or satin.

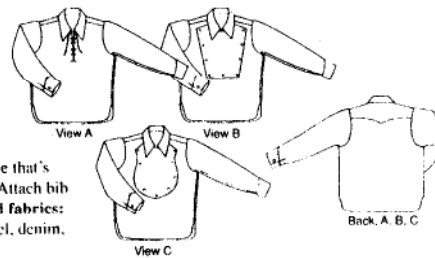




### #218 Child's Frontier Shirt

Child's 4-14. \$16.95

For young boy and girl buckaroos, this classic Western shirt has three different looks: lace-up front (View A), Cavalry-style bib front (View B), or Fireman's bib front (View C). Shirt has pointed collar and shaped back yoke that's great for contrasting or pieced fabrics. Attach bib fronts with buttons or snaps. **Suggested fabrics:** Light to medium-weight cottons, flannel, denim, chambray, corduroy.

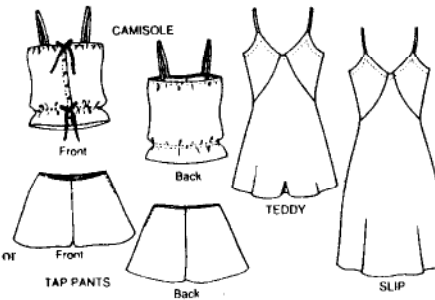


### #219 Intimacies 8-22

Misses 8-22. \$14.95

This treasure chest of lingerie styles from the 1920s and 1930s includes a camisole, tap pants, bias teddy, and slip. Depending on fabric choice, they can be made for under-garment pleasure or sassy summer outerwear. Pattern includes instructions for lace appliqué, filet crochet lace, and decorative ribbon flowers. **Suggested**

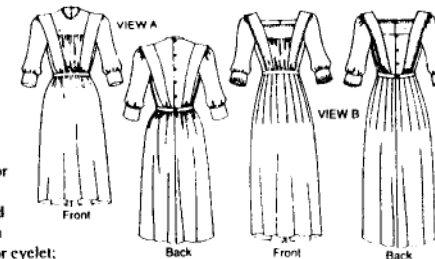
**fabrics:** Lightweight, soft fabrics of silk, cotton, rayon, synthetics, or blends such as crepe, challis, batiste, voile, or satin.



### #220 Garden Party Dress

Misses 8-14. \$14.95

This pretty fashion from the post-Edwardian era of the early 1900s features flattering princess lines, high or low neckline, gathered or pleated skirt, and a variety of embellishment options. The center front panel, side flanges, and cuffs are all candidates for lace detailing, color blocking, or inventive fabric treatments. **Suggested fabrics:** Soft, lightweight fabrics such as cotton batiste, voile, lawn, gauze, or eyelet; rayon challis; silks; wool challis, or blends.

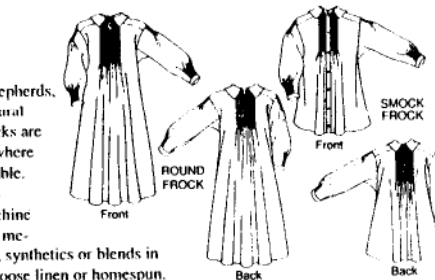


### #221 English Smock

Children's 2-12; Misses 6-20; Men's 30-42. \$16.95

A truly universal garment worn by shepherds, butchers, bakers, farmers, and other rural laborers in Old England. Today, smocks are favored by fashionable people everywhere and made out of every fabric imaginable. Long and short versions can be hand-smocked or "mock-smocked" by machine with elastic. **Suggested fabrics:** Soft me-

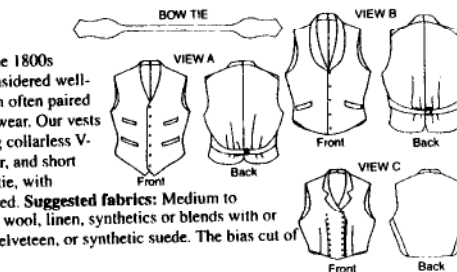
dium-weight fabrics with some drape such as cotton, rayon, wool, synthetics or blends in challis, broadcloth, corduroy, or flannel. For an authentic look, choose linen or homespun.



### #222 Vintage Vests

Misses 6-16; Men's 36-44. \$16.95

Victorian gentlemen at the end of the 1800s needed a vest or waistcoat to be considered well-dressed, and smart Victorian women often paired vests with walking skirts for street wear. Our vests offer a variety of stylings, including collarless V-neck, bias-cut vest with shawl collar, and short front-darted style. Traditional bow tie, with instructions for tying, is also included. **Suggested fabrics:** Medium to heavyweight fabrics of cotton, silk, wool, linen, synthetics or blends with or without nap, such as brocade, velvet, corduroy, canvas, piqué, velveteen, or synthetic suede. The bias cut of the shawl-collar vest is especially suitable for stripes or plaids.

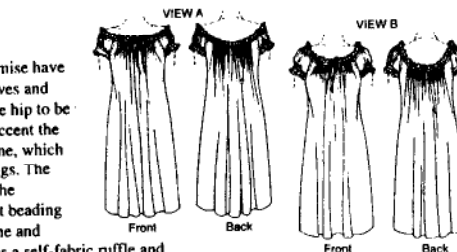


### #223 A Lady's Chemise

Extra Small to 3X Large. \$16.95

Both versions of our flattering chemise have short gathered and ruffled cap sleeves and can be cut low knee-length or at the hip to be worn as a blouse. Delicate pleats accent the center front and back of the neckline, which is adjustable with ribbon drawstrings. The neckline of View A drops just off the shoulder and uses purchased eyelet beading and lace or eyelet ruffles at neckline and

sleeve. The neckline of View B sits on the shoulder and features a self-fabric ruffle and casing for the ribbon drawstring. Instructions and alphabet designs for a Victorian monogram are included. **Suggested fabrics:** Lightweight cottons and blends such as batiste, lawn, voile, gauze, or eyelet; handkerchief linen; silks such as crepe de chine; rayon challis. Originals were made of lightweight muslin or linen.



FOLKWEAR<sup>®</sup>  
patterns with timeless style

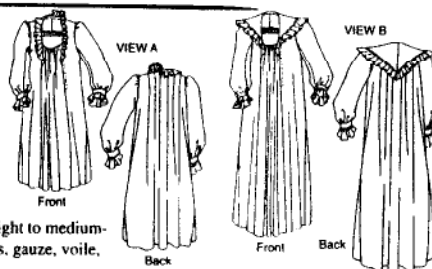


### #224 Beautiful Dreamer

Misses 6-20. \$14.95

Since the beginning of the 20th century, this pretty gown has brought on sweet dreams at night. Just as delightful when made as a feminine day dress. Long or short length, with ruffled neckline or wide triangular ruffled collar. #225 Childhood Dreams is a perfect match for a favorite little girl. **Suggested fabrics:** Light to medium-

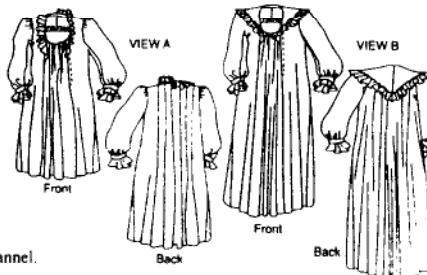
weight cotton, linen, rayon, silk, or blends such as lawn, dotted Swiss, gauze, voile, muslin, challis, broadcloth, or flannel.



### #225 Childhood Dreams

Girls 2-12. \$14.95

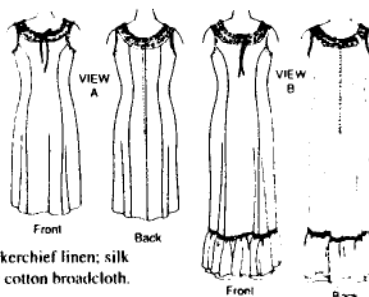
For a special little girl, here's a scaled down version of #224 Beautiful Dreamer, the Victorian lady's favorite nightgown. An ideal children's style for daytime and special occasions, too. **Suggested fabrics:** Light to medium-weight cotton, linen, rayon, silk, or blends such as lawn, dotted Swiss, gauze, voile, muslin, challis, broadcloth, or flannel.



### #226 Princess Slip

Misses 6-16. \$14.95

This sleek garment freed early 20th century women from traditional undergarments, which were both elaborate and constricting. Classic princess lines give this slip a smooth shape and flattering fit, whether worn underneath other garments or as a lightweight summer dress. A natural companion for #227 Edwardian Bridal Gown. **Suggested fabrics:** Light to medium-weight cotton and blends such as batiste, lawn, challis, eyelet, or broadcloth; rayon challis; handkerchief linen; silk broadcloth. Original garments were made of fine cotton broadcloth.



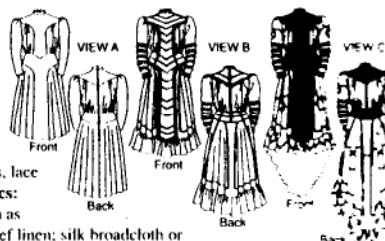
### #227 Edwardian Bridal Gown

Misses 6-16. \$19.95

This is Edwardian charm at its best. A perfect vintage wedding dress with high neck, leg o'mutton sleeves, and flounced train.

Simplified version can be a coordinated bridesmaid dress, dancing dress, or everyday fashion. Pattern includes instructions for tucks, lace insertions, and a simple veil. **Suggested fabrics:** Light to medium-weight cotton or blends such as batiste, lawn, voile, or broadcloth; handkerchief linen; silk broadcloth or

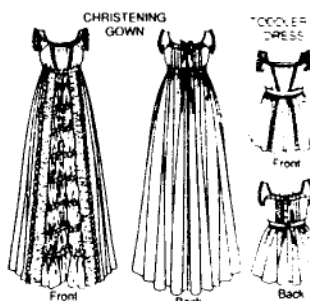
crepe de chine; satin; taffeta. Original garments were made of cotton batiste. Simplified version can also be made from rayon or wool challis. Stripes, plaids, one-way prints, or diagonals are not suitable.



### #228 Victorian Christening Gown & Toddler's Dress

Infants 2-9 months; Toddlers 1-4. \$14.95

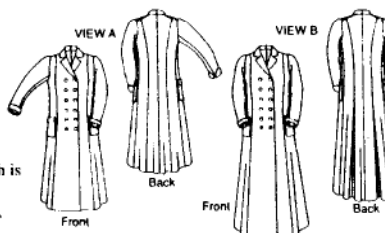
Create a cherished heirloom from this pattern based on an 1848 original. Tiny petal sleeves, drawstring closures, and gathered center panel with lace insertion make this a guaranteed collectible. Toddler's dress has similar styling. Pattern includes instructions for French hand sewing techniques. **Suggested fabrics:** Sheer or lightweight cotton or blends, such as batiste, lawn, organdy, or voile. For Toddler's Dress, choose lightweight cotton or blends, such as calico, dotted Swiss, lawn, broadcloth, or challis.



### #230 Model T Duster

Misses 8-16. \$16.95

When early 20th century women began motoring across America in the new automobiles, they needed something to protect their fancy finery from the dust and grime of the rough roadways. The sensible and fashionable solution was this loose-fitting, unlined, Princess-seamed duster, which is still stylishly sleek today. **Suggested fabrics:** Heavyweight cotton or blends, such as poplin, corduroy, or denim; suit-weight linen; wool gabardine or blends; water-repellent fabrics.

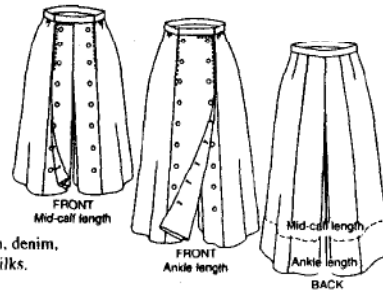




### #231 Big Sky Riding Skirt

Misses 8-18. \$16.95

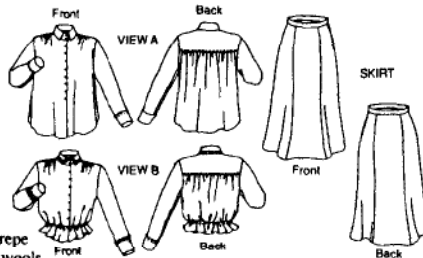
Bring out the cowgirl in you! Equestrian women of the early 20th century, who were determined to ride astride rather than side-saddle, wore these divided skirts. An ingenious fashion, with front panel that buttons one way for a skirt and the other way for pants. Pattern is derived from a skirt worn by legendary rancher and rodeo rider, Fannie Sperry Steele. **Suggested fabrics:** Medium to heavyweight cottons and blends such as poplin, denim, gabardine, corduroy, linen; light to medium-weight wools; suiting weight silks.



### #232 Wall Street Blouse & Skirt

Misses 6-16. \$16.95

Classic career ensemble from Wall Street's 1920s heyday. Our version features a softly styled blouse with high collar similar to men's shirt fashions of the time, and a six-gore skirt with swishy flared hemline. **Suggested fabrics:** For the Blouse, choose light-weight to shirting-weight cottons or blends such as voile, batiste, lawn; handkerchief linen; silks such as crepe de chine or satin; rayon challis. For the Skirt, choose medium-weight wools such as gabardine or crepe; linen; raw silk; cottons or blends.



### #233 Glamour Girl Dress

Misses 6-16. \$14.95

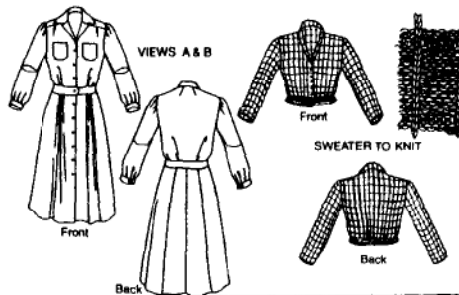
Glamour oozed in Hollywood in the 1930s and 1940s, and this is the daytime dress the starlets wore. It emphasizes curves, drapes elegantly, and lends an air of discreet sexiness. The close-fitting bodice is visually cinched in with front waistline ties, and fits smoothly into a flared skirt. Shoulder pads lend that commanding air to any aspiring celebrity. **Suggested fabrics:** Light to medium-weight fabrics with drape, such as silk or rayon crepe, satin, challis, soft cotton.



### #235 Sporty Forties Dress & Sweater

Misses 6-16. \$16.95

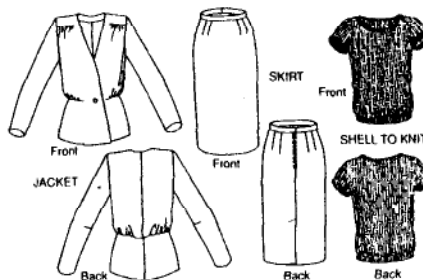
Stylish 1940s shirtwaist fashion with pleated bodice, long or short sleeves, and full button-front opening. Pattern includes knitting instructions for shawl-collar cardigan. **Suggested fabrics:** Medium-weight cottons, linens, blends, rayons, and silks.



### #236 Sophisticated Lady

Misses 6-16. \$19.95

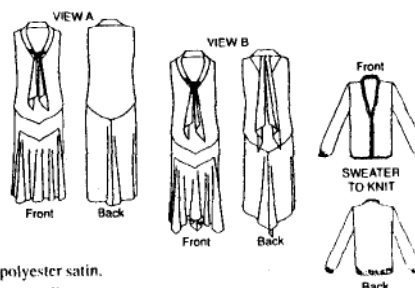
Classy 1930s two-piece suit and knitted shell. Unlined Jacket has soft gathering at shoulders and high hip, slightly padded shoulders, and long slender sleeves. Straight Skirt has center-back kick pleat. Basketweave stitch shell has round neck and cap sleeves. **Suggested fabrics:** Light to medium-weight suiting fabrics in silk, linen, wool, or blends.



### #237 Tango Dress

Misses 6-16. \$16.95

The tango craze swept the country in the 1920s, and the exotic dance required fashions that dipped and swayed with the music. This dramatic fashion has an optional shaped back hemline and draped scarf for sensuous movement. The dress can also be made more conservatively, and worn with a cardigan sweater (knitting instructions included). **Suggested fabrics:** Light-weight fabrics with drape, such as silk or polyester satin, charmeuse, crepe, challis, lightweight linen or cotton.



FOLKWEAR  
patterns with timeless style

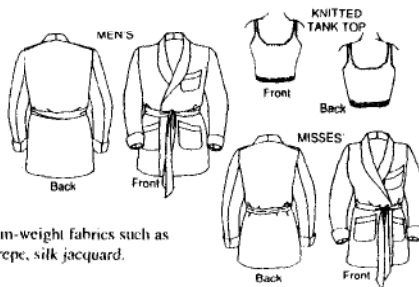


## #238 Le Smoking Jacket

Misses 6-16; Men's 34-44, \$16.95

Smoking jackets symbolized sophistication during the 1920s and 1930s, both on the silver screen and in real life. Our classy version features contrasting or quilted lapels, cuffs, and pocket trim.

Pattern includes instructions for women's knitted tank top to wear underneath. **Suggested fabrics:** Medium-weight fabrics such as velvet, velveteen, brocade, corduroy, crepe, silk jacquard.

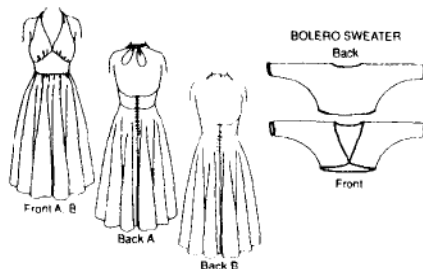


## #239 Blonde Bombshell

Misses 6-16, \$16.95

Celebrate your femininity in this full-skirted, dramatic style from the 1950s. Make it in colorful cotton for a summer sundress or shimmering brocade for an evening party any time of the year. Pattern includes instructions for knitted bolero sweater to wear on top.

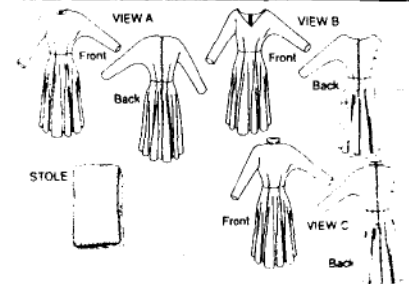
**Suggested fabrics:** Light to medium-weight fabrics such as cotton, silk, or blends.



## #241 Fifties Fit & Flair

Misses 6-16, \$16.95

After World War II, designers gave up fabric-conserving styles in favor of generous full skirts for ready-to-wear. This classic dolman-sleeve dress with full skirt offers three neckline options: jewel, V-neck, and turtleneck. Pattern includes instructions for knitted stole to drape seductively around the shoulders. **Suggested fabrics:** Soft wools such as crepe, challis, jersey; medium-weight taffeta, cotton, or blends.

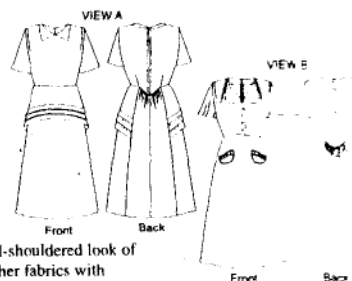


## #249 1930s Day Dress

Misses Extra Small to 3X-Large, \$19.95

Our 1930s Day Dress uses fabric economically, yet still looks chic and trendy. **View A** features round neck with collar points and peplum cleverly cut on the straight grain but with the slimming look of a bias cut. **View B** is more casual, with buttoned front, flounce collar and sleeves, and eyelash pockets. Both dresses have a flattering dropped waistline in back, back zipper, slightly flared skirt, and unpressed tucks

in front that eliminate the need for bust darts and create the fashionable broad-shouldered look of the period. **Suggested fabrics:** Rayon, medium-weight silk, microfiber, or other fabrics with drape. **View B** is particularly attractive in small-print fabrics with sheer flounces.



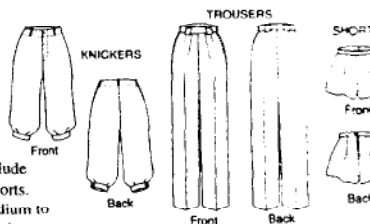
## #250 Hollywood Pants

Misses 8-14, \$19.95

Movie stars Marlene Dietrich and Katharine Hepburn wore trousers with exceptional attitude before pants were socially acceptable, and made them essential components of every stylish woman's wardrobe. Our Hollywood-inspired styles include sporty knickers, classic trousers, and kicky shorts.

**Suggested fabrics:** For Knickers, choose medium to heavyweight fabrics such as cotton, linen, wool or

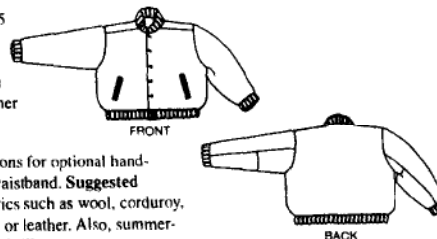
blends in broadcloth, homespun, or twill; also napped fabrics such as corduroy and velveteen. For Trousers, choose medium-weight, soft fabrics with drape such as wool gabardine or challis; also cotton or corduroy. For Shorts, choose soft or slightly crisp, medium-weight fabrics such as wool challis, cotton, linen, rayon, or blends.



## #251 Varsity Jacket

Misses and Men's XS, S, M, L, \$16.95

This classic 1950s sport jacket was coveted by all fashion-conscious Americans of the time. The traditional model featured a wool body with leather sleeves, but it looks just as great in sandwashed silk, corduroy, or ethnic print cotton. Pattern includes instructions for optional hand-knitted ribbing for cuffs, collar, and waistband. **Suggested fabrics:** Medium to heavyweight fabrics such as wool, corduroy, gabardine; heavyweight cotton; suede or leather. Also, summer-weight fabrics such as rayon or washed silk.

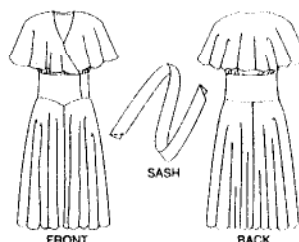




### #252 Beach Pyjamas

Misses 6-20, \$16.95

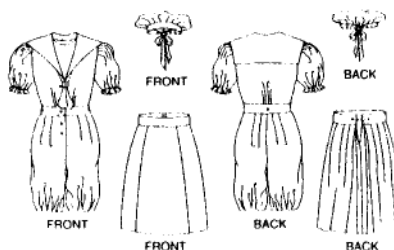
This casual, flowing style was the height of summer resort fashion in the 1920s and 1930s. Our one-piece version with carefree sash features a full shawl collar that wraps in front and falls gracefully over the shoulders in back. Wide palazzo pants give the appearance of a skirt. **Suggested fabrics:** Light to medium-weight fabrics with soft drape such as rayon, silk, or challis; also crisp, lightweight cotton or linen.



### #253 Vintage Bathing Costume

Misses 6-20, \$19.95

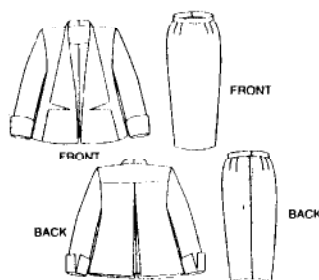
In 1890, when women were just beginning to venture into the traditional men's sports arena, a bathing outfit could weigh as much as 20 pounds and cover up as much as full street dress. Our lighter-weight version features a knee-length gores skirt that buttons over a one-piece romper, topped off with a jaunty cap. **Suggested fabrics:** Medium-weight cottons, linens, blends. Original garments were made in light to medium-weight wools.



### #255 Swing Suit

Misses Extra Small to Extra Large, \$19.95

This classic 1950s silhouette has timeless appeal. The trapeze jacket's wide lapels are stitched down to form pockets. The pencil skirt provides a nice contrast to the jacket's fullness. **Suggested fabrics:** Medium-weight suiting fabrics with body such as wool, silk, knits, linen, or blends. Make jacket lapels and cuffs from contrasting fabric or embellish them with machine embroidery.



### #256 At The Hop

Misses 6-20, Girls 4-14, \$19.95

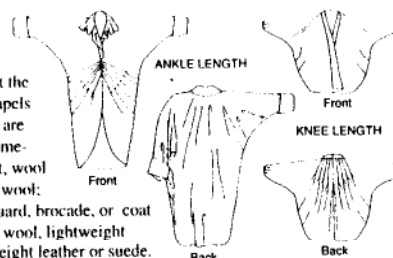
Bebop 1950s circle skirt, blouse, and knitted sweater for women and young girls. Poodle and alpine applique designs included. **Suggested fabrics:** For skirt, felt (the traditional choice), cotton, rayon, wool gabardine, blends. For blouse, light to medium-weight cotton, silk, rayon, blends.



### #260 Sunburst Cocoon Coat

Misses Extra Small to Extra Large, \$19.95

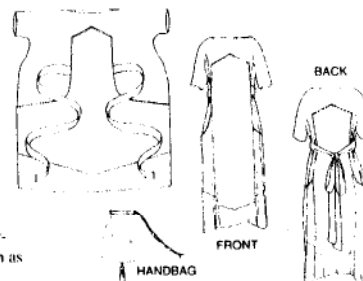
Classic 1920s ankle-length coat with contrast collar and cuffs, and sunburst pleats at the hipline, and knee-length coat with turn-back lapels and radiating pleats at center-back. Both coats are fully lined. **Suggested fabrics:** For long coat, medium-weight silk or rayon, silk or rayon velvet, wool or cotton jacquard, or light to medium-weight wool; contrast collar and cuffs from satin, satin jacquard, brocade, or coat fabric. For short coat, drapery velvet, cotton or wool, lightweight cotton or wool jacquard, silk shantung, lightweight leather or suede.



### #261 Paris Promenade Dress

Misses Extra Small to Extra Large, \$16.95

Easy-to-sew, easy-to-wear pullover dress from about 1920 is attached to bib-shaped overdress, then shaped at the waist by a self-fabric sash or purchased decorative cord. Vintage-style drawstring handbag completes the look. Pattern includes instructions for decorative tassels at ends of dress sleeves and bottom of handbag. **Suggested fabrics:** Light to medium-weight fabrics with drape, such as silk, silk velvet, rayon, feather-



weight cotton, or jersey. For a more defined look, fabrics with more body, such as crisp cotton, lightweight linen, and silk taffeta.

FOLKWEAR®  
patterns with timeless style

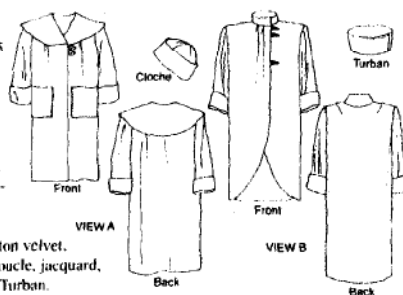




### #262 Spectator Coat

Misses Extra Small to Extra Large. \$22.95  
Slenderizing coats feature the classic 1920s' straight-sided silhouette. Cape-Collar Coat with large patch pockets provides ample space for creative embellishment, with Cloche hat decorated to match. Stand-Up Collar Coat has two soft pleats in front, shaped hem, and coordinating Turban. Both coats are fully lined.

**Suggested fabrics:** For Cape-Collar Coat and Cloche, heavyweight silk twill, medium to heavyweight wool, cotton velvet, boucle, corduroy. For Stand-Up Collar Coat, heavyweight silk twill, boucle, jacquard, wool, velvet, microfiber; also faux fur, boiled wool, suede, leather for Turban.

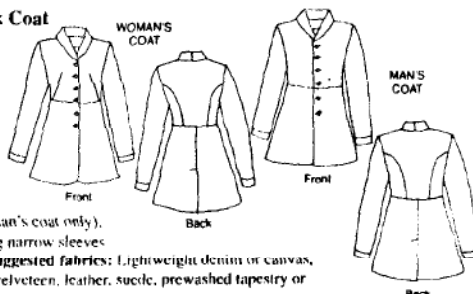


### #263 Countryside Frock Coat

Misses Extra Small through Extra Large; Men's Small through XX-Large. \$19.95

Perfect choice for historical military or Western reenactment, as well as an elegant contemporary look. Single-breasted unlined coat features shawl collar, princess seams in back, waist darts in front (woman's coat only), slightly lowered waistline, long narrow sleeves

with band cuffs, and above-knee peplum with back vent. **Suggested fabrics:** Lightweight denim or canvas, light- to medium-weight wool, linen, hemp, silk, brocade, velveteen, leather, suede, prewashed tapestry or upholstery fabric.

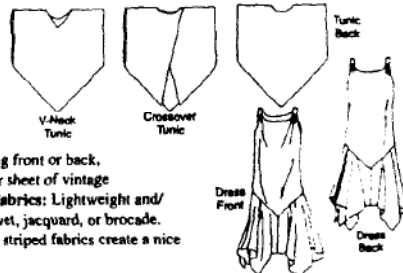


### #264 Monte Carlo Dress

Misses Extra Small to Extra Large. \$19.95

This sleek dress in the 1920s "flapper" style has two coordinating tunic tops for a versatile ensemble of garments. Drop-waist dress with narrow straps and shaped handkerchief hem. Simple-sew pullover and crossover tunic tops can be worn facing front or back, belted or not. Pattern includes heat transfer sheet of vintage design motifs for embroidery. **Suggested fabrics:** Lightweight and/or sheer silk, rayon, polyester, novelty velvet, jacquard, or brocade.

Dress skirt is attractive in multiple layers of chiffon or georgette. Sheer striped fabrics create a nice graphic effect in the Crossover Tunic.

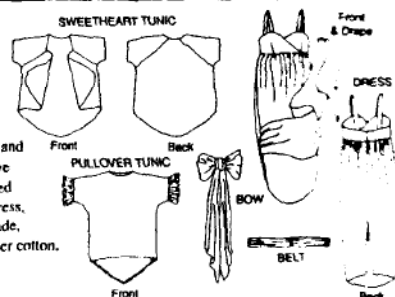


### #265 Afternoon Tea Dress

Misses Extra Small to Extra Large. \$19.95

Inspired by the Edwardian tea gowns of 1912-1913, this Dress features an optional drape that is arranged at center front and held in place with the shirred Belt. Bow can be attached at front or back. Sweetheart Tunic wraps in front and is held in place with Belt or Bow; ruffled-sleeve Pullover Tunic can be worn front or back, belted or hanging straight. **Suggested fabrics:** For Dress, Drape, Belt, Bow, silk or polyester satin, brocade,

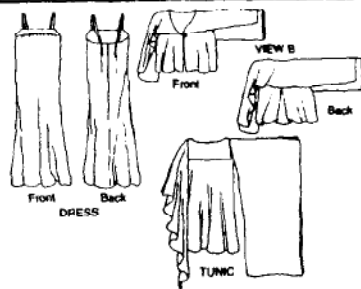
jacquard; lightweight silk or rayon velvet. For Tunics, lightweight and/or sheer cotton, silk, rayon, polyester; lace; novelty velvet.



### #266 Greek Island Dress

Misses Extra Small to Extra Large. \$19.95

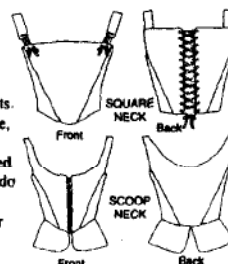
Free-flowing Dress is an easy-sew sheath with plain yoke that is perfect for embellishment. Jacket has a center back godet to add flare, extended collar, and single-button front closure. Simple Tunic has a sailor collar and free-floating sleeve panels. **Suggested fabrics:** For Dress, silk or polyester crepe de chine or charmeuse. For Tunic and Jacket, soft, filmy fabrics such as chiffon, georgette, gauze, voile, novelty cut velvet.



### #267 M'Lady's Corset

Misses Extra Small to 3X-Large. \$16.95

Two corsets representative of late 16th-century and early 17th-century garments worn in the royal courts and in daily peasant life. Square-neck corset laces in back with purchased or handmade eyelets. Scoop-neck corset fastens in front with purchased hook-and-eye tape, and has a peplum like the waistline tabs of 16th-century doublets. Both versions feature Elizabethan era dropped front waist. **Suggested fabrics:** For outer layer, medium to heavyweight stable fabrics that do not drape, such as silk, satin, brocade, damask, shantung, dupioni; cotton damask, brocade; linens and blends. For lining, same as outer layer or slightly lighter-weight equivalent. For supporting inner layers, see pattern.

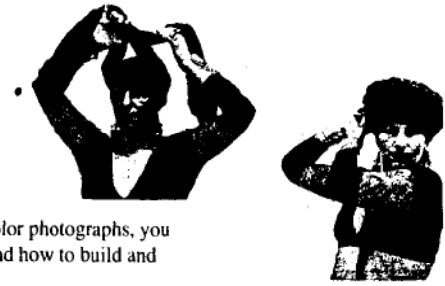




### #044 Tribal Style Headdress & Makeup Booklet

\$9.95

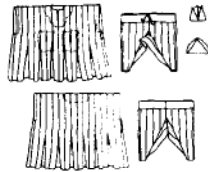
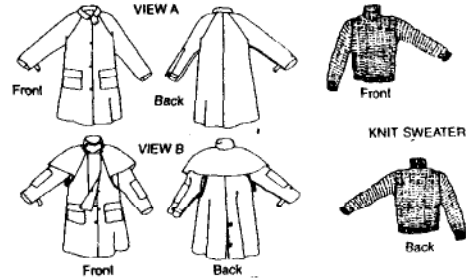
Use this guide as a starting point for expressing your exotic individuality and creating an electrifying tribal persona. Carolena Nericcio, of FatChanceBellyDance in San Francisco, shows you how to transform your everyday look into a sensational presence. With step-by-step tips and color photographs, you will learn how to master stage makeup techniques and how to build and decorate an impressive head wrap.



### #138 Child's Australian Drover Coat

Children's sizes 6x-14. \$19.95

This child-size version of #137 Australian Drover's Coat features all the authentic details of the adult coat, plus a turtleneck sweater to knit. **Suggested fabrics:** Same as adult coat.

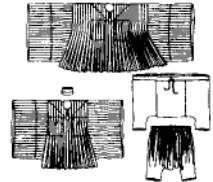
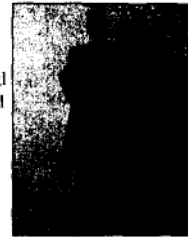


### #155 — Yoruba Tunic & Trousers

These traditional Nigerian garments are made from strip-woven fabric, and their loose silhouette is very comfortable to wear. Custom yardage can be assembled from leftover fabric scraps, handwoven strips, or purchased material torn into strips and re sewn together. Pattern includes technical information about strip-weaving and traditional embroidery. All sizes. \$19.95

### #156 — West African Robe & Trousers

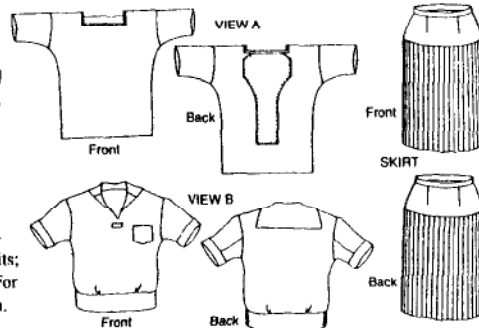
A traditional West African robe with beautiful draped sleeves, assembled from narrow strips of fabric alternating with wedge-shaped insertions to add flare, and topped off with a strip-pieced cap. Pattern includes information about traditional dress, strip-weaving, and Hausa embroidery. All sizes. \$19.95



### #211 Two Middies & Skirt

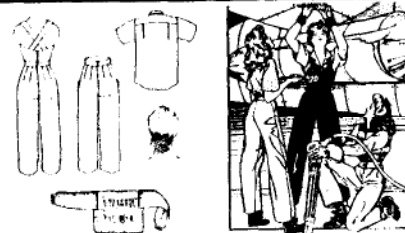
Misses 6-16. \$14.95

The Middy, adapted from British naval dress, was also popular in the 1920s as newly-liberated women's active sportswear. Pair either top with the slimming pleated Skirt for a contemporary ensemble. View B top makes a great man's summer pullover. **Suggested fabrics:** For tops, medium-weight cottons, blends, rayon, silk, knits; also for View B, flannel or corduroy. For Skirt, medium-weight wool, silk, linen.



### #240 — Rosie the Riveter

The heroic working women of World War II inspired this factory wardrobe of camp shirt, pleated slacks, and overalls with sweetheart bib. Pattern includes historical information and instructions for knitted sweater and crocheted snood that keeps hair in place. Misses 6-20. \$19.95



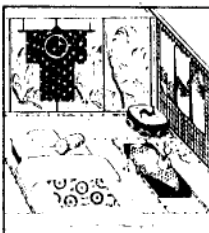
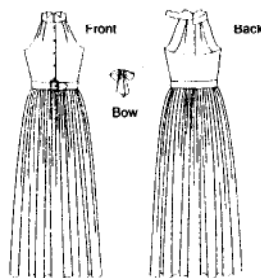
FOLKWEAR  
patterns with timeless style



### #258 Town & Country Dress

Misses 6-20. \$19.95

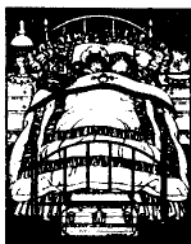
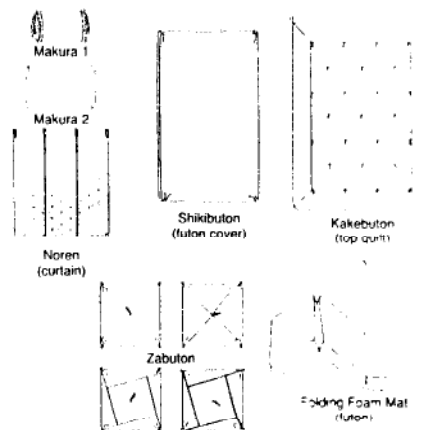
Adapted from a gown by American designer Claire McCardell, this halter Dress features wing collar, fitted bodice, gathered skirt, side zipper, on-seam pockets, and optional Bow to wear around the neck. **Suggested fabrics:** Medium-weight cotton, rayon, silk, blends.



### #305 A Japanese Interior

\$19.95

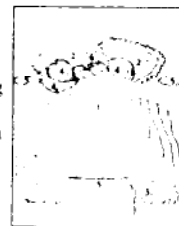
This collection of traditional Japanese pieces can be tastefully incorporated into any decorating scheme. Pattern includes floor cushions (*zabuton*), sleeping pillows (*makura*), futon, futon cover (*shikibuton*), top quilt (*kakebuton*), decorative curtains (*noren*), and tips for adapting any kimono pattern (such as Folkwear #113) for a quilted sleeping kimono (*yogi*). Information about traditional handwork and dyeing techniques also included. **Suggested fabrics:** For Cushions and Futon Covers, medium to heavyweight cottons, silks, or blends. For Noren, light to medium-weight cottons, silks, or blends.



### #302 Victoria's Boudoir

\$19.95

Opulent furnishings for the Victorian bedroom include a **Quilt Cover**, matching **Pillow Shams** with ruffled edging, and **Dust Ruffle** for twin, full, queen, and king bed sizes. The **Doily** comes in two shapes and can be enlarged for a dresser scarf. **Throw Pillows** (round, square, heart-shaped) echo the Quilt Cover design and can be down-sized for use as **Sachets**. A self-ruffled mobcap functions as a **Nightcap**, and a **Potpourri** recipe provides a Victorian scent of bygone flowers. Pattern includes designs and instructions for authentic embroidery and cutwork, plus a Victorian alphabet for monograms. **Suggested fabrics:** Light or medium-weight cotton or blends; also silk and satin for dust ruffle, nightcap, pillows, and sachets; also velveteen or taffeta for pillows and sachets. Linen or medium-weight cotton for doilies.



1. Quilt Cover 2. Pillow Sham  
3. Dust Ruffle 4. Throw Pillows  
5. Doilies 6. Night Cap



### #303 English Cottage Kitchen

Pinafore/Apron in Women's Small, Medium, Large and Girl's 2-10; kitchen furnishings in various sizes. \$19.95

A Victorian treasury of kitchen linens and embellishment techniques. The **Pinafore/Apron** has a pretty ruffled bib, ruffled straps that cross in back, and a skirt that can button in back or be worn open; plus, it's sized for both women and girls. The pattern also includes **Tea and Dinner Napkins**; **Tea Towels**; **Placemats**; quilted **Oven Mitt**; **Cozys for Teapot, Biscuit basket, and Egg cup**; cutting/sewing guide for round, square, and rectangular **Tablecloths**; and a stenciled **Floorcloth**. Authentic detailing information includes stencil pattern how-to for floorcloth and wall design; quilting design motifs and how-to for



1. Pinafore 2. Apron 3. Biscuit Cozy 4. Napkin 5. Tea Towel 6. Placemat 7. Tea Cozy 8. Egg Cozy 9. Oven Mitt 10. Tablecloth 11. Floorcloth

oven mitt and cozys; cross-stitch embroidery designs and instructions for napkins and tea towel; and tatting how-to for optional handmade lace edgings. This one pattern has more how-to and design inspiration in it than many books! **Suggested fabrics:** For Pinafore/Apron, choose lightweight cottons or blends such as batiste, voile, eyelet, or organdy; lightweight silks or rayon. For kitchen items, choose soft, absorbent, washable fabrics such as cotton or linen. Biscuit cozy requires firm fabric with body.

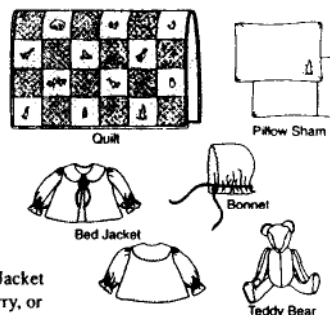


### #304 Nursery Days

Bed Jacket and Bonnet sized Newborn to 6 months. Teddy Bear 22" (56cm) high (standing). Bed linens various sizes. \$16.95

An old-timey collection of heirlooms for baby's nursery from early 1900s, including **Bed Jacket and Bonnet**; **Crib Quilt** hand-embroidered with delightful farmyard animals (designs included); matching **Pillow and Sham**; adorable **Teddy Bear** with movable parts; and **Stencil Patterns** to make a border design on the wall. Tips for embroidery, quilting, and stenciling are included. **Sug-**

**gested fabrics:** For crib items, choose tightly woven cotton, linen, and blends. For Bed Jacket and Bonnet, choose cotton, linen, and blends. For Teddy Bear, choose fake fur, plush, terry, or felted mohair like the original.





### 501 Algerian Suit



\$26.00

Originally worn by seafarers along the Barbary Coast, this suit makes a dramatic and stylish outfit for men and women today. Pattern includes a Jacket, Vest and Trousers plus instructions for optional passementerie trim decoration. Original at The Met is wool broadcloth; also wonderful in silk or any fabric with drape. Misses' and Men's sizes Extra Small to Extra Large.



### 502 Russian Cossack Uniform

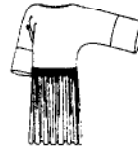


\$26.00

The original uniform at The Met is of red wool with metallic trim — identical to that worn by the Imperial Guard in Russia in the late 1800s. Collarless Coat has a full skirt and long full sleeves. Tunic has a stand-up collar, a fitted bodice and a long full skirt. Drawstring-waist trousers taper to the ankle. Beautiful in fabrics from traditional wool to silk brocade. Misses' sizes 6-20, Men's 34-48.

### 257 Twenties Day Dress

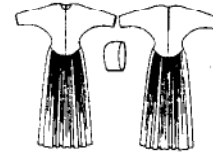
Very easy to sew and flattering on most figures. Cartridge-pleated dropped waist and full, kimono-like sleeves add elegance. Style is great all year round. Skirt and bodice are meant to be made with contrasting fabric (sleeves are cuffed with skirt fabric). Light- to medium-weight fabrics with drape are best for the skirt; almost any fabric is fine for the bodice, including velvet or brocade. Misses' sizes Extra Small to Extra Large



\$18.95



### 505 Claire McCardell Cloister Dress



\$26.00

Among American ready-to-wear designers of the 20th century, none has been so widely admired and copied as Claire McCardell. From the Costume Institute at the Metropolitan Museum of Art, the Cloister Dress, in its utter simplicity, shows why. Can look like any period from 500 years ago to 20 years from now. Misses' sizes Extra Small to Extra Large. Easy to sew.



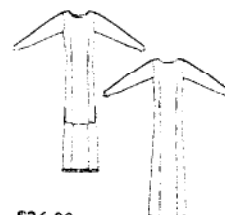
### 506 Equestriennes



A woman never looks more elegant or perfectly dressed than when she's wearing riding apparel. Mix and match this ensemble in rough linen (like the originals) or tweeds and twills. From the 1920s, the original riding attire is in the Costume Institute at The Metropolitan Museum of Art. Misses' sizes 6 to 20 Experienced sewers. \$26.00



### 507 Gallenga Gown



\$26.00

Four main pattern pieces make this beautiful dress. Easy to sew and flattering on most figure types, this dress hangs straight to the hips where it's pulled in front and back with buttons and loop closures beads close or finish the sleeves from shoulders to wrists. Eliminate the train and hem to mid calf for a chic daytime dress. Makes a magnificent wedding gown. Misses' sizes Extra Small to Extra Large

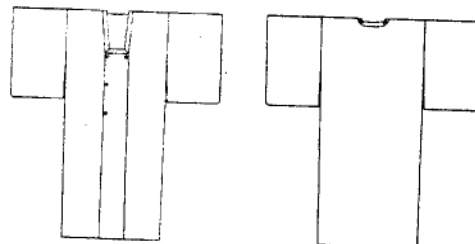
**FOLKWEAR®**  
*patterns with timeless style*



This year is Folkwear's 30th Birthday and to celebrate, we have re-published the **Bethany Dress**, a traditional Palestinian wedding dress with embroidered bodice panel (called Qabbeh). The original 1977 publication was a folded poster, but the new edition is an 8.5 x 11-inch 20 page color booklet with cutting diagrams, traditional embellishment instructions, a full-size bodice embroidery design, plus updated supply resources. There are no actual pattern pieces, but because the dress is "assembled" like a quilt from straight-sided strips, it is very easy to follow the cutting diagrams and to adjust for individual sizes. **#011 Bethany Dress, \$12.95.**



**#143 Japanee Michiyuki**, a square-neck double-breasted jacket that is worn as an artist's smock or over a formal kimono to keep it clean. Sizes include Small to 2XLarge. Price \$16.95



equivalent to:	XSmall 6-8	Small 10-12	Medium 14-16	Large 18-20	XLarge 22-24	2XLarge 26-28	3XLarge 30-32	
Bust	30½ - 31½ 78 - 80	32½ - 34 83 - 87	36 - 38 92 - 97	40 - 42 102 - 107	44 - 46 112 - 117	48 - 50 122 - 127	52 - 54 132 - 135	in. cm
Waist	23 - 24 58 - 61	25 - 26½ 64 - 67	28 - 30 72 - 77	32 - 34 82 - 87	37 - 39 92 - 97	42 - 44 102 - 107	46½ - 49 118 - 124.5	in. cm
Hip	32½ - 33½ 83 - 86	34½ - 36 89 - 94	38 - 40 97 - 102	42 - 44 107 - 112	46 - 48 117 - 122	50 - 52 127 - 132	54 - 56 135 - 142	in. cm
Back Waist Length	15½ - 15¾ 39.5 - 40	16 - 16¼ 40.5 - 41.5	16½ - 16¾ 42 - 42.5	17 - 17¼ 43 - 44	17½ - 17¾ 44.5 - 45	18 - 18¼ 46 - 46.5	18½ - 18¾ 47 - 47.5	in. cm

1905 Summer Gown

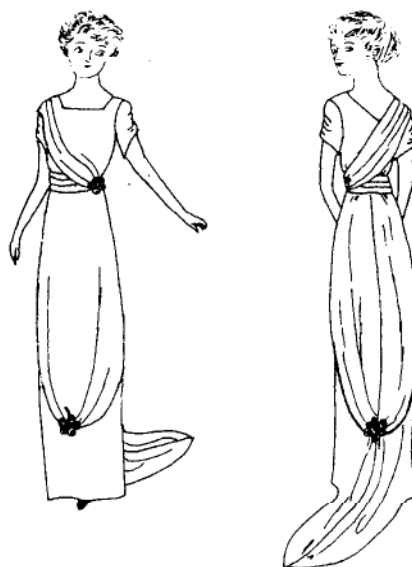


Sizes include 10-20

### PROMENADE PATTERNS

\$29.95 each

1912 Evening Gown for Dinner or the Theatre



Sizes include 10-12-14 or  
16-18-20 State size

1910-14 Gown for Dancing or Dinner



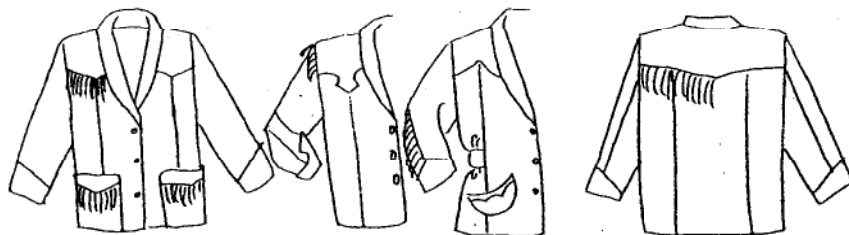
Sizes include 10-20

## News and Notes

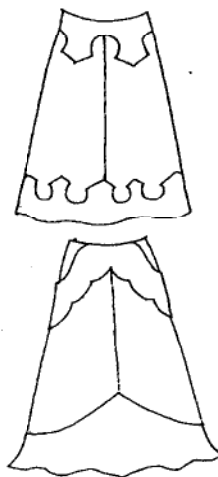
### #242 Rodeo Cowgirl Jacket



This new pattern is just about to go to the printer, which means we should have it in the warehouse in August. Adapted from the self-made costumes of early 20th century rodeo cowgirls, it is a fun jacket to make in silk, denim, velvet, or suede and then embellish with fringe, beads, Western-style studs, or embroidery. The easy-sew pattern is sized XS-2XL and has a shawl collar, several options for shoulder and cuff yoke shapes, two pocket choices, and optional belt. Retail price: \$19.95.

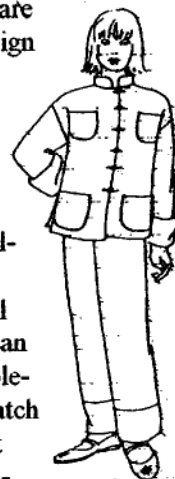


**#243 Rodeo Cowgirl Skirt** (front views at right) is now being graded into multi-size pattern pieces and will follow shortly behind the Rodeo Cowgirl Jacket pattern. This nicely flared style has two versions: with a Western-styled hem applique and different shaped hip yokes; or with a swishy hem flounce and hip yoke/pocket. Both versions have a lace-up back closure (use leather lacing or a velvet ribbon) and will look great on the dance floor or at the rodeo. Perfect for butter-soft suede, distressed denim, chiffon, or silk! Retail price: \$19.95.



### #145 Chinese Pajamas

The Rodeo Cowgirl patterns are in production, and we are now starting the design work on this new Unisex simple-sew pattern for loose-fitting drawstring pants and Chinese-style jacket with roll-back sleeves. Pant legs feature optional contrast band that can be brocade or complementary color to match jacket lining. Jacket finishes with button-loop or Asian-style frog closures. We plan to have it ready to sell in early autumn.



### Top 20 since 9/1/06

(unchanged except that #209 Walking Skirt replaced #215 Empire Dress)

- #106 Turkish Coat
- #108 Turkish Dancer
- #112 Japanese Field Clothing
- #113 Japanese Kimono
- #114 Chinese Jacket
- #118 Tibetan Panel Coat
- #119 Sarouelles
- #122 Hong Kong Cheongsam
- #129 Japanese Hapi & Haori
- #131 Tibetan Chupa & Skirt
- #134 South Asian Tops & Wraps
- #135 Jewels of India
- #139 Vietnamese Ao Dai
- #140 Flamenco Dress & Skirt
- #144 Tribal Style Belly Dancer
- #151 Japanese Hakama/Kataginu
- #152 Scottish Kilts
- #207 Kinsalc Cloak
- #209 Walking Skirt
- #264 Monte Carlo Dress



# Costume Connection

43

\$16.50 ea

All sizes are in each pattern.



JO2W- Woman's Japanese Kimono & OBI (Woman's-1650)



1102W Woman's Medieval Tunic (11th Century-1050)



1406W- Woman's Kirkle & Century Sideless- Late 14th Gown (1380)



1602W Renaissance Common (Women/Girl-1500's)



1603W- Early Tudor (Womans's-1450's)



1702W-Cavalier (Womans's-1640's)



JO1M-Man's Japanese Kimono & Hakima (Man's-1650's)



1101M-Man's Medieval Tunic and Coak (11th Century-1050)



1404M-Late 14th Century Houppelande & Liripe(men's-1350)



1601M-Renaissance Common (Men/Boys-1500's)



1602M-Early Tudor (Men's-1530)



1603M-German Puff and Slash (Man's-1500's)



1604M-Late Rennaissance Man (Man's-1500's)



1702M-Cavalier or Musketeer (Men's-1640's)

Body Measurements-Girls						Body Measurements-Women				
SIZES	6	8	10	12	14	SM	MD	LG	XL	XXL
BUST	25"	27 1/4"	29"	30 3/4"	32"	32 1/4"	36"	40"	44"	48"
	63cm	70cm	74cm	77cm	81cm	83cm	92cm	102cm	112cm	122cm
WAIST	22 1/4"	23 3/4"	24 1/4"	25 1/4"	26 1/4"	25"	28"	32"	37"	41 1/4"
	57cm	60cm	62cm	65cm	67cm	62cm	71cm	81cm	94cm	105cm
HIP	25 1/4"	28 1/4"	30"	31 1/4"	33"	31 1/2"	36"	42"	46"	50"
	65cm	72cm	76cm	80cm	84cm	88cm	97cm	107cm	117cm	127cm
Body Measurements-Boys						Body Measurements-Men				
SIZES	6	8	10	12	14	SM	MD	LG	XL	XXL
CHEST	25"	27 1/4"	29"	30 3/4"	32"	36"	40"	44"	48"	52"
	63cm	69cm	73cm	76cm	80cm	92cm	102cm	112cm	122cm	132cm
WAIST	22 1/4"	24"	25"	26"	27"	30"	34"	39"	44"	49"
	56cm	60cm	63cm	65cm	68cm	76.2cm	86.4cm	99.1cm	111.8cm	125cm
HIP	25 1/4"	27 1/4"	29"	30 3/4"	32"	37"	41"	45"	49"	53"
	64cm	69cm	73cm	76cm	80cm	94cm	104cm	114cm	125cm	135cm



# MILLINERY PATTERNS

(More Hat Patterns are available and are shown in other pattern lines)

D.L. Designs

## HATS, HATS AND MORE HATS!

- for a costume piece from the past, a unique bridal headpiece, or a contemporary fashion accent. Patterns include full size patterns, step-by-step instructions, a glossary of stitches and millinery techniques, and lists of supplies and notions needed.

All sizes are included in each pattern. The sizes are as follows.

Women 21" - 22" - 23"

Men 22" - 23" - 24"

Unless otherwise noted trimmings are not included with the patterns.

PRICE - ALL PATTERNS ARE \$14.95 EACH + SHIPPING



STYLE #132

From Medieval times, the "Hennin" was an extravagant trend that swept across Europe. Chosen by queens and commoners both it captured the imaginations of the time. Covered in the richest brocades, velvets and satins they are breathtaking and unusual, the final touch for Medieval dressing.



STYLE #131



STYLE #121

The poke bonnet trimmed in lace and silks was the height of fashion in the 1830's. Finished in cottons and simple trims, this shape becomes the practical bonnet worn by America's frontierswomen.

### MESH HAT FRAME TO COVER

Stiff white mesh bonnet, similar to above, readymade, fits all sizes.

To line, cover and trim. (This is not a D.L. Design) \$12.50 + shpg.



STYLE #123

The pillbox--a true classic in hat shapes. What else can we say?



STYLE #125

This large brimmed, feminine style has been popular throughout fashion history. Its timeless shape has been seen at the turn of this century as well as in Gainsborough's time; it also complements today's fashions.



STYLE #117

The sophisticated look of the 1940's in a hat whose open crown bold dramatic shape is reminiscent of Russian styling.

Amazon Drygoods  
1 (800) 798-7979  
411 Brady Street  
Davenport, IA 52801-1518



STYLE # 124

View A

View B

Inspired by the diadems of Greek and Roman times, these shapes evoke a simple elegance, which makes it a lovely choice for a bridal headpiece. VIEW A has a round silhouette and includes directions for a softly pleated covering. VIEW B comes to a soft peak at center front. This view is easily adapted for a 1920's or Eastern European look.



STYLE # 119

This shape brings you the chic and dash of the 1940's "saucer" hat. You can trim it in soft veiling and flowers for bridal, or make it dramatic with your own exotic feathers and accents.



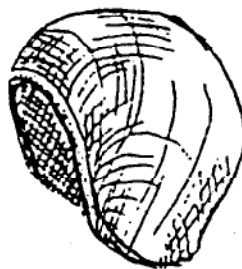
STYLE #130

45

Distinctive styling gives this modern "Beret" a sophisticated forties attitude.



STYLE # 118



CLOCHE or HELMET HAT FRAME  
Stiff white buckram, readymade, fits all sizes. To line, cover and trim. Wired edge. (This is not a D. L. Design) \$6.00+ shipping

We have taken the "skimmer" of the 1890's and added a modern flair. Equally at home in today's wardrobe as it is on the stage.



STYLE # 129

The basic beret with smart new detail and shaping, designed to be worn at a rakish tilt. Both Berets may be made in your choice of fashion fabric or felt.



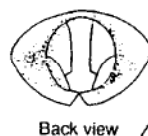
STYLE # 127

View A

View C

View B

Numerous requests have prompted the addition of the "cloche" to our pattern line. Small and feminine is the look of the cloche hat. In woolsens for Winter and linens, cottons and sheers for Summer. An all year favorite. Adding flower or a pin and the three brim styles give this hat many beautiful options.



Back view

\$14.95 EACH  
+ SHIPPING



STYLE # 128

Decorative pin not included.

View A

View B

View C

A variation of the cloche, the skillful detailing of the crown gives a subtle '30's feeling to this soft hat. Three brim options show an Art Deco flair that make a versatile and graceful array of hats for one and all.

Amazon Drygoods  
1 (800) 798-7979  
411 Brady Street  
Davenport, IA 52801-1518

STYLE # 120



A 1930's style "garden party" hat, its sheer fabric brim and softly pleated crown make it perfect for an outdoor wedding or afternoon tea.

STYLE # 126



A lovely "crownless" brim drawn from the styles of the 1920's and 1930's. In laces and sheers, its simplicity makes it ideal for the bridal party.

STYLE #134



This sleeker version is the "Spanish Toque", said to have been worn originally by the Spanish in Renaissance Europe. Trim and splendid in velvets and satins, an exquisite example of 16th Century mens and womens fashion.

**\$14.95 EACH**  
+ SHIPPING



STYLE #136

The Renaissance Beret or "Flat Cap" was a standard for men and occasionally for women in 16th Century Europe. Use velvets, silks or satins and decorate with plumes and jewels to make this hat the perfect compliment to Renaissance costume.



STYLE #138

From the early 19th Century these elegant "Top Hats" were worn by men and women alike. Women adapted these styles for their riding habits by adding feathers and soft veiling. They translate wonderfully into modern fashion with velvets, satins, moires and failles.



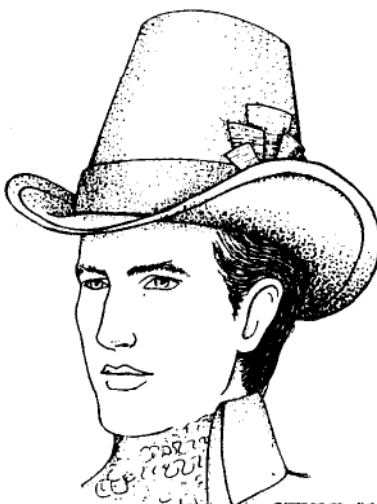
STYLE #137

A common style for folk in Medieval Europe. The hood and liripipe can be made with two different color fabrics for a more festive "parti-colored" version.



STYLE #135

The height of fashion from Renaissance Europe, the soft pleated crown and padded roll brim are rich details that make this "toque" rich with authenticity. Trimmed lavishly or simply to perfection in velvets brocades and satins.



STYLE #139



STYLE #133

Originally from the late 1880's, this cloth sportscap has become a classic in menswear.

Amazon Drygoods  
1 (800) 798-7979  
411 Brady Street  
Davenport, IA 52801-1518



GRA-1

**Hemstitched Christening Gown**

Circa 1865. Simple, elegant, with shoulder puffs and rows of hemstitching at yoke and hem. Slip included. 3 mo. and 6 mo. sizes.



GRA-2

**Tiny Tucks Gown**

Circa 1890's. Shoulder puffs frame a yoke of tucks and lace inserts. Tucks are repeated above the flounce at hem. 12 mo. and 18 mo. sizes.



GRA-3

**Victorian Handkerchief Dress**

A pure silk cutwork hanky trims the yoke and sleeves of the original gown. Ribbon rows circle the skirt. Use an heirloom or shop boutiques for the hanky. 12 mo. and 18 mo. sizes.



GRA-4

**Shirred Yoke Christening Gown**

Circa middle 1800's. Very dainty, of sheerest fabric. Requires less handwork. Slip included. 3 mo. and 6 mo. sizes.



GRA-5

**"Sweet Baby" Gown**

Late 1800's. Shirred yoke, flowery embroidery, and hemstitching. Tucks and flounce. A delightful dress. 12 mo. and 18 mo. sizes.



GRA-6

**Embroidered Handkerchief Gowns**

A composite of 1890's gowns. Two lovely ways to use embroidered hankies. Tucks and tiny bows accent the wrists. 12 mo. and 18 mo. sizes.

**Lace Yoke Gown GRA-7**

Circa 1890. A potpourri of laces creates a yoke without seams that flows softly over baby's shoulders. 12 mo. and 18 mo. sizes.

**Nineteenth Century Collection  
Designs for Baby****About the Patterns**

**Authenticity.** Every pattern is a replica of an original 19th century garment from our collection. We have made a few changes in construction - for example, we moved sleeve seams from the front to the underarm. We also added sleeve plackets to some of the gowns to make it easier to dress baby. Although the dresses can be shortened, we recommend making them in their original length. It makes fashion sense to hide bulky diapers and socks that tend to sag.

**Victorian Jacket and Bonnet**

Use your machine to duplicate the hand embroidery. A charming and useable set. 12 mo. and 18 mo. sizes.

GRA-8

1(800) 798-7979

Amazon Drygoods  
1 (800) 798-7979  
411 Brady Street  
Davenport, IA 52801-1518

Multi-sized, all sizes in one.  
Each pattern \$10.00 + shipping.

We suggest our "Nainsook" cotton fabric from the General Catalog.

**Suitable Materials.** A ladies magazine advised mothers in 1897, "if one's circumstances warrant it, choose the finest material for baby's outfit and have every stitch put in by hand. Let the trimming consist of hemstitching, with narrow fine lace for neck, sleeves, and trimming of the yoke". We recommend finest washable batistes, linen types, or silks for gowns, and superfine wools, softest corduroy, or suede cloth for the jacket set. The custom in the last century was for most baby clothes to be white or shades of cream. We recommend the latter as they compliment baby's coloring and also enhance the feeling of antiquity of the gowns. In selecting trimmings, choose only delicate laces with small designs. Most gowns in the original collection used more than one lace but care was taken to see that the laces were compatible.

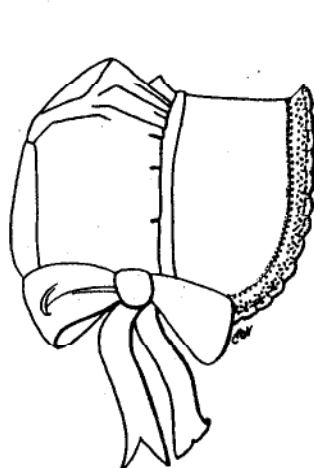
**Sewing.** Our patterns give complete, illustrated instructions. Measuring is required for skirt pieces since pulled threads and hemstitching are often part of the design. Whenever possible, the patterns allow use of the machine, even to the extent of simulating hand hemstitching. Still, the gowns cannot be made in an evening.

**Sizes.** Our pattern sizes are comparable to those in fabric store catalogs. Each pattern includes 2 sizes in one envelope: either 3 months and 6 months, or 12 months and 18 months.

**Practicality.** The gowns in this collection are clearly heirlooms and you will want to preserve them for future generations. However, we offer these patterns for their becomingness to baby and for their suitability to today's church and family celebrations.

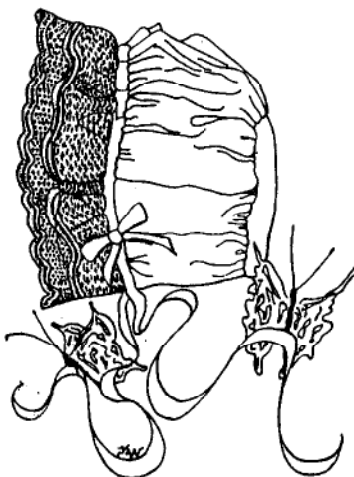
## Heirloom Baby Bonnet Patterns

Five sizes included in each pattern!



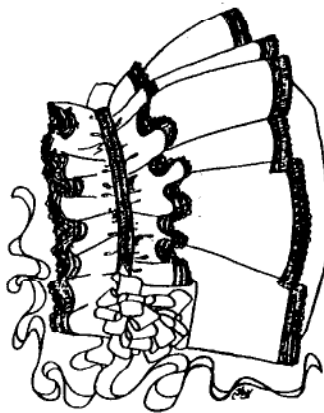
**Laura \$5.00**

Laura—Prairie Sunbonnet fondly remembered during the 1850's. Cotton calico and eyelet lace make it irresistible. Sizes: Six Months, One Year, Two Years, Three Years and Four Years.



**Amber \$5.00**

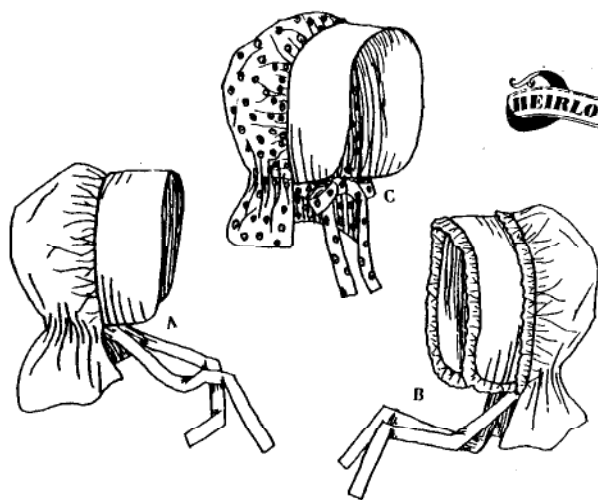
Amber—Victorian bonnet, popular at the turn of the century. Lots of frills and so feminine! Sizes: Premie, Newborn, Six Months, One Year and 18 mos.—2 yrs.



**Erin \$5.00**

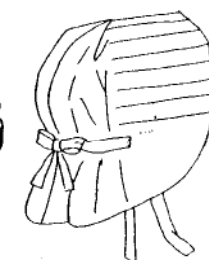
Erin—Sweet ruffled bonnet, reminiscent of the late 1920's. Ribbon rosette at each cheek. Sizes: Premie, Newborn, Six Months, One Year and 18 mos.—2 yrs.

**All Patterns are full-size. Each one has detailed instructions, including illustrations.**



**#101 SIMPLE SUNBONNET . . . \$8.95**

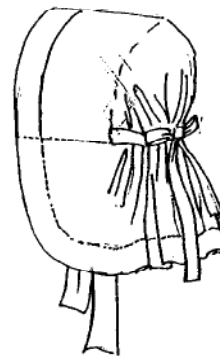
Three variations on the classic sunbonnet worn from the frontier days up to the Second World War. Sunbonnets (as well as work aprons) did not match the dress as they were generally made from the least worn parts of an old dress. The sunbonnet is probably the only distinctive American fashion. Sized for baby, girl and lady.



**#102 SLAT BONNET**

**#102 SLAT BONNET . . . \$8.95**

The classic practical sunbonnet with cardboard stiffening the brim, removable for washing and ironing. Worn universally and made from a variety of fabrics.



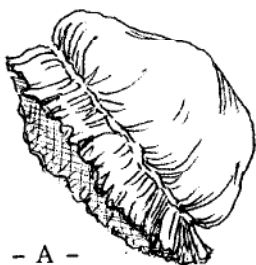
**#103 AMANA BONNET**

**#103 AMANA BONNET . . . \$8.95**

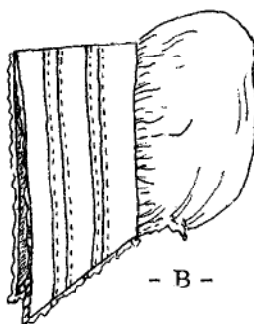
The Amana Colonies (Iowa) version used one large cardboard, worn in Amana Indigo Blue calico by women and children. The men wore this version in Black for farm work.

**NEW! Real Indigo Print Fabric, Dark Blue 35" @ \$15.95 #103 takes 2 yards of 35". Imported, erratic supply, please inquire.**

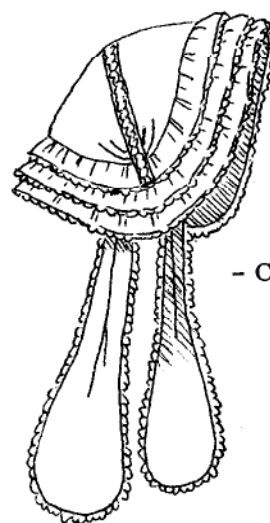
Amazon Drygoods  
1 (800) 798-7979  
411 Brady Street  
Davenport, IA 52801-1518



- A -



- B -



- C -

- A - 1700's Mob Cap - No pattern is needed or offered. A Mob Cap is a circle of fabric gathered in by means of a casing. Try a 22" or 24" circle. Patterns for other 1700's Day Caps are elsewhere in this catalog.
- B - 1830's, 40's Day Cap Pattern, one size . . . . . \$6.75  
This Day Cap was worn indoors, and left on under a sunbonnet or dressy bonnet worn outdoors. Instructions for other styles and matching "Pelerines" (shoulder capes) are included.
- C - 1850's, 60's Morning Cap Pattern, one size. . . . . \$6.75  
This fancy cap with lappets was worn indoors as a decorative fashion accessory by married women and older ladies.

### LADIES DAY CAPS

Historical notes included.

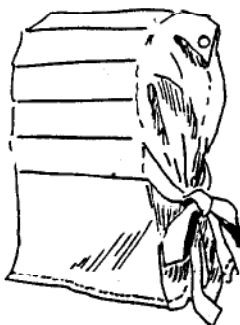
Shipping additional.



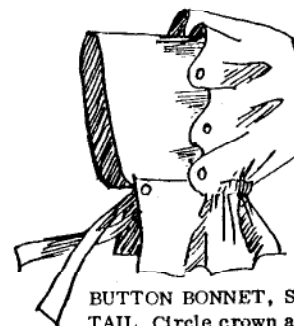
**LIVVY'S SLAT BONNET**  
available child size as a separate pattern.  
\$6.00

**LIVVY'S SLAT BONNET**  
One piece bonnet buttons together and has removable slats. The ruffle can be made 3" as shown or as long as 8".

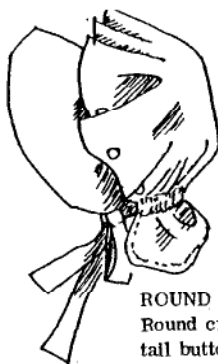
(Adult size not available)



**1890/1929 SLAT BONNET**  
The 1929 original had a cornflake box cut up for slats. One piece bonnet sits well on the head, ties are optional. Style dates from 1890.



**BUTTON BONNET, SQUARE TAIL** Circle crown and attached square tail. Two pieces.



**ROUND BUTTON CROWN**  
Round crown with attached tail buttons on to crescent brim, two pieces.



## Sunbonnet Treasures

EACH  
PATTERN  
(Adult sizes)  
\$8.95



**OCTAGON BUTTON BONNET**  
An octagon makes the crown and two crescents form brim and tail, unbuttons to 3 flat separate pieces.

All of these unique bonnets are copied from originals of long ago. Each one is constructed to be ironed flat! They either unbutton and/or have removable slats. One size (adult).

Amazon Drygoods  
1 (800) 798-7979  
411 Brady Street  
Davenport, IA 52801-1518