

1878-GENTLEMANS SACKSUIT,

A (38-40-42) OR

B (44-46-48) CHEST SIZE \$23.95



The gentleman's three-piece sack suit was drafted by Linda Morton, using an 1876 pattern system published by Powell and Kohler. It is of a style suitable for the entire 1870's, and basically not too different from the cut of the 1860's. The sack suit, introduced in the 1840's, was an alternative to the more dressy black suits of the nineteenth century. It was so commonly worn and so popular that it formed the basis for today's business suit. The cut of the suit varied throughout the nineteenth century; PERIOD NOTES in the pattern envelope will assist in adapting the pattern to earlier or later dates if desired.

PATTERNS OF HISTORY 1835-1896

1870's BUSTLE PATTERN

Separate pattern to wear under bustle dresses. Use our Hoop Wire and U-tips to make. One size. \$9.50



1873



1888

1888 BUSTLE DRESS

Afternoon or walking dress with one piece bodice made to look like blouse, vest and jacket. In two size ranges, 3 sizes each. A(8-10-12) or B(14-16-18) each \$19.95

NEW



1899 WEDDING GOWN

The Gibson Girl bride who wore this two-piece wedding gown in June 1899 incorporated several fashionable elements into its design, such as the "mousquetaire" sleeves which were gathered along the seam line, sleeve caps that helped create a stylish broad-shouldered effect, a pouched front bodice, a high collar, a v-shaped waist, and a gored skirt *en traine*. The original was made of medium-weight silk satin and decorated with chiffon, beads, and lilies-of-the-valley. Our pattern can be made with the original pouched bodice or modified to a more fitted look by following the "modern" instructions.



SIZES A (8, 10, 12) OR B (14, 16, 18) \$23.95

1893 BASIC DRESS (Shown below)

A fashion popular throughout most of the 1890's, this is the basic cut for everything from a house-dress to an elegant gown, depending on fabric and trim used. Only a stiffened petticoat made from the skirt pattern is required for shape. Original dress is of shadow-printed cream color wool grenadine with purple silk trim. Choose from individual sizes 10, 12 or 14, at \$16.95 each.



1893



1881

1881 "ARTISTIC" GOWN

(Shown above) Definitely not in keeping with the mainstream of fashion for its day. During the 1880's Paris decreed a tight corset, full bustle and elaborate trims. A great many women chose this artistic style to wear as an expression of their taste, wearing it for some of their social engagements. The style was considered romantic and picturesque. The original is of muted blue-green wool with front panel of matching moiré' smocked at waist and throat. Individual size 10 only.

\$16.95

Amazon Drygoods
1 (800) 798-7979
411 Brady Street
Davenport, IA 52801-1518

PATTERNS OF HISTORY

1835-1896

These patterns have been drafted from originals. Fashion information is included with hair, hat and wrap styles shown. In the 19th Century tradition these patterns provide the basic cut. Variation of fabric and trim will create anything from a simple day dress to a wedding gown.

The year is the pattern number.
Order by year and size.
Individual Sizes

	Bust	Waist
Size 10 - 32 1/2"		25"
Size 12 - 34"		26 1/2"
Size 14 - 36"		28"
Multi-size A & B		
8	33"	24"
10	(A) 34"	25"
12	35"	26"
14	(B) 37"	28"
16	38"	29"
18	40"	31"

Amazon Drygoods
1 (800) 798-7979
411 Brady Street
Davenport, IA 52801-1518



1835

1835 AFTERNOON DRESS

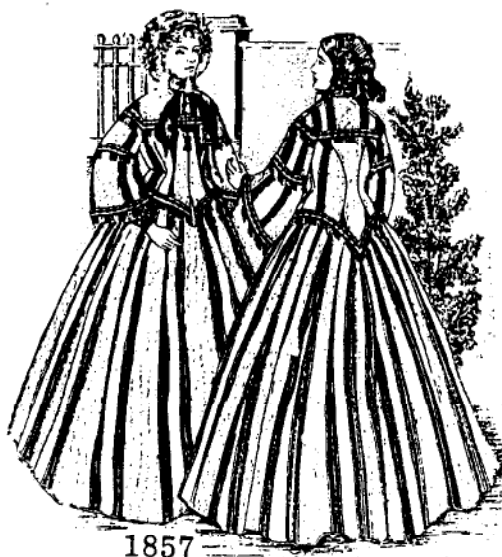
In the large sleeved style popular from 1832 through 1836, sleeves called "gigot," or leg-o-mutton. The full skirt is pleated into the raised waist of the attached bodice. A removable double pelerine is worn optionally over the shoulders. The original is brown moire' worn over full petticoats. Choose individual size 10, 12 or 14, at \$16.95.

1840 SIMPLE DAY DRESS

with narrow sleeves and "Marie Stuart" bodice of 1837 through 1840. Cotton or silk with no elaborate trimmings with the full cartridge pleat skirt worn over several petticoats. The original is a small checked cotton of green and brown on cream. Size 10, 12, or 14 at \$16.95.

1857 AFTERNOON COSTUME

to be worn over a full round hoop skirt and white undersleeves. The original of green moire' with silk fringe, was worn on March 4, 1857 to the inauguration of James Buchanan. Sizes are multi in two ranges, A (8-10-12) or B (14-16-18) at \$23.95 each. State size



1857



1840

1865 DRESS & PALETOT JACKET

to be worn over a full oval hoop. The original is a cream-white silk and wool blend trimmed with black lace and black velvet ribbon, worn as a wedding dress. Individual sizes 10, 12 or 14 at \$16.95.

1874 BUSTLE WALKING DRESS

The pattern has many of the typical features of an early 1870's dress including a tight-fitting, short-waisted bodice with peplum and coat sleeves, a bustled apron-style overskirt, and a skirt with straight front and full back. Sizes are: A(8-10-12) or B(14-16-18) at \$23.95 each. State size.

1894 WALKING DRESS

for the active 1890's woman has the enormous "leg-o-mutton" sleeves of 1893 to 1896. The blouse effect is a false front, part of the jacket, made in a contrast fabric. The original is navy blue wool broadcloth.

Individual size 12 or B (14-16-18) or "NEW" - C (20-22-24) at \$23.95 each. State size



1874



1865



1894

Scarlett, #4: "Barbecue Dress"—Version #1. Skirt: Off-white muslin, fine grade, with moss green floral pattern. Waist: Moss green velvet bands the waist but comes to a point at the center at the top of the velvet band, which ties in back in a long, flowing bow. Bodice: Off-white, fine grade muslin with moss green floral pattern. Neck: Off-white muslin with moss green floral pattern ruffle adorns the low-scooped neckline. Moss green velvet ribbon is drawn through the bottom of the ruffle, and another band of ribbon edges the top of the ruffle and goes around the entire neckline. Velvet, in moss green bows, crowns the top of each shoulder and at mid-bosom. Also, bows can be found at each shoulder under one of the ruffle's many layers. Hair: Parted in the center and gathered at the top of the head at the sides with two moss green velvet ribbons. See Scarlett, #2, as well. Accessories: Shawl—White floral patterned lace. Umbrella—Covered with black lace; brown, wood handle—"t" at the top and bottom. It should be noted that the handle is fashioned of rosewood. Earrings—See Scarlett, #2. Gloves—Fine cotton cloth. Wrist-length. Each glove buttons at the palm side at the wrist. Buttons are of white mother-of-pearl. Necklace—Pink-orange coral stones cut in half-globes and arranged in the shape of flowers—four settings are smaller in size, while the center one is slightly larger with a teardrop of coral hanging below it. Gold chain connects one setting to another. Three rows of chain radiate from either side of the large setting, but only two rows connect the other settings from one to another. Hat—Large yellow straw Leghorn hat that goes to the shoulders in back and has a sloping crown. Large moss green velvet streamers tie under the chin. Scenes: Lacing Scene, Arrival at the Barbecue, Greeting Ashley and Melanie, Greeting and Flirting with Beaux, Talk with Cathleen Calvert, Sighting Rhett Butler, Eating Barbecue. The hat has long since disappeared, but the barbecue creation was remade for the fortieth anniversary of *Gone with the Wind* by Walter Plunkett from a spare bolt of original cloth and displayed—property of the Los Angeles County Museum of Art.

The Burgundy Dress

Multi-sized adult pattern includes 10 - 20 (Bust 33 1/2" - 42) \$35.00 + shpg.

Amazon Drygoods
1 (800) 798-7979
411 Brady Street
Davenport, IA 52801-1518

Scarlett, #51: "Burgundy Party Gown." Gown: Gown of burgundy velvet, fitted and gathered in back. Low-cut, scooped neckline. Trimmed with round garnet stones. The stones are mounted on gold discs. These stones outline the bosom—some on the lower bosom edge and down the front happen to be teardrop, garnet jewels on gold mounts. Round garnet stones on gold settings are scattered over the entire gown. Burgundy ostrich plumes cascade across the bustle and at the sides of the rear gather. Plumes also adorn each shoulder and go over them, acting as shoulder straps. Hair: Curled on top. Large curls pinned at the back. Accessories: Gloves—Mid-arm burgundy linen gloves. Bracelet—Filigree discs with half-moon garnets in the center of each disc, which is made of gold. Earrings—Gold leaf-shaped earrings with gold disc setting at the top of each leaf. Each disc has a large garnet half-moon. Stole—Burgundy tulle. Floor-length. Scenes: Ashley's Birthday Party.

The Barbecue Party Dress

Multi-sized adult pattern includes 10 - 20
\$25.00 + shpg.

PEG 9

All Sizes Printed in Each Pattern



Inspired by

Gone with the Wind



The best modern fabric to use in reproducing the Barbecue Party Dress is "Printed Sheer" drapery fabric, available in Window Fashion stores or Drapery Departments.

Multi-sized adult pattern includes 10 - 20
\$16.95 + shpg.

PEG 10



Keep This For
The Barbecue Party Dress

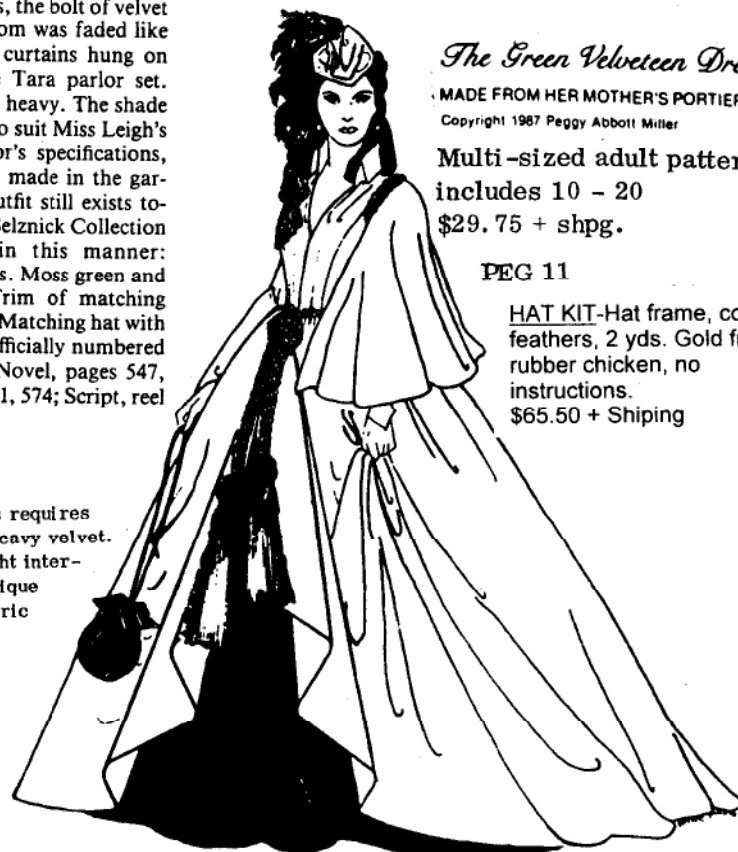
©1986 Peggy Abbott Miller

Scarlett, #31: "Drapery Dress."

Skirt: Light green velvet underskirt with moss green velvet overskirt that parts in the center front. **Waist:** Drapery cord belt—two colors twisted together (gold and dark green). Belt ties at the waist in a knot, and the ends of the cord terminate in two giant drapery tassels of the same two colors. **Bodice:** Moss green velvet with seamed center front. **Neck:** "V"-neck with stand-up moss green velvet collar. **Sleeves:** Fitted moss green velvet sleeves with the cuffs coming to a "v" on top of the hand with semi-cape over the left shoulder—the latter is made of the same velvet. Gold and dark green drapery cord goes around the left armhole seam. **Hair:** Long, hanging curls. Twisted curls at the sides. **Accessories:** Bonnet—Light green velvet peaked bonnet with light green velvet strap that goes under the chin. Two gold-painted chicken feet—one perched on the right side of the head and one at the back. A cascade of black rooster feathers goes from the top of the bonnet and down the right side of the head. Gold drapery lining with gold fringe edging hangs from the top of the bonnet, going just over the shoulder. **Earrings:** Dropped gold pierced earrings with hanging gold discs that have gold fringe. Diamonds are in the center of the discs. Another diamond can be seen in the gold setting next to the ear. **Reticule:** Drawstring reticule of moss green velvet. **Scenes:** Atlanta Horse Jail Scene, Walking Atlanta's Streets, Meeting with Frank Kennedy.

The dress itself was aged as if the sun did the aging—that is, the bolt of velvet it had been taken from was faded like worn curtains. The curtains hung on the windows of the Tara parlor set. They were extremely heavy. The shade of the dress needed to suit Miss Leigh's eyes and Technicolor's specifications, so adjustments were made in the garment's color. The outfit still exists today in the David O. Selznick Collection and is described in this manner: "Visiting dress. 1860's. Moss green and chartreuse velvet. Trim of matching silk cord and tassels. Matching hat with coq feathers." It is officially numbered as #16. **References:** Novel, pages 547, 549, 551, 567; 568, 571, 574; Script, reel 8, pages 11, 13, 15.

The drapery dress requires over 30 yards of heavy velvet. For a lighter weight interpretation use "Antique Satin" drapery fabric in dark green and chartreuse.

*The Green Velvet Dress*

MADE FROM HER MOTHER'S PORTIERES
Copyright 1987 Peggy Abbott Miller

Multi-sized adult pattern
includes 10 - 20

\$29.75 + shpg.

PEG 11

HAT KIT: Hat frame, cog feathers, 2 yds. Gold fringe, rubber chicken, no instructions.
\$65.50 + Shipping

The edited clothing descriptions used on these pages are from "GONE WITH THE WIND ON FILM, A Complete Reference," by Cynthia Marylee Molt. This 544 page book, 8 years in the writing, is a monumental work. Detailed coverage is given to the characters, the cast, crew and contenders with complete histories, costumes, sets, filming and music. The book contains a complete description of every garment worn in the film, clothing made for the film and not worn, clothing worn only for publicity stills and what was worn to the Academy Awards presentation. The ten sections of the book include the filming schedule, bibliographies, discographies, filmographies of the cast and information on still photographs and collectibles.

This incredible and fascinating book is available from Amazon Drygoods at \$49.95 + shipping. (Hardbound)

*Bonnie's Blue Riding Habit*

Copyright 1988 Peggy Abbott Miller

Multi-sized child's pattern

includes 6 - 12

\$18.50 + shpg.

PEG 12

Amazon Drygoods
1 (800) 798-7979
411 Brady Street
Davenport, IA 52801-1518

Bonnie, #8: "Riding Habit" or

"Final Ride." **Skirt:** Dark royal blue velvet. Floor-length. **Waist:** Pointed "v" waistline. Ruffle at rear, which creates a bustle effect. Made of the dark royal blue velvet. **Bodice:** Dark royal blue velvet with self-fabric buttons down center front. **Neck:** Large white cotton scalloped lace collar with rounded ends. Goes over tops of shoulders to seams of the armholes. Curves across the back. Neck itself is rounded. At throat at center front, there is a dark blue satin ribbon bow with diagonally cut ends. **Sleeves:** Dark royal blue velvet. Fitted to wrist with turn back cuffs with large self-fabric button at each. **Hair:** Same as Bonnie, #5. **Shoes:** Boots. Black patent leather. Small heels with buttons at side made of the leather. **Accessories:** Hat—Small top hat crown and oval-shaped. Dark royal blue velvet. Curled brim at sides. Dark bright pink ostrich plume flows front to back. **Stockings:** Same as Bonnie, #4. **Riding crop:** Walnut with wide forked end; opposite end has dark brown leather loop, acting as a holding strap. Knob of the walnut and two strips of the leather create the forked look. **Gloves:** Dark bright pink velvet. Ribbing between fingers. Self-fabric button at wrist. Circular opening above button. **Petticoat:** White muslin. **Scenes:** Bonnie's Last Ride. **Facts:** Costume test slate has #5.

PLEASE PLACE YOUR ORDERS
WITH YOUR AUTHORIZED DEALER
AMAZON DRYGOODS
411 BRADY STREET
DAVENPORT, IA 52801-1518
1 (800) 798-7979

Heidi's
Paper and Petticoats
Presents



© by Heidi Marsh, 1983

Except as noted otherwise, all patterns are of average difficulty to those with basic sewing skills.

to those with basic sewing skills.														
LADIES' SIZE CHART														
MEASUREMENTS	31	32½	34	36	38	40	42	44	46	48	50	52	52	54
Bust	23	24	25½	27	29	31	33	36	38	40½	43	46	49	52
Waist	33	34½	36	38	40	42	44	46	48	50	52	55	58	61
Hips	15	16	16½	16½	16½	17	17½	17½	17½	17	Majestic		Queen	
Back-neck to waist	Small		Medium		Large		X-Large		Queen					
SIZES	8	10	12	14	16	18	20	22	42	44	46	48	50	52

Please do not be upset by my pattern sizing. The chart above is the size chart upon which my Ladies' patterns are based. This is one of the older size charts so it varies a little from our present-day sizes.

I am making my patterns in 3 major size ranges: sizes 8-10, sizes 12-14, and sizes 16-18. Both sizes are given on each pattern. Many patterns are also available in the size ranges 20-22 and 42-44. Below each pattern, I have indicated the range of sizes in which each pattern is immediately available, i.e. 8-22 means that pattern is available in sizes 8-10, 12-14, 16-18, 20-22.

My patterns are made to fit snugly, so you may find them a little small even though the size is larger than you wear in other brands of patterns. Choose the size range which you feel WILL FIT YOU BEST, using your BUST measurement as the guide.

When I receive an order, I try to choose the size which is closest to your bust measurement as it is easier to alter the waist than the bust. I have tried to make notes on my patterns as to where it is best to adjust the fit.

Since I am endeavoring to make a large variety of Civil War Era style patterns available to a large variety of people at a reasonable price, I am not trying to make custom-fit patterns. Please EXPECT to do some ADJUSTING of my patterns.

THE MOST IMPORTANT THING TO REMEMBER IS: TRY OUT THESE PATTERNS IN SCRAP CLOTH, FIRST, ESPECIALLY THE BODICE PARTS.

Oh yes, you will notice some changed lines on my patterns. I hope you will excuse these errors. All my masters are drafted by hand, and a line occasionally gets where it doesn't belong! YARDAGES GIVEN ARE MAXIMUM NEEDED. CHECK PATTERN BEFORE FINAL PURCHASE.

PLEASE INCLUDE YOUR BUST AND WAIST MEASUREMENTS ON YOUR ORDER BLANK TO HELP INSURE THAT I SEND THE CORRECT SIZE PATTERN

Please note that at times some of these patterns may take 4 weeks time for delivery so please plan ahead. No returns or exchanges on patterns.

Amazon Drygoods
1 (800) 798-7979
411 Brady Street
Davenport, IA 52801-1518

STATE SIZE
See Size chart

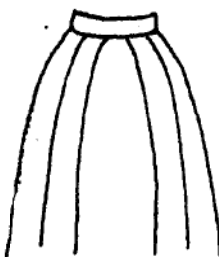
p. 54



LD-1-WD--\$15.00

LADIES' WORKING DRESS
The perfect dress for both household chores and outdoor duties. 1859

8--22 8 yds.

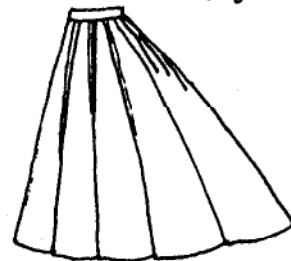


LD-3-BPS--\$10.50

BASIC PLEATED SKIRT
A SIMPLE, basic pattern that is easy to fit and can be trimmed as elaborately as desired.

S-M-L-XL 3 yds.

LS-1-PGS-1--\$11.75
PLEATED, GATHERED SKIRT
"Cluster" pleats help move weight to back, 1862
S-M-L-XL 4 yds.



SP-1-BD--\$17.00
BLOOMER DRESS
Comfortable sports outfit, based on Amelia Bloomer, 1851
12--22



LD-10-HDF-1--\$21.75
HOUSE DRESS WITH FRINGE
Makes up into a very pretty dress. Requires some adjustment of over-skirt and fringe, 1864

8--44
9 yds.



LD-6-TDL-2--\$15.00
TRAVELING DRESS WITH LAPELS

Quite simple, makes up into a very nice dress. 1861

8--44 7 yds.



LD-12-MW-3--\$21.75
MADELINE WRAPPER (Robe)
A SIMPLE, easy-to-fit dress that may be as elaborate as desired. 1862 "multi" Size
S-M-L-XL 7 yds.



LD-9-MD-1- \$21.75
MORNING DRESS
A wrapper-style dress, with weight toward the back in the style of the mid 60s. 1865

8--22
8 yards.

LD-11-MDC-2--\$21.75
MORNING DRESS (Robe)
The gored skirt and bodice pieces are cut in one length. May be made up as elaborately as desired. 1857
8--22 8 yds.

LD-2-EWD--\$14.00
THE EMILY WYANT
Based on an orig. photo, a good all-around dress, features sleeve jockeys.

8--44
4½ - 7 yds.



BE SURE TO STATE SIZE
See size chart
on page 54

Amazon Drygoods
1 (800) 798-7979
411 Brady Street
Davenport, IA 52801-1518

"Wrapper" or "Morning Dress" above, means robe or negligee.

LD-4-PDD-1-- \$21.75
 POLONAISE DINNER DRESS →
 Make as a basic gored dress
 or with bows and inserts.
 Skirt and bodice are in one
 piece. 1861 8--44
 8 yds.



STATE SIZE

See chart

p. 54



← LD-5-PTD-1-- \$21.75
 POLONAISE TRAVELING DRESS
 A basic dress. Gored
 skirt and bodice are cut
 in one length. 1861
 8--44 8 yds.



LD-8-DWP-- \$21.75
 DRESS FOR A WATERING PLACE
 A fairly simple skirt and jacket
 outfit. Braid design not included.
 1863 8--44 7½ yds.



LD-13-LW-- \$23.25
 THE LILLIAN WRAPPER
 Versatile, comfortable.
 Can be used as a MA-
 TERNITY dress, has a
 built-in corset.
 Sizes 12/14 &
 16/18 only. No
 other sizes.
 7-9 yds.



LD-7-DDL-2-- \$15.75
 DINNER DRESS WITH LAPELS
 A fancy-style dress with
 a double skirt. 1860
 8--22Max. 19 yds.



LB-1-BGT-- \$8.75
 BASIC BALLGOWN TOP
 A basic bodice; add
 a gathered skirt for a
 simple ballgown.
 8--44 1½ yds.

LB-6-RPG-- \$21.95
 ROSE PETAL
 BALLGOWN
 Stunning, elegant, but quite easy
 to make. 1862 8--48 21 yds.



LB-5-ED-- \$15.00
 EVENING DRESS
 A simple but elegant gown.
 Has a front seam bodice.
 1859 8--44 8 yds.



LB-3-FBG-- \$21.75
 FLOUNCED BALLGOWN
 Called the Almeda in
 1859. A fairly simple,
 yet elegant gown.
 8--48 15 yds.

LB-2-PBG-- \$26.25
 PUFFED BALLGOWN
 The gown on the right and
 the pattern were made from
 the 1861 picture. An ele-
 gant gown, but ADVANCED.
 8--44 16-18 yds.



BE SURE TO STATE SIZE

See chart
 on page 54

Amazon Drygoods
 1 (800) 798-7979
 411 Brady Street
 Davenport, IA 52801-1518

INCLUDE POSTAGE

CHOOSE SIZE
See chart
p. 54

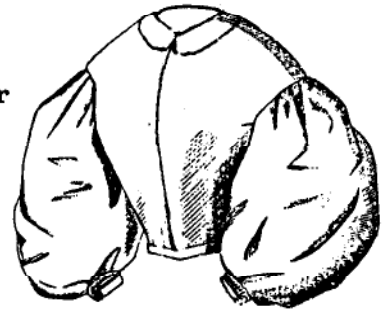


YLD-1-ED-- \$15.75

YOUNG LADY'S EVENING DRESS
Specified as a young lady's
gown but suitable for any age.
Trim can be simple to elegant.
1864 8-22 7-12 yds.



LB-4-SBG-- \$21.95
SQUARE NECK BALLGOWN
May be made as an over
dress or as a gown in
itself. 1863
8-48
8-16 yards.



LT-1-BT-- \$21.75
BASIC TOPS

An excellent starter
pattern, includes fitted
top, loose-style top, sev-
eral sleeves and collars.
8--48 3½ yds.



S-M L-XL
1½ yds.

LT-8-CT-- \$6.75
CHEMISETTE

A dickie-like gar-
ment worn under jackets.



LT-9-GB-- \$10.50
GATHERED BLOUSE, 1862
Simple, but elegant
S-M L-XL Queen
3 yds. Size



LT-5-BFS-- \$16.95
BLOUSE WITH FANCY SLEEVES
This elegant blouse is really
the top of a wedding gown.
May be made with a high or
low neck. 1861

8-22
4 yards.

LG-2-ZW-- \$9.50
ZONAL WAIST, 1862
Simple and slimming
S-M-L-XL
1 yd.
"multi" Size

LT-2-LFB-- \$10.50 3 yds.
BLOUSE FROM LATE 50s
A SIMPLE, easy-to-fit
pattern that is also
very pretty. 8-22



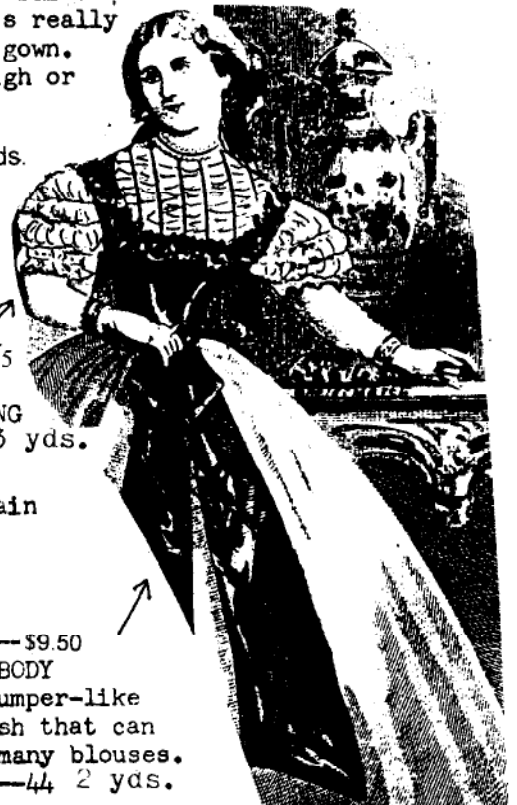
LT-4-GB-FO-- \$11.75
GATHERED BLOUSE
with FRONT OPENING
1863 8-44

LT-3-GB-BO-- \$11.75
GATHERED BLOUSE
with BACK OPENING
1860 8-18 3 yds.

Each of these blouses offers a plain
back or a gathered back. Both are
quite easy to fit.
Cuff and body are not included.

LT-7-SB-- \$9.50
SWISS BODY

A stylish jumper-like
waist with sash that can
be worn with many blouses.
1860 8-44 2 yds.



3-4½ yds. for blouse only.
See below for CUFFS and BODY.
PEASANT BODY as shown above, LG-3-PB
dress up any blouse or dress.
1863 S-M-L-XL-Q, "multi" \$9.50
VANDYKE CUFFS with collar trim
included. 1863 S-M-L-XL-Q "multi"
LSL-2-VC ½ to 1 yd. \$6.50

Amazon Drygoods
1 (800) 798-7979
411 Brady Street
Davenport, IA 52801-1518

INCLUDE POSTAGE

BE SURE TO STATE SIZE

"Multi" means all sizes are
included. Others are individual
sizes. Be sure to State Size.
See chart on page 54

See chart on page 54

CHOOSE SIZE

LT-6-TB-- \$11.75
TUCKED BLOUSE
Very stylish, and
quite simple to make.
Belt not included.
1862 8-44
3 yds.

LG-1-MG-- \$8.75
MEDICI GIRDLE WITH SASH
An ornamental belt that
will go with many outfits.
1865 S-M-L
1½ yds.
"multi" Size



LW-10-EF-1-- \$9.75
EUGENIE FICHU
Ideal for evening
wear. This will dress
up even the plainest
gown. 1864 S-M-L
1½ yds.



LW-5-M-1-- \$8.75
MANTILLA
Fluffy and
pretty, ideal for
a summer outfit.
1859 S-M-L "multi"
3 yds.



LW-6-SM-2-- \$9.75
SUMMER MANTLE
A somewhat tailored
mantle to go with your
day dresses. 1863 "multi" Size
S-M-L
4½ yds.

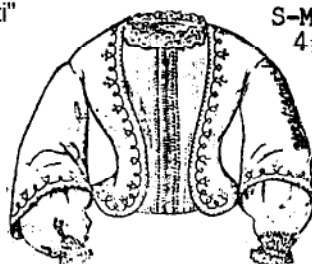
LW-9-ESM-3-- \$9.75
ELEGANT SUMMER MANTLE
For those fancy outings.
1859 S-M-L 2 yds.
"multi" Size

LW-1-FJ-2-- \$15.00

FALL JACKET
A fitted style suit-
able for traveling
outfits. 1865
8-44
5 yds.



LW-8-LJ-1-- \$13.95
LANCER JACKET
A handsome braided
jacket based on the
militaria of the day.
1862 8-44
3½ yds.



LW-4-OZJ-2-- \$8.95
OPEN ZOUAVE JACKET
A simple pattern.
Can be dressed up as
desired. Braid de-
sign included. 1862
8-44 2 yds.



LW-3-ZJ-1-- \$8.95
ZOUAVE JACKET
A basic jacket. Trim
as desired. (Trim de-
sign not included.)
1863 8-48
2 1/2 yds.



LW-2-CW-- \$21.75
with braid design- \$32.75
CORDOVAN WRAP
A basic wrap that will
go with any outfit, may
be trimmed as desired.
1863 8-22
6-8 yds.

LW-7-MB-1- \$15.00
MUSLIN BODY
May be worn as a
jacket or as a
blouse. 1857
8-44 4 yds.



BE SURE TO STATE SIZE
See chart
on page 54

Amazon Drygoods
1 (800) 798-7979
411 Brady Street
Davenport, IA 52801-1518

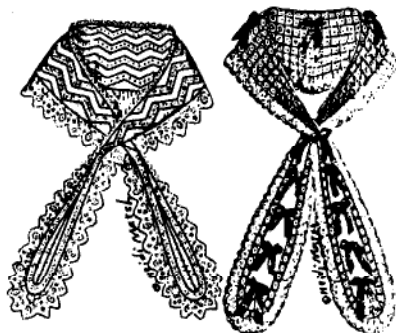
INCLUDE POSTAGE

"Multi" means all sizes are
included. Others are individual
sizes. Be sure to State Size.
See chart on page 54

See chart pg. 54
CHOOSE SIZE

2 yds.
8 yds. lac

59



LW-11-FF-2-- \$9.75

FITTED FICHU

Evening fichu in 2 styles,
fitted on shoulders, 1860
"multi" Size S-M-L-XL 1 1/2 yds.



LW-13-PS-4-- \$8.75
PELERINE WITH SLEEVES
For a bodice without
sleeves. 1865 S-M-L-XL
"multi" Size 1 1/2 yds.
lace 13 yds.



LW-12-IF-3-- \$8.75
LACY FICHU, 1859
Elegant but dainty
addition to evening
gowns. S-M-L-XL
"multi" Size



N-2-LM-- \$4.95

LACE MITTS

Quick and easy, make
to match each gown.

S-M-L
1/2 yd.



LBT-1-DB-- \$6.75

DRESSY BONNET

A basic pattern,
trim as desired.

"multi" Size S-M-L 1 1/4 yd.



LBT-2-SB-- \$6.50

SUN BONNET

1857-1859

S-M-L "multi"
1 3/4 yds



LBT-3-WB-- \$6.50

WORK BONNET

Utilitarian, wear
with work outfits.

1859 S-M-L
"multi" 1 yd.



LS-1-ES-1-- \$5.50

EMBROIDERED

SLIPPER "multi"

1858 S-M-L

1/2 yd.

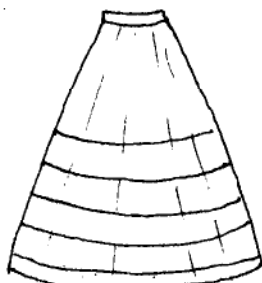


LF-1-BD -- \$5.50

FAN with

BRAID DESIGN

1857 1/4 yd.



LU-HP-1-- \$10.50

HOOP

May be made for 90,"
130," or 140" hoop.

S-M-L-XL 4 yds.



LU-PB-6-- \$8.75

BASIC PETTICOAT

Simple petticoat.

S-M-L-XL

3 1/2 yds.

"multi" Size



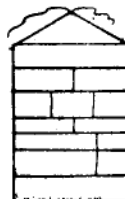
(wear over hoop)

LU-FP-3-- \$10.50

FLOUNCED PETTICOAT

A must for under light-
weight ballgowns. May
be made for 90," 130,"
or 140" hoop. S-M-L, XL

4 1/2 yds.



N-1-LTS-- \$5.50

LADY'S TOILET SACHET

Ideal for carrying
personals when
traveling. 1859

1 yd.

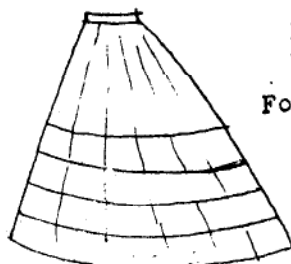


(wear over hoop)

LU-FPE-4-- \$13.95

ELLIPTICAL FLOUNCED
PETTICOAT

A must for under the
ballgowns with weight
to the back. S-M-L-XL
"multi" Size 4 1/2 yds.



LU-HPE-2-- \$11.95

ELLIPTICAL HOOP

For dresses with the
weight toward the
back. 1862-1865

S-M-L-XL

4 yds. fabric,

14 yds. hoop wire

"multi" Size



LU-PE-5-- \$11.95

ELLIPTICAL PETTICOAT

Use over elliptical

hoops. S-M-L-XL "multi" Size
5 yds.

BE SURE TO STATE SIZE

See chart
on page 54

Amazon Drygoods
1 (800) 798-7979
411 Brady Street
Davenport, IA 52801-1518

INCLUDE POSTAGE

"Multi" means all sizes are
included. Others are individual
sizes. Be sure to State Size.
See chart on page 54

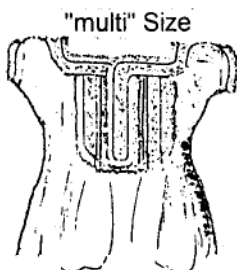
"Multi" means all sizes are included. Others are individual sizes. Be sure to State Size

STATE SIZE

See chart
p. 54



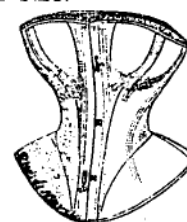
LU-OD-1--\$9.75
DRAWERS FROM AN
ORIGINAL 2 yds.
S-M-L XL-Q



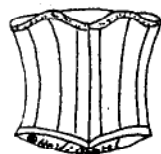
"multi" Size
LU-OC-1--\$9.75
CHEMISE FROM AN
ORIGINAL 4 1/4 yds.
S-M-L XL-Q



LU-SC-2--\$9.75
SIMPLE CHEMISE
Make with tucks or with
gatherers. S-M-L XL Q
3 yds.
"multi" Size



LU-VC-3--\$10.95
VICTORIA CORSET
Can really enhance
your figure. 1862
8--52
1-2 yds.



LU-BC-1--\$10.95
BASIC CORSET
S-M L-XL
1 yd.



LU-XLC-2--\$10.95
EXTRA LARGE
CORSET
Straps give extra
support. M, L, XL, or Q
3 yards.



LU-CC-1--\$10.95
CORSET COVER
PETTICOAT BODY
8--22
1 1/2 yds.

LSL-1-BB--\$4.95
BASIC UNDERSLEEVE
SLEEVE CRINOLINE
A must with wide
sleeves and to
support full
sleeves.
S-M-L-XL-Q
1/2 yd. "multi" Size



BOYS' SIZE CHART

MEASUREMENTS	C H I L D ' S							B O Y ' S			
Chest	21	22	23	24	25	25 1/2	26	27	28	30	32 Ins.
Waist	20	20 1/2	21	21 1/2	22	22 1/2	23	24	25	26	27 Ins.
Neck							11 1/2	12	12 1/2	13	13 1/2 Ins.
Size	2	3	4	5	6	6X	7	8	10	12	14
Child's	Small		Medium		Large		Small	Medium		Large	

I am making the Boy's patterns in the size ranges bracketed on the chart above with 2 sizes on each pattern. Patterns marked S-M-L come in 2 patterns: CHILD'S S-M-L and BOY'S S-M-L. Please indicate whether you want the CHILD'S or BOY'S pattern. Note the overlap at 6, 6X, and 7.

Remember, these are PRODUCTION patterns. EXPECT to do some ADJUSTING to fit the individual. It is always best to TRY OUT THESE PATTERNS IN SCRAP CLOTH FIRST.



BS-1-BB--\$10.50
BASIC BOY'S SHIRT
Shirt with placket
front S-M-L "multi"
2 1/2-3 yds.



BS-2-TS--\$10.50
TUCKED SHIRT
Features multiple
tucks on front 1863
"multi" S-M-L 2 1/2 yds.



BP-1-SP--\$9.75
BOY'S STRAIGHT
PANTS
Basic straight leg
pants for boys of all
ages. S-M-L "multi" Size
1 1/2 yds.

BC-1-MS--\$21.75
MILITARY STYLE
OUTFIT
Pants, vest,
jacket,
leggings.
1865



NEW! BU-2-SC BOY'S SACK COAT
Basic coat for uniform or civil-
ilian. Child's & Boy's S-M-L
1 1/2 yds. (see p 129) \$13.50

Child's (s,m,l) or Boy's (s,m,l)
Child's or Boy's "multi" Size
Multi means all sizes are
included. Others are individual
sizes. Be sure to State Size.

NEW! BOY'S SHELL JACKET
BU-1-SJ S-M-L \$13.50
See Girl's pg. 129

Child's (s,m,l) Multi or Girl's (s,m,l) Multi

"Multi" means all size are included.

Others are Individual sized.

Be sure to State Size or (Child's or Girl's).

See page 129 for more.

GIRLS' SIZE CHART

MEASUREMENTS	C H I L D ' S						G I R L ' S					
Breast	21	22	23	24	25	25½	26	27	28½	30	32	Ins.
Waist	20	20½	21	21½	22	22½	23	23½	24½	25½	26½	Ins.
Hips			24	25	26	26½	27	28	30	32	34	Ins.
Back-Neck to waist	8	8½	9	9½	10½	11	11½	12	12¾	13¼	14¼	Ins.
SIZE	2	3	4	5	6	6X	7	8	10	12	14	
	child's Small		Medium		Large			Medium		Large		
			girl's		SMALL							

I am making the Girls' patterns in the major size ranges bracketed ABOVE the line on the chart with 2 sizes on each pattern, (4 and 5 on one pattern, 8 and 10 on one pattern). Patterns such as Underclothes which are marked S-M-L come in 2 patterns: CHILD'S S-M-L and GIRLS' S-M-L. Please indicate whether you want CHILD'S or GIRLS'. Please note that GIRLS' patterns overlap the CHILD'S patterns at 6--7. Child's 6--6X are on one pattern. Girls' 6--7 are on another pattern.

Remember, these are PRODUCTION patterns. EXPECT to do some ADJUSTING to fit the individual. It is always best to TRY OUT THESE PATTERNS IN SCRAP CLOTH FIRST.



GD-1-SD-- \$15.00
GIRL'S STRIPED DRESS
Day Dress with 2
skirts and fichu, 1861
Individual sized. 4½ yds.



GD-2-WD-- \$13.95
GIRL'S WALKING DRESS
A basic walking costume, add undersleeve
to complete. 1859
Individual sized. ¾ yds.

NEW! SEE PAGE

129!



GU-3-GC-- \$8.75
GIRL'S CORSET
Yes, even children
wore them S-M-L
"multi" Size 1 yd.



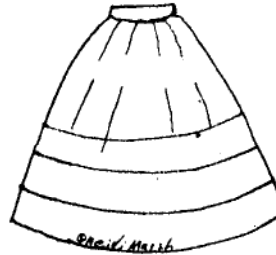
GSL-1-BS-- \$4.95
BASIC UNDERSLEEVE
AND CRINOLINE Child's (s,m,l) or Girl's (s,m,l)
Use with wide and
full sleeves S-M-L
½ yd.



GU-2-CH-- \$9.75
GIRL'S CHEMISE
A simple girl's
chemise S-M-L
"multi" Size 2¼ yds.



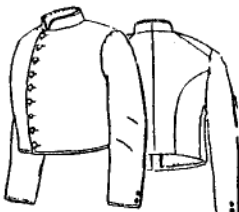
GU-4-GP-1-- \$9.75
GIRL'S PETTICOAT
Use under girl's
day dresses S-M-L
"multi" Size 3 yds.



GU-5-GHP-2-- \$9.75
GIRL'S HOOP
Features 3 or 4 hoops
Use with Day Dresses
S-M-L "multi" Size
2 yds.



GU-1-GD-- \$9.75
GIRL'S DRAWERS
Drawers with tucks
and lace S-M-L
"multi" Size 2 yds.



NEW! BU-1-SJ
Boy's Shell Jacket
S-M-L \$13.50

Amazon Drygoods
1 (800) 798-7979
411 Brady Street
Davenport, IA 52801-1518

Be sure to State Size.



NEW! BU-2-SC \$13.50
Boy's Sack Coat, Basic
coat for uniform or
civilian. Child's &
Boy's S-M-L 1½ yds.
Child's (s,m,l) or Boy's (s,m,l)

Child's (s,m,l) or Boy's (s,m,l)

I make the MEN'S patterns in the size ranges bracketed on the chart below, with 2 sizes on each pattern. Those marked S-M-L-XL are made in the ranges indicated on the chart. These are PRODUCTION patterns, so EXPECT to do some ADJUSTING to fit the individual especially in length. These patterns are based on a 6' tall man of average build so make adjustments for individual lengths of arms, legs, torso. TRY OUT IN SCRAP CLOTH.

These men's patterns are BASIC STYLES. I am offering very little instruction on specific trim such as regimental variations on the uniform coats. Such variations will be left to the individual to research and implement.

I now have a few patterns available in what I call "Majestic King." These are marked with an asterisk *. If you do not fit into my regular large sizes, send me your chest, waist, and hip measurements, and I'll try to fit you into one of these majestic king sizes. Numbers below patterns indicate sizes patterns are available.

MEASUREMENTS				MEN'S SIZE CHART							
Chest	36	38	40	42	44	46	48	50	52	54	Ins.
Waist	30	32	34	36	39	42	44	47	50	52	Ins.
Hips	37	39	41	43	45	47	49	51	53	55	Ins.
Neck	14	14½	15	15½	16	16½	17	17½	18	18½	Ins.
COAT SIZES	36	38	40	42	44	46	48	50	52	54	
PANT SIZES	30	32	34	36	39	42	44	47	50	52	
X-Small 26-28											

NEW! SHELL
JACKET
ON PAGE 129



UJ-1-PJ--\$13.95
POINTED UNIFORM
JACKET 2-2½ yds.
Basic design, much
used by Union
soldiers. 36--54



UC-3-SC--\$15.00
BASIC SACK COAT
Can be used for
military OR civilian. 36--62 2½-3½ yds.



UC-2-CEF--\$15.00
CONFEDERATE ENLISTED
FROCK COAT
Basic enlisted man's
design 36--54
3-4 yds.

3-4 yds.
UC-1-UEF--\$15.00
UNION ENLISTED
FROCK COAT
Basic enlisted
man's frock
36--62

UP-1-BUP--\$10.50
BASIC
UNIFORM PANTS
Adaptable to
Union AND Con-
federate uni-
forms
26--52
3 yds.



M-1-CWS--\$11.75
MAN'S CIVIL WAR
SHIRT
Based on pictures
of Civil War
shirts
S-M, L-XL
3 yds.



MS-2-GS--\$10.50
GATHERED SHIRT
Gathered front &
back, popular
during Civil War
S-M, L-XL
KG--XKG
3½ yds.



MC-1-FC--\$15.00
CIVILIAN FROCK
COAT
Basic frock
with lapels
36--54
3½-4½ yds.



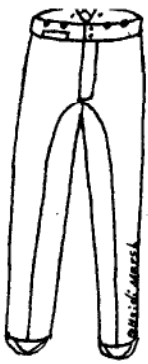
MC-2-BP--\$10.50
BASIC CIVILIAN
PANTS 3 yds.
30--54



MS-3-FS--\$11.75
FIREMAN'S SHIRT
Popular among
Union soldiers
S-M, L-XL
KG--XKG, 60--66
3½ yds.

BE SURE TO STATE SIZE INCLUDE POSTAGE

Amazon Drygoods
1 (800) 798-7979
411 Brady Street
Davenport, IA 52801-1518



UP-2-CP--\$13.95
CAVALRY PANTS
Basic Cav. style
30-54
4½ yds.

CHOOSE SIZE



MV-1-UV--\$8.75
UNIFORM VEST
Basic issued vest
36--58
1 yd.



MV-2-CV--\$9.75
CIVILIAN VEST
Features four collars
36-62 1 1/2-2 yds.



UC-4-IGC--\$17.75
UNION INFANTRY
GREAT COAT
36--54 5 yds.



UC-5-CGC--\$17.75
UNION CAVALRY
GREAT COAT
36--54 7-7½ yds.

PLEASE NOTE: when ordering the GREAT COATS, order your size according to the size chart on page 50, as these patterns have been made larger to fit over other clothing.

LADIES' RIDING HABITS

CHOOSE SIZE

See chart



LRH-3-CJ--\$10.50
CORDED JACKET
A very stylish jacket
with elegant trim. 1865
8-44 3 yds.



LRH-1-SK--\$17.50
RIDING HABIT SKIRT
Cut to drape when
seated on a horse. "multi" Size
S-M-L-XL-QU 4½ - 6 yds.



LRH-2-TR--\$9.50
RIDING HABIT TROUSERS
A necessary under-
garment for riding.
S-M-L-XL-QU
3 yds.



LRH-4-PB--\$10.50
PLAIN BASQUE
A basic jacket for
riding or any occa-
sion. 1865
8-44
3½ yds.



18 Fashion Plates
RIDING HABITS
of the
ERA OF THE HOOP

Compiled
by
Heidi Marsh
LRH-BK Book--\$13.50

Amazon Drygoods
1 (800) 798-7979
411 Brady Street
Davenport, IA 52801-1518



LD-14-CD--\$15.00
THE CONSTANCE DRESS
Plain, practical, per-
fect for everyday camp
wear. From an original.
8-44 7 yd

"Multi" means all sizes are included. Others are individual sizes. Be sure to State Size.

1860'S UNLESS OTHER-
WISE STATED.

Period Impressions

ALL DRAFTED FROM
ORIGINALS.

SIZES ARE MODERN SIZING (SEE CHARTS) BUT THIS CLOTHING IS GENERALLY MORE FITTED THAN MODERN STYLES. EACH PATTERN ENVELOPE CONTAINS 3 SIZES AND SOME IN 3 SIZE RANGES. FOR EXAMPLE, THE WOMEN'S PATTERNS COME (6 - 8 - 10), (12 - 14 - 16) AND (18 - 20 - 22). EXCEPTIONS ARE NOTED. SIZE DESIRED MUST BE STATED. SHIPPING ADDITIONAL.

WOMEN'S 1860'S PATTERNS

MISSSES

Size	6	8	10	12	14	16	18	20	22
Bust	30½	31½	32½	34	36	38	40	42	44
Waist	23	24	25	26½	28	30	32	34	37
Hip	32½	33½	34½	36	38	40	42	44	46
Back Waist Length	15½	15¾	16	16¼	16½	16¾	17	17¼	17½

GIRLS

Size	7	8	10	12	14
Breast	26	27	28½	30	32
Waist	23	23½	24½	25½	26½
Hip	27	28	30	32	34
Back Waist Length	11½	12	12¾	13½	14¼
Approx. Heights	50	52	56	58½	61

MEN

Size	34	36	38	40	42	44	46	48	50
Chest	34	36	38	40	42	44	46	48	50
Waist	20	30	32	34	36	39	42	45	48
Hip (Seat)	35	37	39	41	43	45	47	49	51
Neckband*	14	14½	15	15½	16	16½	17	17½	18
Shirt Sleeve	32	32	33	33	34	34			

BOYS

Size	7	8	10	12	14
Chest	26	27	28	30	32
Waist	23	24	25	26	27
Hip (Seat)	27	28	29½	31	32½
Neckband*	11¾	12	12½	13	13½
Height	48	50	54	58	61
Shirt Sleeve	22¾	23¼	25	26¾	29

TODDLERS

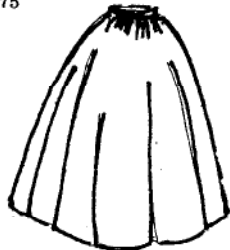
Size	1/2	1
breast	19	20
waist	19	19½

CHILDREN

4	5	6
23	24	25
21	21½	22
24	25	26
9½	10	10½

20	22	24
41	44	47

818 MARIE STUART HOOD
Make in delicate fabric for evening or wool with quilted lining for warmth. One size.
\$9.75



604 CARTRIDGE PLEAT SKIRT
Simple easy way to pleat fabric onto a waistband. Proper for work dress, day dress or ballgown.
Misses 6-8-10, 12-14-16, 18-20-22
\$11.50



406 BASIC BODICE
Use for a simple work dress or as the basis of an elaborate tea gown. Two sleeve and neckline variations.
\$12.95
Misses 6-8-10, 12-14-16, 18-20-22



403 TEA GOWN BODICE
Figure flattering bodice looks like two piece, it is one piece with dressy pleated back.
Misses 6-8-10, 12-14-16, 18-20-22
\$12.50

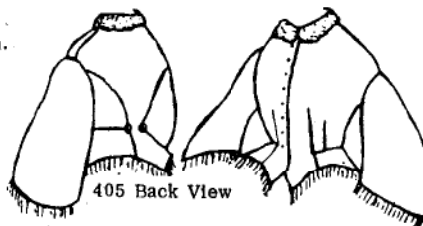


404 ZOUAVE JACKET
A very popular style. The reticule pattern is included.
Misses 6-8-10, 12-14-16, 18-20-22
\$11.50

414 GARIBALDI BLOUSE
An 1860's body to wear with the 404 Zouave Jacket. Misses 6-8-10, 12-14-16, 18-20-22
\$12.50

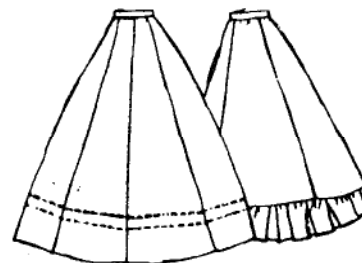


411 LUCY White body with back closure, velvet yoke and Medici girdle. Misses 6-8-10, 12-14-16, 18-20-22
\$12.50



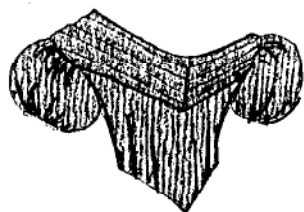
405 Back View

405 DAY BODICE
A skirted bodice shown repeatedly in Godey's, very popular during the 1860's. Can be made with a variety of trims.
Misses 6-8-10, 12-14-16, 18-20-22
\$12.50



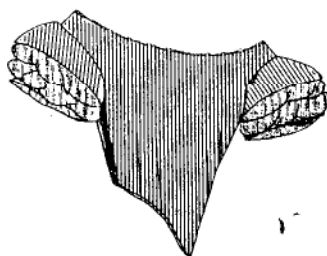
601 1860'S GORED SKIRT
A good basic over the hoop pattern, as simple or lavish as desired. From a Museum piece.
Misses 6-8-10, 12-14-16, 18-20-22
\$12.50

Amazon Drygoods
1 (800) 798-7979
411 Brady Street
Davenport, IA 52801-1518

**407 BALLGOWN BODICE**

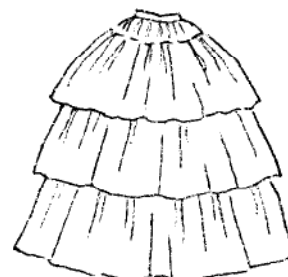
An 1860's bodice with pointed front, straight back and pleated bertha along front and back necklines.

Misses 6-8-10, 12-14-16, 18-20-22
\$11.50

**409 BALL DRESS BODICE**

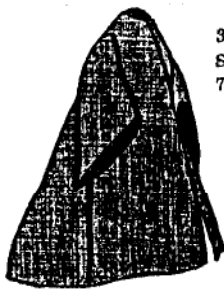
Romantic off the shoulder from an original. Pointed front and back, laced closure.

Misses 6-8-10, 12-14-16, 18-20-22
\$11.50

**602 FLOUNCED SKIRT**

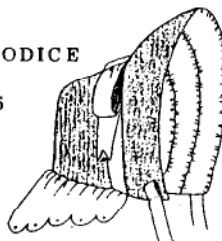
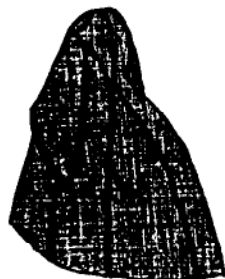
Late 1850's skirt for over the hoop can be dressed up with ruffles on the flounces for a tea gown or ball gown.

Misses 6-8-10, 12-14-16, 18-20-22
\$14.50

**308 GIRL'S BALLGOWN BODICE**

Simple version of ladies style.

7-8-10-12-14 Multi-size. \$12.75

**820 1858 CITY BONNET**

Good basic bonnet, shirred lining, easy to make. One size fits all.

\$11.50

419 PALETOTE

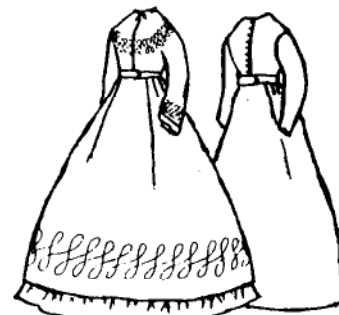
1860's overcoat with fitted back, women's sizes P-S-M-L-XL all in one pattern.

\$12.50
Girl's sizes 4-14 all in one pattern. Specify which.
\$12.00

**401 UNDERSLEEVES**

Must be worn under all pagoda sleeves. One size.

\$3.50

**450 DAY OR CAMP DRESS**

Basic dress for a work dress or day dress. Can be simple or lavishly trimmed. Misses 6-8-10, 12-14-16, 18-20-22

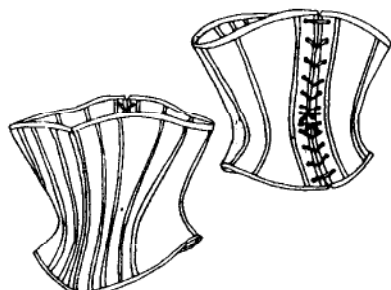
\$17.75

**603 THREE OVERSKIRTS**

Three versions, long or short to dress up a plain skirt. Match or contrast with skirt, or use lace. One size for all.

\$12.50

~~~~~ **WOMEN'S 1860's UNDERPINNINGS** ~~~~~

**503 1860'S LIGHT FRENCH CORSET**

Easy to sew, made with shaped pieces and without gussets. The most comfortable corset of the period. Misses 6-8-10, 12-14-16, 18-20-22

\$11.50

**501 CORSET COVER**

Charming off the shoulder corset cover with tucks for a smooth fit. Misses 6-8-10, 12-14-16, 18-20-22

\$11.50

**504 LADY'S CHEMISE**

Very comfortable, fullness falls from off the shoulder yoke.

Misses 6-8-10, 12-14-16, 18-20-22

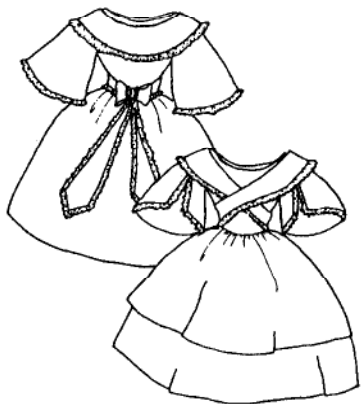
\$13.75

**505 LADY'S DRAWERS**

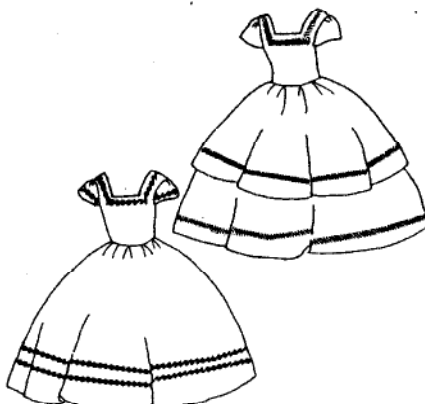
Mid 19th century open crotch with curved leg and button crotch option. Multi-size 6-22

\$12.75

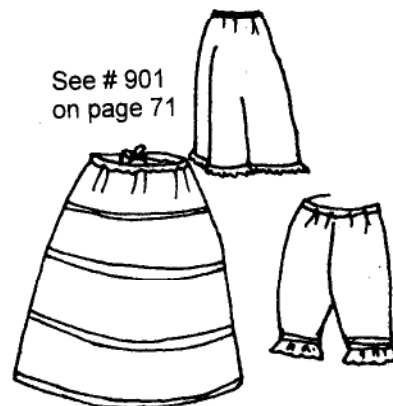
Amazon Drygoods  
1 (800) 798-7979  
411 Brady Street  
Davenport, IA 52801-1518



**304 GIRL'S DRESS & FICHU**  
Oval neckline dress with detachable fichu, optional double skirt. Make it simple or fancy. Girls 4-5-6, 7-8-10, 12-14 \$12.75



**305 GIRL'S WALKING DRESS**  
Simple square neck dress with sleeve caps to wear as is for a party dress or over blouse 309 for a day dress. Girl's 4-5-6, 7-8-10, 12-14 \$12.75



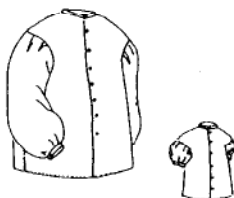
See # 901  
on page 71

**307 GIRL'S UNDERWEAR**  
Trimmed drawers, petticoat and hoop-skirt. Size 4-5-6 has 2 hoops, size 7-8-10 has 3 hoops, and size 12-14 has 4 hoops. \$12.75

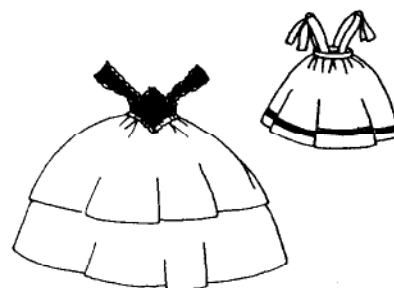


**302 GIRL'S ZOUAVE SUIT**  
Jacket and pointed front skirt to wear with 309 blouse. Girl's 4-5-6, 7-8-10, 12-14 \$12.75

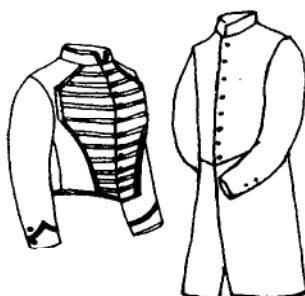
**718B-BOY'S GREATCOAT**  
For the drummer boy in multi-size 12-14 \$13.25



**309 GIRL'S GARIBALDI**  
Long or short sleeves. Multi-sized 4/5, 6/7, 8/10, 12/14 \$12.75



**306 GIRL'S SKIRT & OPTIONS**  
Suspenders or corselet on a single or double skirt, plain or double skirt. Corselet can be made of velvet. Girl's 4-5-6, 7-8-10, 12-14 \$12.75



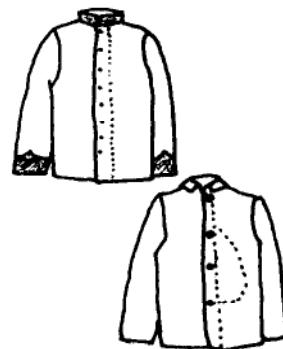
**205 BOY'S SHELL/FROCK**  
Military coats for the little man, comes with instructions to adapt to a musician's coat. Boy's 7-8-10, 12-14 \$11.50



**203 BOY'S SHIRT**  
One button shirt just like adult military issue shirt, simple and quick to make for fast growing boys. Multi-size pattern, 4-5-6-7-8-10-12-14 \$9.25



**202 BOY'S TROUSERS**  
Button fly pants to make long for the older boy or as knickers for the young boy. Boys 4-5-6, 7-8-10, 12-14 \$10.75



**204 BOY'S UNION SACK COAT OR CONF. REGT. COAT**  
Just like the adults jackets, or can be used for civilian. Boys 7-8-10, or 12-14 \$11.25

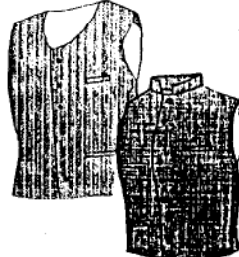
**103 BOONE FROCK**  
Simple everyday dress, original worn by the niece of D. Boone. Held by the Ky. Hist. Soc. Museum. One size only, can be adapted baby to toddler, but no instructions for changing size. \$7.25



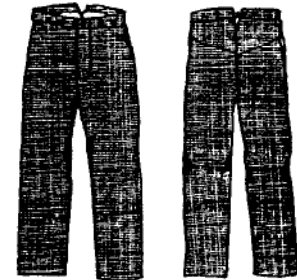
Amazon Drygoods  
1 (800) 798-7979  
411 Brady Street  
Davenport, IA 52801-1518



**716 UNION SACK COAT**  
Basic army issue four button sack, roll collar and left front pocket. Mens 34-36-38, 40-42-44, 46-48-50 \$13.75



**740 MILITARY/CIVILIAN VEST**  
Use wool for the high neck military, or other fabrics for the civilian. Mens 34-36-38, 40-42-44, 46-48-50 \$12.50



**775 MEN'S TROUSERS**  
Military or civilian with choice on inseam or dog ear pockets. Button fly. Waist sizes 28-30-32, 34-36-38, 40-42-44, 46-48-50 \$13.25

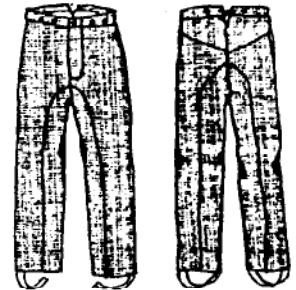


**714 SHELL JACKET**  
Adaptable to many units, both Union and Confederate. Mens 34-36-38, 40-42-44, 46-48-50, 52-54 \$12.25

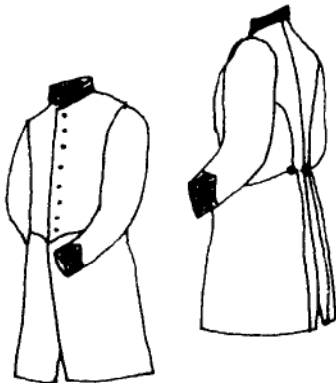


**752 THREE BUTTON SHIRT**  
Everyday civilian shirt, the type most often sent to a soldier from home. Neck sizes 14 15½, 16, 17½ or XXL \$10.75

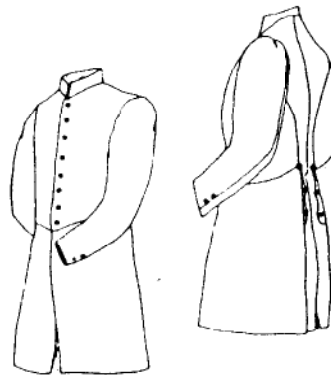
**750 MILITARY ISSUE SHIRT**  
Simple, easy and fast to sew shirt was Government Issue to the Civil War troops. Neck sizes 14, 15½, 16, 17½, or XXL. State size. \$10.75



**774 CAVALRY PANTS**  
Basic cavalry style with inseam panels. Waist sizes 28-30-32, 34-36-38, 40-42-44, 46-48-50 \$14.50



**710 ENLISTED MAN'S FROCKCOAT**  
Basic frock coat used by both Union and Conf. Infantry and artillery units. Mens 34-36-38, 40-42-44, 46-48-50 \$13.75



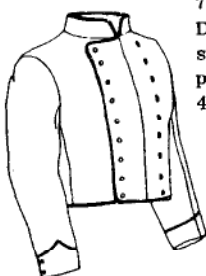
**711 JR. OFFICER'S FROCK**  
Single breasted frockcoat for company officers. Skirt pockets. Mens 34-36-38, 40-42-44, 46-48-50 \$13.75



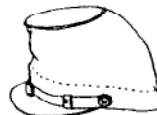
**712 OFFICER'S FROCK**  
Union or Confederate senior officer frock, double breasted, inside pocket and cuff options. Mens 34-36-38, 40-42-44, 46-48-50, 52-54 \$14.50



**718 GREATCOAT**  
A must for winter campaigns. Mens 34-36-38, 40-42-44, 46-48-50 \$16.95



**715 OFFICER'S SHELL**  
Double breasted shell for senior officers, trim and/or pipe as desired. Mens 34-36-38, 40-42-44, 46-48-50 \$13.75



**810 KEPI/FORAGE CAP**  
Instructions for both included. All sizes included. \$10.75 22" through 25½"

**717 CONF. REGIMENTAL COAT**  
Basic 7 button sack coat with stand up collar. Mens 34-36-38, 40-42-44, 46-48-50 \$13.75



Amazon Drygoods  
1 (800) 798-7979  
411 Brady Street  
Davenport, IA 52801-1518

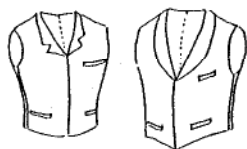




### 703 1860'S DBL. BREASTED FROCKCOAT

For the business or professional man, fully lined. Mens 34-36-38, 40-42-44, 46-48-50

\$17.75



### 741 CIVILIAN VEST

Shawl or step collar, round or point front hem. 34-38, 40-44, 46-50

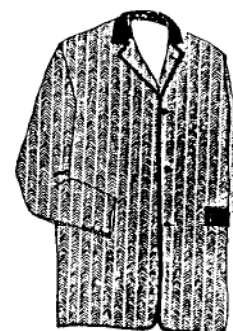
\$13.50



### 770 MEN'S DRAWERS

A necessity under wool pants. Waist sizes 34-36-38, 40-42-44

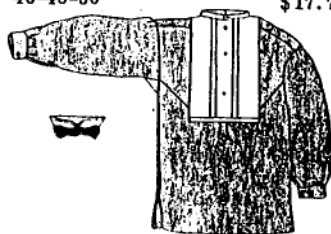
\$12.25



### 701 MEN'S SACK JACKET

Civilian sack suit jacket for the common man, farmer or shopkeeper. Wear over vest. Mens 34-36-38, 40-42-44, 46-48-50

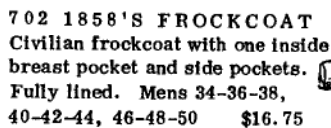
\$14.50



### 753 DRESS SHIRT

1860's dress shirt includes collar and tie. Multi-size 14½ - 17½.

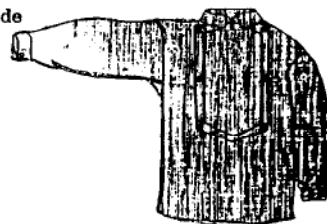
\$12.50



### 702 1858'S FROCKCOAT

Civilian frockcoat with one inside breast pocket and side pockets. Fully lined. Mens 34-36-38, 40-42-44, 46-48-50

\$16.75



### 754 BIB FRONT SHIRT

Popular with Firemen and Militia. Multi-size 14½ - 17½.

\$9.75

## PATTERNS FROM OTHER ERAS



### 420 1770 POLONAISE

Dress and petticoat. Dress has a box pleated ruffle at the neck. Misses 6-8-10, 12-14-16, 18-20-22

\$17.95



### 461 1809 SPENCER JACKET

Two different jackets, one with pleated tail and round collar, the other with ruffles at neck and sleeves.

Misses 6-8-10, 12-14-16, 18-20-22

\$11.50



### 400 CHEMISETTE 1826 - 1835

Wear under 1830 dress. All sizes included.

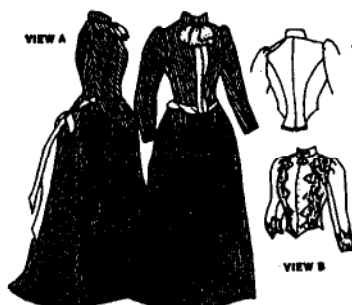
\$3.50



### 440 1830'S DAY DRESS & PELERINE

Slightly high waisted bodice with gigot sleeves and large collared pelerine. Misses 6-8-10, 12-14-16, 18-20-22

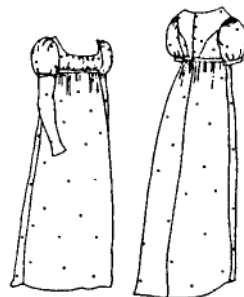
\$16.75



### 490 1889 BUSTLE DRESS

Basic skirt with bustle pad for a day dress or walking suit. Two bodice options, dressy or simple. Misses 6-8-10, 12-14-16, 18-20-22

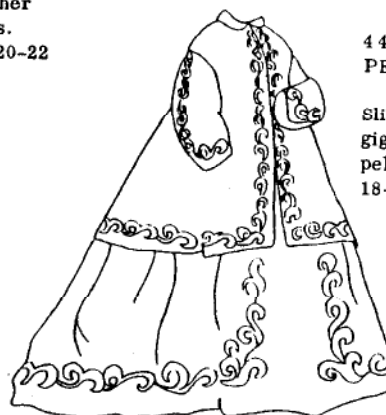
\$17.95



### 460 1809 DAY DRESS

High waisted dress from the Empire period with detachable lower sleeves. Misses 6-8-10, 12-14-16, 18-20-22

\$14.50



### 408 SACQUE JACKET

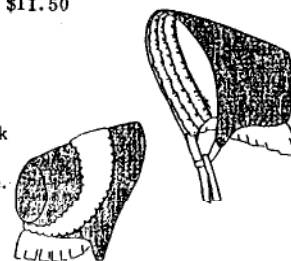
1860's traveling jacket or maternity top with instructions for maternity skirt, Misses 6-8-10, 12-14-16, 18-20-22

\$11.50

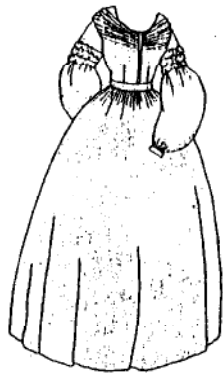
### 817 FABRIC BONNET

1850's style to wear far back on the head, spoon bonnet style with frilled lace inside. One size.

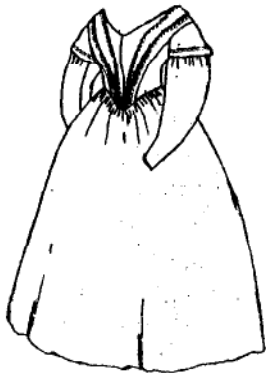
\$10.50



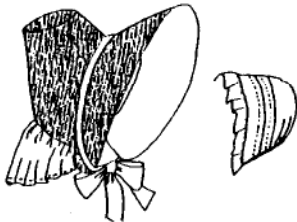
Amazon Drygoods  
1 (800) 798-7979  
411 Brady Street  
Davenport, IA 52801-1518



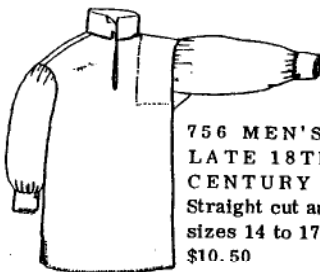
**445 DAY DRESS OF 1837**  
Gathered sleeve top and pleated bertha. Misses 6-8-10, 12-14-16, 18-20-22.  
\$13.50



**447 DAY DRESS OF 1845**  
Sloping vertical pleats narrow the look of the waist. Misses 6-8-10, 12-14-16, 18-20-22.  
\$13.50

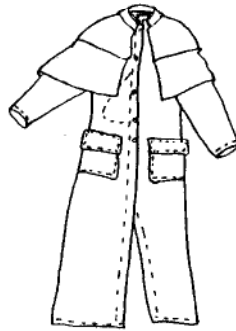


**819 BONNET & CAP 1838**  
A city bonnet and cap to wear under from a Ladies Workbook of 1838.  
\$11.50



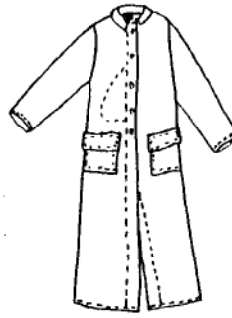
**756 MEN'S WORK SHIRT, LATE 18TH, EARLY 19TH CENTURY**  
Straight cut and gusseted. Neck sizes 14 to 17½ all included.  
\$10.50

### Double Capes



**780 CANVAS DUSTER**  
Mid to late 1800's duster with multiple cape options in S (14½" neck), M (15½"), L (16½"), XL (17½")  
All sizes included.  
\$16.75

### Without Capes



**449 FAN FRONT BODICE**  
1850's style to wear with under-sleeves and 602 Flounced Skirt. Misses 6-8-10, 12-14-16, 18-20-22.  
\$11.50

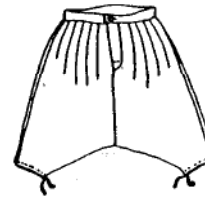
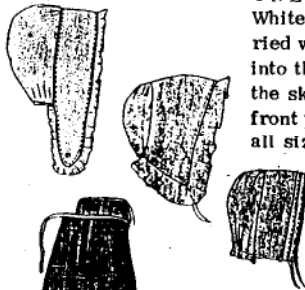


**713 ZOUAVE JACKET & VEST**  
French style jacket and the correct vest. Men's 34-36-38, 40-42-44, 46-48-50.  
\$13.25

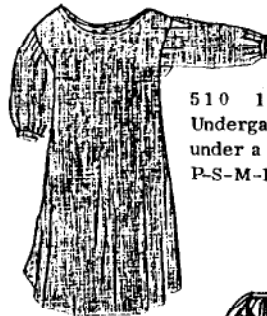


### 815 CAPS & POCKETS FOR THE 18TH CENTURY

White caps were worn by all married women. Pockets were worn into the 19th century but under the skirt, reached through a left front placket. Ladies and Child, all sizes included.  
\$8.50



**773 ZOUAVE PANTS, SASH & GAITERS** Algerian style trouser with sash and gaiters. Men's 34-36-38, 40-42-44, 46-48-50.  
\$14.50



**510 18TH CENTURY SHIFT**  
Undergarment, sometimes also visible under a bodice as a blouse. Ladies P-S-M-L included.  
\$9.75



**745 18TH CENTURY WAISTCOAT**  
The proper cut to wear with breeches. Men's 34-36-38, 40-42-44, 46-48-50.  
\$11.50



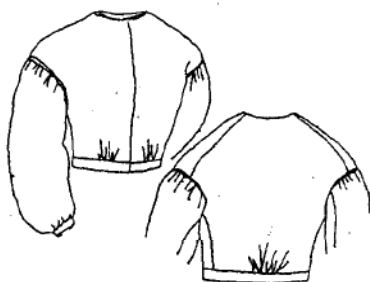
**610 PETTICOAT FOR THE 1740's TO THE 1770's**  
With gathered or pleated waist and optional ruffle worn in several layers and with the top layer tucked up while working. This also served as the outer skirt. All sizes included.  
\$9.75

**776 18TH CENTURY BREECHES**  
Drop front, laced back men's breeches with pockets. Men's 34-36-38, 40-42-44, 46-48-50.  
\$12.00



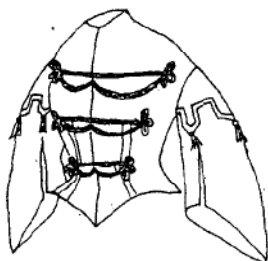
**730 MEN'S 1770**  
Civilian, functional pockets. Men's 34-36-38, 40-42-44, 46-48-50  
\$12.50

## NEW PATTERNS

**418 Gathered Bodice**

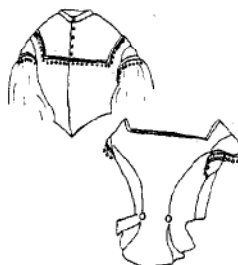
Gathered bodice over a fitted lining. Full and cuffed sleeves, piped neckline, bodice is on a waistband.

Misses S, M, or L \$11.50

**415 Carriage Bodice**

Used for Carriage rides in the park or visiting.

Misses S, M, or L \$11.50

**416 Swiss Body**

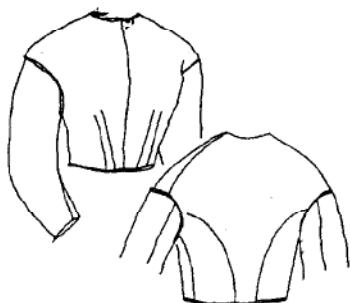
Vest for at home or Day wear, use with 414 Garibaldi body.

Misses S, M, or L \$11.50

**410 Short Sleeve Body**

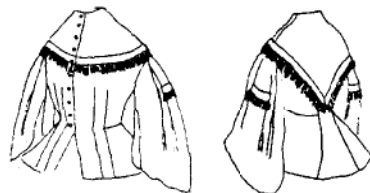
White short sleeved body with front closure and separate velvet suspenders with fancy front piece. Peterson's Jan. 1864.

Misses S, M, or L \$11.50

**417 Fitted Bodice** 1860's

Fitted bodice with easier one piece back from Godey's Lady's Magazine. Fitted coat sleeves with piping at the neck and waist. Excellent basic piece for period look.

Misses S, M, or L \$11.50

**413 Day Bodice with Basque**

Beautiful double inverted pleat at the Top of the half open pagoda sleeve, bodice is skirted.

Misses S, M, or L \$11.50

**903 Bloomer's Bifurcated Ensemble**

Bodice Skirt, Trousers, Collar and Undersleeves sizes XS, S, M, L, XL (all sizes contained) \$14.25

**454 Ladies Sheer Summer Dress**

Made from sheer fabric this is the perfect dress for those hot humid events.

Misses: S, M, or L \$14.95 ~~\$14.60~~

\$14.95

**453 Ladies 1850's-1860's Work Dress**

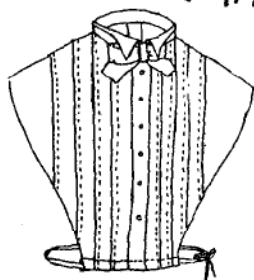
Simple unlined gathered bodice with cartridge pleated skirt, full cuffed sleeves can be rolled up for doing chores.

Misses S, M, L or XL \$11.50

**448 1859 Modified Fan Front Dress**

Basic day dress with pleats to imitate the fan front look. Skirt large enough for a small hoop or without hoops for a camp impression.

Misses S, M, or L \$14.95

**402 Habit Chemisette**

Ladies habit chemisette from Godey's 1861, perfect under riding jacket.

All Sizes in one envelope. \$5.95

**412 Riding Habit**

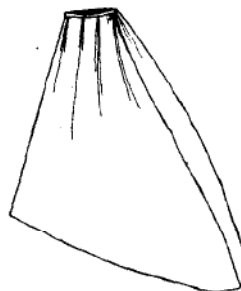
Basic button front riding jacket with or without velvet collar.

Misses S, M, or L \$11.50

**430 1860's Evening Dress w/ Pleated Skirt**

Princess cut low body with pleated skirt.

Misses: S, M, or L \$11.50

**605 Riding Habit Skirt**

Cut generously for use with side saddle. Gored or pleated onto waistband.

All sizes in one envelope. \$14.25

**906 Pleated Skirt**

Size chart, waist measurement

XS-28" S-30" M-34" L-38" XL-42" (all sizes contained) \$11.50

**Amazon Drygoods**  
1 (800) 798-7979  
411 Brady Street  
Davenport, IA 52801-1518

## NEW PATTERNS



**901 Girls Underpinnings**  
Drawers, petticoat and chemise with two neckline options girls sizes 6, 7, 8, 10, 12  
All sizes included. \$11.50



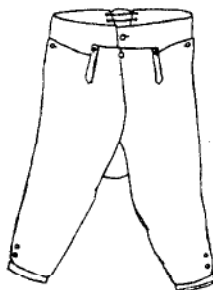
**311 Girls Pleated/Gathered Everyday Dress**  
Misses: S, M, or L \$11.50



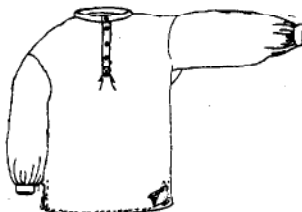
**310 1838 Girls full Body Frock, Slip and Pinafore**  
Simply made frock gathers on drawstrings at the waist and neck, lots of room to grow, comes with slip, and pinafore pattern.  
Girls sized 4-5-6-7 all in one envelope. \$11.50



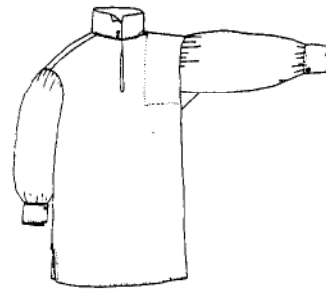
**301 1860's Girls Everyday Dress**  
Gathered front and knife pleated skirt. The original was made in cotton.  
All sizes in one envelope. \$11.50



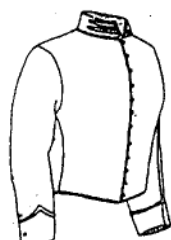
**209 Boys 18th C. Breeches**  
Boys fall front breeches with pockets.  
All sizes in one envelope.  
\$10.00



**207 Boys Band Collar Shirt**  
Boys shirt just like adults.  
Sizes 4-14 all in one envelope.  
\$10.00



**208 Boys Late 18th C. Shirt**  
Made just like the Men's work shirt. It has either a reinforced shoulder or an epaulet.  
All sizes in one envelope. \$10.00



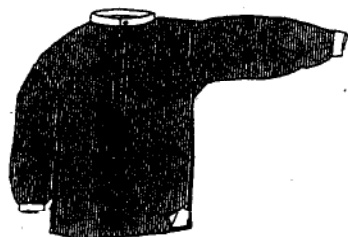
**719 Mounted Service Jacket**  
Shell jacket for union Cavalry, Artillery and Mounted Rifles. Men's S, M, or L \$14.25



**902 Toddler Boys Suit**  
Pantaloons, Jacket and Blouse  
"Style of Dress for boys, when they are of that awkward age too young to be breeched and too old to wear frocks and pinafores." Peterson's November 1861  
sizes 2T, 3T, 4 and 5 (all sizes contained) \$11.50



**206 Little Boys French Blouse and Trousers**  
Little Boys French Blouse in poplin with slanted placket opening, velvet trimmed.  
Little boys knee length trousers button at side. The toddler's sizes 2T-3T have extra room for diapers.  
Belt, collar, and undersleeves not included in pattern.  
Boys 2T, 3T, 4, 5, 6 all sizes in one envelope.  
\$10.00



**755 Band Collar Shirt**  
Three Button shirt with stand-up collar to wear alone or with paper or purchased collar buttoned to it. All sizes in one envelope. \$11.50



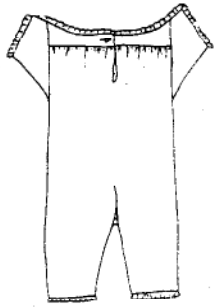
**704 1840's Double Breasted Frockcoat**  
Men's civilian double breasted frockcoat dated 1843.  
Men's S, M, or L \$14.25

**Amazon Drygoods**  
1 (800) 798-7979  
411 Brady Street  
Davenport, IA 52801-1518



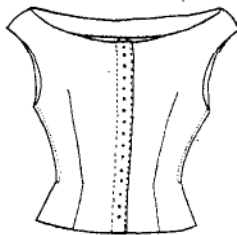
**904 U.S. Infantry Major's Frockcoat**  
From the collection at Perryville Battlefield  
Sizes 38-40-42-44-46 (all sizes contained) \$14.25

## NEW PATTERNS

**509 Non Pareil Garment**

Garment combines the drawers and chemise, it is perfect for equestrians, travel and hot weather.

Misses S, M, or L \$10.00



**502 Underwaist Work Stays** with boning to the waist line from Godey's 1853.  
Misses: S, M, or L \$10.50

**608 Hooped and Overpetticoat**

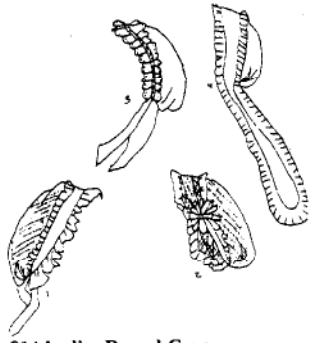
Hooped petticoat made with steel hooping and fancy tucked petticoat to wear as an over/under petticoat.

All sizes in one envelope. \$11.50

**607 Corded and Tucked Petticoats**

A corded petticoat also called a stick out petticoat and a fancy tucked petticoat to wear over or under the corded petticoat.

All sizes in one envelope. \$11.50

**814 Ladies Round Caps**

A collection of four caps taken from Godey's. Great for covering short or modern hairstyles. Made from net or cotton.

\$10.75

**507 1860's Wrapper**

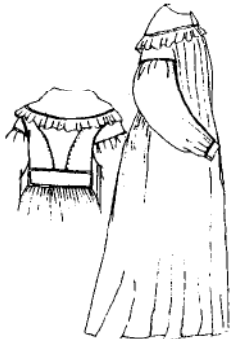
The original is held by the KY His. Soc. Loose fitting, the bottom is 108" around. A perfect companion to the 508 Nightgown. The front may be simplified with plain front panels.

Misses All sizes in one envelope. \$10.00

**508 1860's Plain or Fancy Nightgowns**

The original is held by the KY His. Soc. can be made with all the tucks and ruffles or simplified.

Misses S, M, L or XL \$10.00



**905 Night Dress & Night Cap** with Tucked or Plain Yoke and Tucked or Plain Cuff Options Cap with tucked or plain brim.  
Sizes XS, S, M, L, XL (all sizes contained) \$11.50

**442 1837's Robe Front Daydress**

The silhouette of this day dress implies it's use during and between pregnancies. May be gathered in with an apron or a sash.

Misses: S, M, or L \$14.95

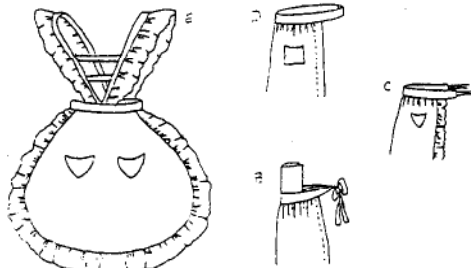


**464 Ladies Bibb Front Muslin Dress** 1800-1812. Misses: S, M, or L \$11.50

**443 1828 Daydress**

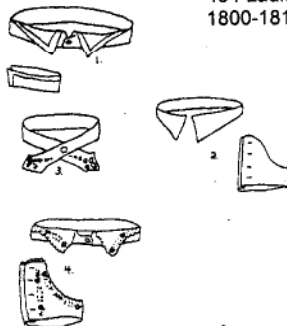
Gathered bodice, slightly high wasted, with moderately puffy sleeves, fitted at wrist.

Misses S, M, or L \$14.25

**506 Aprons Plain or Fancy**

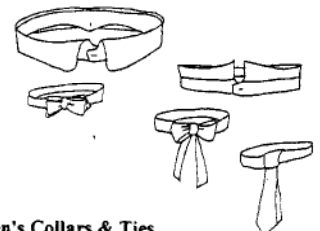
Variety of aprons ranging from the 1740's to the 1860's, plain, ruffled, bibbed, on drawstrings or with ties, several pocket options are included.

All sizes are in one envelope. \$9.50

**399 Ladies Collars and Cuffs**

A collection of plain or embroidered collars, fold over or tack at neckline styles of collars with matching cuffs.

All sizes in one envelope. \$5.95

**700 Men's Collars & Ties**

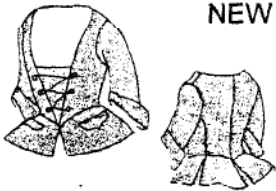
A collection of collars and ties, made from cotton, linen or silk. Used with band collar shirts-755.

Neck sizes 14 1/2- 18 1/2 \$5.95

**Amazon Drygoods**  
1 (800) 798-7979  
411 Brady Street  
Davenport, IA 52801-1518



## NEW PATTERNS



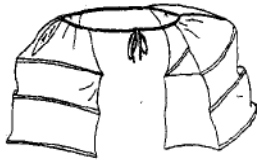
**424 1735-1740 Open Front Jacket**  
Fitted open front jacket held closed with laces. Stomacher pattern included to go under front laces. Sleeve has large cuffs option.  
Misses S, M, L, or XL \$10.00



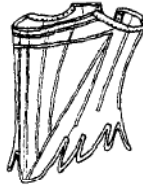
**423 1740 Shortgown**  
Simple unfitted jacket for undress with or without drawstring at the waist.  
All sizes in one envelope. \$10.00



**421 1760-1755 Jacket**  
This jacket has a simple one piece sleeve with more wearing ease for a better fit. The front and side back are one piece encompassing the armhole.  
Misses S, M, L or XL \$10.00



**512 1760-1775's Pocket Hoops**  
Small side hoops with slit openings on top to utilize for pocket space.  
One size fits all. \$10.00



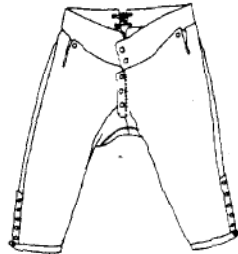
**511 1760-1770's Half Boned Stay**  
Half boned stays can also be full boned and/or covered to match the dress.  
Misses S, M, or L \$10.00



**422 Robe a la Francaise**  
Full flowing sack back gown and petticoat are made to be worn over pocket hoops.  
Misses S, M, or L \$15.50



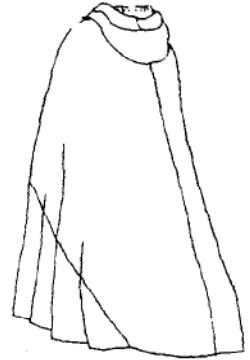
**733 1812 Officer's Coatee**  
Copied from an original worn by Jarvis Jackson held by the 'Arsenal' in Frankfort, KY.  
Men's S, M, or L \$12.95



**778 French Fly Breeches 1730-1770's**  
Men's French Fly Breeches.  
Men's S, M, or L \$12.95



**731 1770's Dress Coat**  
Men's 18th century dress coat with pocket flaps and cuffs.  
Men's S, M, or L \$12.95



**425 1770- Cloak with Hood**  
Simple circular mid calf length cape with hood, hooks at the neck.  
All sizes in one envelope. \$11.50



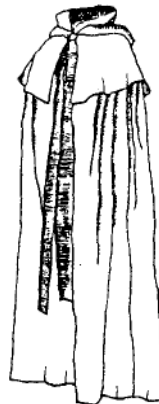
## PEG 3 CLOAKS

All sizes Printed in each Pattern

**OUTDOOR WRAPS - 18TH & 19TH Century.**  
The basic Cloak, Cape, and Mantle may be adapted to the Echarpe, Grecian Cloak, Burnoose, Pelerine, Talma, Pelisse, Purdessus, and Paletot. Do your own research and then adapt this pattern. Three styles shown in all sizes are included in one pattern.

Pattern - \$21.95

Amazon Drygoods  
1 (800) 798-7979  
411 Brady Street  
Davenport, IA 52801-1518



Shaker

## Shaker Cloak Pattern

Shaker Workshops West has duplicated the pattern of an American classic: the Shaker Cloak. Originally sewn by Sister Dorothy Durgin of the Canterbury, New Hampshire, community, this handsome, hooded cape became so popular. Mrs. Grover Cleveland ordered one from the New Lebanon community for her husband's second inauguration. Its classic lines made it a fashion footnote from the late 1800's through the 1920's. Patterns and full instructions, including a materials list, are printed on heavy blueprint paper.

The traditional colors are Taupe, Dark Grey, Burgundy, Forest Green or Deep Red. Cape, hood, and inside pockets are lined. The traditional length was a few inches off the ground. A classic for any era.

Pattern - \$32.50



# Old World Enterprises

Measurements for these patterns are the same as modern sewing patterns or see the size chart on page 64. Seam allowance on all patterns is  $\frac{1}{2}$ " unless otherwise stated.

Years of research and experience with authentic period garments have led to the creation of these patterns. Old World Patterns are original creations that faithfully represent the prevalent fashion trends of each period - from the basic silhouette to the most meticulous details and construction techniques.

A brief introduction to the fashion trends of the period, fabric and trim suggestions and full instructions are included in each pattern.

The patterns are multi-sized, including all sizes listed in each pattern.

WOMEN - Sizes 8, 10, 12, 14

MEN - Sizes 38, 40, 42

## Empire

The bodice of the gown is gathered gently around the neckline as well as rib cage. Tiny puffed sleeves are gathered into small bands. The gown has a center back hook and eye closure and may be constructed with or without a train. Suggested embroidery designs are included. (Circa 1805)

#801 - \$12.95



## EMPIRE

## 1836 Romantic Gown

The one piece gown has a center front hook and eye closure, with a small section of shirring to the left and right of the closure at the waistline. The bodice is set on a foundation. The collar and sleeve flounces can be embellished with either contrasting or self-fabric. The rectangular skirt is set onto the bodice with cartridge pleats that are distributed evenly around the body. Moderately full sleeves are gathered onto an upper sleeve body that is eased into the armhole. Petticoat instructions are included.

#831 - \$13.95



## ROMANTIC



## 1825 Romantic Gown

A one piece gown with a center front hook and eye closure. The skirt is cut in gores with gathers across the center back at the waistline. Puffed sleeves are set onto a band that extends over a moderately fitted long undersleeve. The wide collar is set onto the bodice. Pleated fabric is set onto a neckband, forming the neck ruff. Petticoat instructions are included.

#821 - \$12.95

## Romantic Accessories

This pattern includes the following: A fabric bonnet with back gathered flounce and embellishment, a shawl with flounces and a center front clasp, and a parasol cover. Suggestions for the parasol frame are included.

#830A - \$10.95



## 1840 Romantic Ball Gown

The fitted bodice of this gown is set off by a Bertha collar made of lace and embellished at the center front with a single flower. The center back opening can either be laced or employ a hook and eye closure. The pleated skirt is gathered at the center back. Petticoat instructions are included.

#841 - \$15.95

**AMAZON'S INSTRUCTIONS ON HOW TO CHANGE THE SIZE OF A PATTERN, LARGER OR SMALLER**  
Complete instructions on "grading" patterns to any size (changing the size to either larger or smaller, to any other size or sizes) including men, ladies, women, children or teen. Instructions can be used on any pattern from Amazon as well as on modern pattern styles. Set of Instructions. . . . \$5.00

Amazon Drygoods  
1 (800) 798-7979  
411 Brady Street  
Davenport, IA 52801-1518

## ROMANTIC

75



### 1830's Romantic Male Shirt

The shirt features a tucked section that buttons down the front and has a high collar set off by a large cravat. The sleeves drop from the shoulder and are very wide, ending in a wide cuff. Both collar and cuffs are removable. There is a back yoke.  
# 832 MS - \$10.95



### 1850's Crinoline Ballgown

An off the shoulder gown with a lace or fabric flounce running around its perimeter. The fitted bodice is fully boned and sweeps to a point at the center front waist, which is embellished with flowers on ribbon pillows. The gown has a center back opening that can either be laced or employ a hook and eye closure. The neckline is trimmed with flowers that are set onto ribbon cushions. Lace or fabric flounces fall from the sleeve cap. The large skirt is bell shaped, gathered at the waistline, and features two wide flounces that can be made exclusively of fabric or overlaid with lace as pictured. The lace mitt pattern is included, as is the hoop skirt pattern.  
# 851 - \$14.95

### 1830's Romantic Male Suit

The fitted frock coat is of medium length and has gently flaring skirts that move into two deep pleats in the back. The trousers are moderately narrow. The fully lined vest has a low, rounded cut with a collar.  
# 832 M - \$15.95

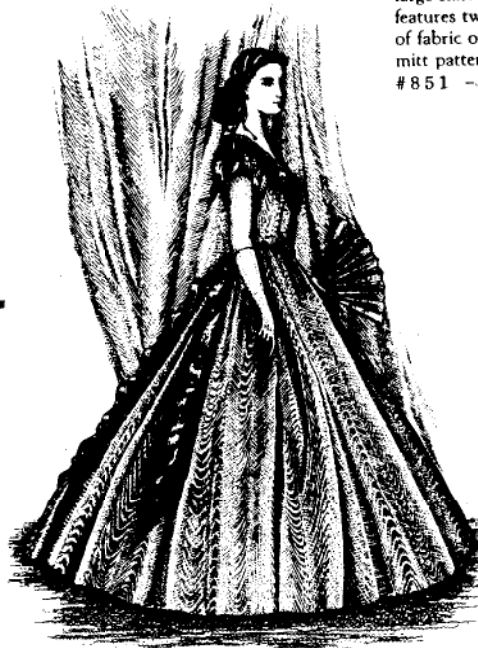
## CRINOLINE



### 1860's Crinoline Walking Gown

A two piece gown featuring large pagoda sleeves with shoulder flounces which are set into the armeye with three large pleats at the shoulder cap. The bodice has a center front button closure. A small stand-up collar is achieved by attaching a gathered ruffle to the neckband. The large skirt is pleated and has a slight train in back. A false sleeve pattern is included, as is the pattern for the hoopskirt.

# 861 - \$14.95



### 1860's Crinoline Ballgown

The very fitted boned bodice of this gown has a front button closure. The neckline has a contrasting band of fabric upon which chevrons are set, holding pillows of contrasting fabric with a ball button in the center. The sleeves are accented by mock epaulettes and lace. The large skirt is pleated and gathered and is set off by three large chevrons that fall from the back of the bodice. The chevrons are embellished with a center ribbon upon which pillows and buttons are attached. A pattern for the hoop skirt is included.  
# 863 - \$14.95



Amazon Drygoods  
1 (800) 798-7979  
411 Brady Street  
Davenport, IA 52801-1518

PLAN AHEAD! Personal checks are allowed to clear two weeks. Money Orders or Credit Card charges will speed your order.



### 1860's Crinoline Ballgown

The gown has little puffed sleeves that are placed on a supporting band. A pinked flounce moves around the neckline, embellished with lace and narrow beading lace that has a tiny ribbon running through it. The bodice is very fitted and has a shaped belt that moves to a point in the center front. There is a center front closure that employs tiny buttons. The very large skirt has a double pinked flounce moving around its perimeter. A bow that flows down the length of the skirt is mounted on the gown at the center back. A pattern for the hoopskirt is included.

# 862 - \$14.95



### 1860's Male Dress Shirt

The shirt has a back yoke with front gathering at the shoulders. The sleeves are of medium width. The high collar folds into sharp points at the immediate front. A tie pattern is included.

# 861 MS - \$10.95

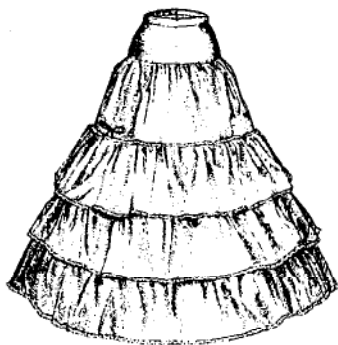


### 1860's Male Evening Suit

A suit featuring a fitted frock coat with lapels that extend out sharply toward the shoulders. It is form fitting with a fully lined vest that is cut high with a rounded collar. The tails move into a double pleat at the center back. The trousers are of moderate width in cut. Some knowledge of tailoring is recommended.

# 861 M - \$14.95

## CRINOLINE



### Crinoline Hoop Skirt

This pattern is offered for those that want a hoop skirt and do not wish to order a gown. The hoopskirt features a dropped waist that is smooth across the front. There is a base upon which the tiers of flounces are affixed. On the interior, casements run along the seam lines into which the hoops are fed. The hemline and each flounce are embellished with lace. There is a center back closure.

# 860 HS - \$10.95



### 1860's Female Outer Wrap

The wrap has two tiers set off by scalloping that is faced. Falling from both of the tiers are flounces that can be made either of self-fabric or of lace as pictured. There is a center front hook and eye closure.

# 860 A - \$10.95



### 1860's Male Cape

A three-quarter-length cape with a stand-up collar. It features a triangular section that is set onto the top, with the point of the triangle falling to the center back of the cape. The front is closed with oversized frogs.

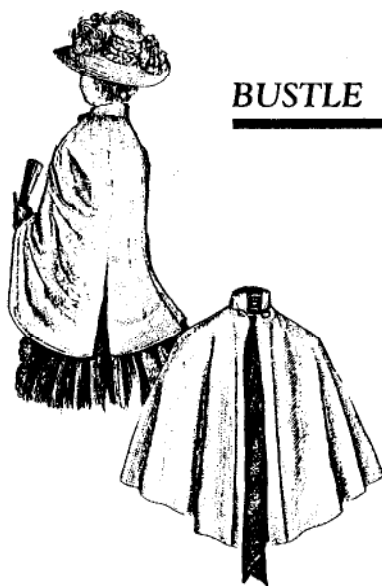
# 860 MA - \$12.95

Amazon Drygoods  
1 (800) 798-7979  
411 Brady Street  
Davenport, IA 52801-1518

**1870's Bustle Walking Dress**

The dress is a two piece garment featuring a fully boned bodice. The bodice has a center front closure and skirts which flare at the center back to accent the bustle. The skirt and overskirt are gathered at the waistline and sides. A flounce trimmed with lace and ribbon sets off the bottom of the skirt. The sleeves have flounces that drop just below the elbow and are also trimmed with lace and ribbon. Bustle and petticoat instructions are included.

#871 - \$14.95

**BUSTLE****1880's Bustle Female Everyday Outerwrap**

A three-quarter length wrap featuring a stand-up collar embellished with a ribbon. It is fully lined and has a hook and eye center front closure. The center back is open in two sections to accommodate a bustle.

#881A - \$10.95

**1880's Bustle Walking Gown**

The two piece gown has a fully boned bodice with a buttoned closure at the center front. The front insert, cuffs, collar, front swag and bustle are made of contrasting fabric. The skirt hemline is embellished with ruching topped with faced scallops and ribbon trim. Bustle and petticoat instructions are included.

#881 - \$15.95

**1880's Bustle Female Evening Outerwrap**

The fully lined wrap features an elaborate beaded overlay. Full instructions for this overlay are included; they do not require any special knowledge of beading. The outerwrap has a center front hooked closure with a ribbon tie.

#882A - \$14.95

**1880's Bustle Ballgown**

A two piece gown which has a fully boned bodice with a center back opening that can be laced or hooked. The neckline is embellished with lace and a corsage of flowers and ribbon on the left shoulder. Ruching and lace embellish the sleeves. The skirt is pleated into the belt with a bustle made of contrasting fabric trimmed with ruching and lace. The sides of the skirt are trimmed with vertical drops of fabric that in turn are trimmed with ribbon. The skirt hemline is embellished with ruching, lace and ribbon. A bustle pad pattern as well as bustle and petticoat instructions are included.

#882 - \$15.95

Amazon Drygoods  
1 (800) 798-7979  
411 Brady Street  
Davenport, IA 52801-1518



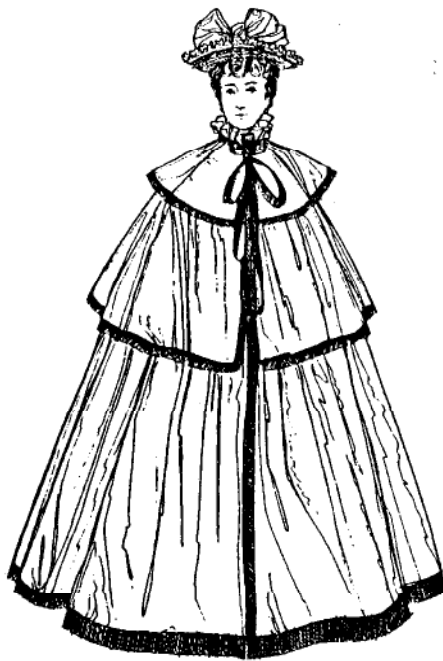
## 1890's



### 1890's Ballgown

A gown having a two piece fully boned bodice with a center back closure that can be laced or hooked. The center front bodice insert is made of contrasting fabric to which a large beaded ornamentation is added. The large sleeves and neckline are embellished with dagging. The skirt falls smoothly from the hips and has a center back closure. It is trimmed with a contrasting fabric that moves up the skirt into points that are embellished with beaded ornamentation. Full beading and petticoat instructions are included.

# 892 - \$15.95



### 1890's Female Evening Cape

A very full, floor length cape with two tiers. Each tier is embellished with ribbon applied to the edges. The hooked front closure and ruffled collar are set off by a large ribbon bow. The cape is fully lined. It can also be constructed with a single tier.

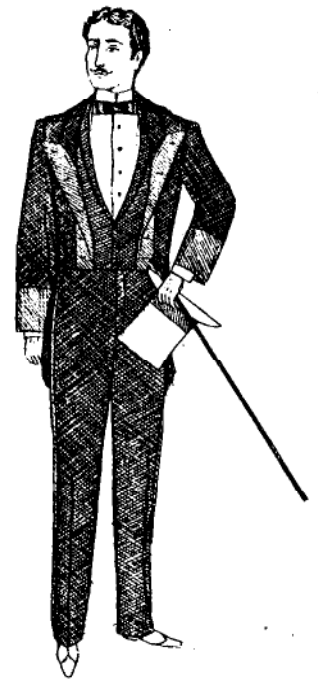
# 890 A - \$14.95



### 1890's Male Evening Shirt

This shirt features a yoke in the back and small gathers in the front at the shoulders. The front closure is double stitched with tiny buttons down the front. The collar is moderately high and split in the center front.

# 892 MS - \$10.95



### 1890's Male Evening Suit

A fitted suit with front lapel extensions of a contrasting fabric. The frock coat sweeps into tails that are curved away from the body with a double pleat in the center back. Large cuffs of contrasting fabric are placed on the sleeves. The trousers are cut in a narrow fashion and have a stripe of contrasting fabric up the outside leg seam.

# 892 M - \$14.95



### 1890's Walking Dress

A fully boned two piece gown featuring large interlined sleeves that are pleated into the armseye. The jacket has a center front closure. The gored skirt lies flat at the waistline with a center back closure. Placement for the suggested lace applique is clearly described. Petticoat instructions are included.

# 891 - \$14.95

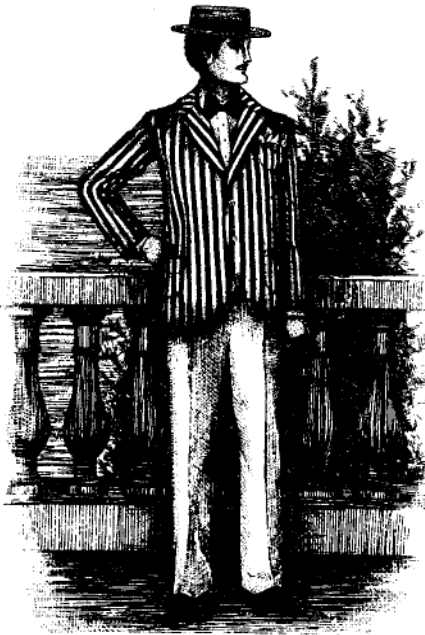


### 1890's Male Evening Cape

The full floor length cape is fully lined. A large partially gathered collar falls into points in the front. A braided cord of contrasting color runs around the neck and falls down the front of the cape into large tassels. There is a hooked center front closure.

# 890 MA - \$14.95

Amazon Drygoods  
1 (800) 798-7979  
411 Brady Street  
Davenport, IA 52801-1518



#### 1890's Male Casual Shirt

The shirt features a back yoke with gathered lower bodies. The front of the shirt has gathers at the shoulders with a double stitched center front closure. The moderately high collar is rounded, as are the cuffs. Both collar and cuffs are detachable. Tie not included.

#891MS - \$10.95



### 1890's

#### 1890's Male Sporting Suit

A semi-fitted jacket with trousers of contrasting fabric. The jacket features three pockets and can be lined or unlined. The trousers are of moderate width in cut. Hat not included. Some knowledge of tailoring is recommended.

#891M - \$14.95

#### 1890's Bicycle Suit

A two piece, fully boned, double breasted sporting suit having large sleeves with sleeve proper. The bloomers are gathered at the waistline and lower cuffs and have a center back opening. The gaiters button down the outside of the leg and have a strap that goes under the shoe. Patterns for the large bow and sporting hat are included. A blouse pattern is not included.

#894 - \$15.95



#### 1890's Gibson Girl

The shirtwaist of this dress is set off by chevrons of contrasting fabric that are optional. The starched collar and cuffs are removable. Little pleats fall from the bodice front shoulders down into the gathering at the waistline. The skirt has a center back closure and is cut in gores that fall from a smooth waistline gathered at center back. It is embellished with optional chevrons. The tie pattern is included, as well as petticoat instructions. A hat pattern is not included.

#893 - \$14.95



#### BATHING COSTUME FOR THE 1860's . . . . . \$14.95

Four piece outfit consists of Bloomers, Skirt, long sleeved Bodice and two tiered Cape. Instructions are given for oil-ed silk Bathing Caps. A history and explanation of the healthful activity of "bathing" is included, as well as illustrations of six other 1860's Bathing Costumes. Includes very detailed sewing instructions. This is a set of pattern diagrams that are to be enlarged to the desired size. It is not a full size pattern. Arm slits are not as illustrated - they are placed high, so that hat may be held on with hands.

Amazon Drygoods  
1 (800) 798-7979  
411 Brady Street  
Davenport, IA 52801-1518