

Yardages here listed may vary by size of pattern, width of fabric, and height of person. It is best to have the pattern before final purchases.

Past Patterns



#001-1830's, 40's STAYS

One piece with back lacing, shaped with added gussets. A wood busk is used. View A - Wedding stay is lightly stiffened with hand quilting. View B - Corded stay substitutes cording for boning, gives firm control. Both are available as complete kits listed elsewhere.

Multi-size 10-20 \$14.00

A - 1 yd cotton drill
B - 1 1/8 yds linen



#003-1830's, 40's FULL HIGH GOWN
High waist gown with dropped shoulders and "gigot" sleeves. Before 1836 hem at ankle length, after to the instep. Wear with Day Cap "B" and Peterine shown on page 37.

Multi-size 10-20 \$16.00



#008-SMALL FALL TROUSERS, 1830-40

Three styles, pleated, straight and "Cossack." All for dress or work. Includes how to fit a "bellied" man, and optional weaving instructions for the fabric.

Multi-size waist 28-42 \$15.00
2 3/4 yds. wool, cotton or linen



#002-1830's, 60's SIMPLE CHEMISES

Two versions shown worn properly under the corset. Simple T-shape with gussets. Personalize with embroidery - original designs and alphabet included.

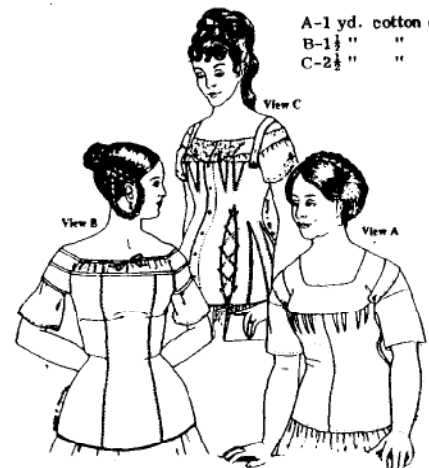
Multi-size 10-20 \$14.50

All patterns have been drafted from original garments in public and private collections. The illustrated instructions include historical notes on the original garment, owner, style, fabric and sewing techniques. In many cases both original and modern techniques are given.

Patterns are either multi-sized (all sizes included) or individually sized as described. Do not order the size you wear in readymade clothing. Please check your measurements against the size chart and order accordingly.

For a larger illustration of any of these patterns please send 50¢ per illustration and one LSASE.

	SIZES	10	12	14	16	18	20
1 Bust		33	34 1/2	36 1/2	37 1/2	39 1/2	41
2 Waist		25 1/2	27	28 1/2	30 1/2	31 1/2	33 1/2
3 Hip		35 1/2	37	38 1/2	40	41 1/2	43 1/2
4 Front Waist Length		17	17 1/2	17 1/2	18 1/2	18 1/2	19
5 Upper Arm Width		10 1/2	11	11 1/2	11 1/2	12 1/2	12 1/2
6 Back Length		15 1/2	16	16 1/2	16 1/2	16 1/2	16 1/2
7 Neck		13 1/2	13 1/2	14 1/2	14 1/2	14 1/2	15 1/2
8 Sleeve Length		22 1/2	22 1/2	22 1/2	22 1/2	23	23
9 Men's Sizes		36	38	40	42	44	46



A-1 yd. cotton drill
B-1 1/2 " " "
C-2 1/2 " " "

#705-1820 - 1876 SERVICEABLE STAYS

Two non-boned corsets, easy to make and wear. Also a "gestation" or maternity corset with nursing gussets.

Multi-sized 10-20 \$14.00



#708 CORSET 1845-1864

Closes in front and laces in back. Set-in gussets give shape. Kit available.

Multi-size 10-20 \$12.00
7/8 yds. heavy cotton sateen

PATTERNS ARRANGED CHRONOLOGICALLY
SHIPPING ADDITIONAL TO ALL PATTERNS

Amazon Drygoods
1 (800) 798-7979
411 Brady Street
Davenport, IA 52801-1518

**#802 SUNBONNET**

Two versions, plain or fancy.

Adult. \$7.50

#803 HONEER DRESS 1850's, 60's

Dropped shoulder yoke, unusual two piece sleeve, self waistband and attached full skirt. May be worn with undersleeves.

Multi-size 10-20. \$15.50

Sunbonnet-3/4 yds. calico
Dress-5 3/4 yds. cotton printCotton Sheeting
Drawers-2 1/8 yds.
Petticoat- 3 1/3 yds.
Chemise-3 yds.Bodice-2 1/2 yds.
Skirt-5 3/4 yds.**#801 FAN FRONT BODICE 1850's**

Shirring goes into the front drop of the bodice. Hair or capped long sleeves.

All sleeves on the 700 & 800 series bodices are interchangeable.

Multi-size 10-20. \$19.50

#800 SKIRT 1850's

Single and flounced styles included.

Multi-size 10-20. \$19.50

**#702 FITTED BODICE 1860's**

The classic bodice of the period with full or modified pagoda sleeves, undersleeve pattern included.

Multi-size 10-20. \$14.50

2 1/3 yds.

#706 PETTICOAT & DRAWERS 1850-60's

Full, open seam drawers and petticoat with corded hemline for stiffness. Embroidery designs included.

Multi-size 10-20. \$18.00

#707 CHEMISES 1850-60's

Two style choices trimmed with tucks or embroidery, designs included.

Multi-size 10-20. \$14.50



Yardages here listed may vary by size of pattern, width of fabric, and height of person. It is best to have the pattern before final purchases.

**#704 BALL GOWN BODICE 1860's**

Gored, no darts for a smooth fit. Two styles of short sleeve. Use skirt 700 or 800.

Multi-size 10-20. \$14.50

Bell sleeve-2 1/8 yds.

Ruff sleeve-4 3/8 yds.

**#709 GARIBALDI SHIRT 1860's**

Choice of waistband or longer drawstring waist. Fancy ribbon tie and braid designs included. Wear under a Zouave jacket, shown elsewhere.

Multi-size 10-20. \$14.50

2 7/8 yds. cotton or wool

**#703 CORSET 1860's**

Front closing, back lacing, gored and boned. Straight sewing, no gussets. Complete kit listed elsewhere.

Multi-size 10-20. \$11.00

1 1/2 yds. cotton drill

#701 SOFT BODICE 1860's

Gathered or pleated front with a choice of tailored peg-top sleeves or soft bishop sleeves.

Multi-size 10-20. \$14.50

#700 SKIRT 1860's

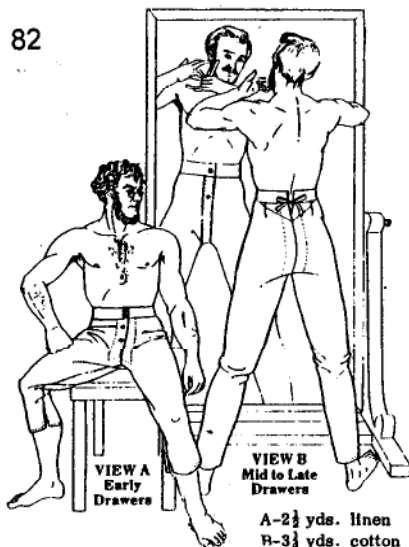
Gathered cartridge pleats or double inverted pleats on the basic over-hoop skirt with optional hem flounce. Modern reenactors prefer an added width of fabric.

Multi-size 10-20. \$14.50

Bodice-2 yds.

Skirt-7 1/8 yds.

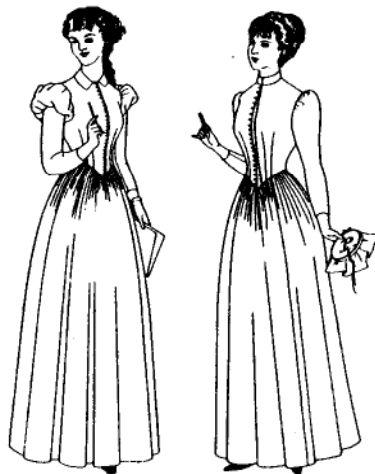
Amazon Drygoods
1 (800) 798-7979
411 Brady Street
Davenport, IA 52801-1518



#006 MEN'S 19th CENTURY DRAWERS

A long shirttail was all the underwear the average man wore. Wool and leather are more comfortable with drawers.

View A is early 19th century. View B is full length for the 1840's, 50's & 60's. Multi-size waist 32-42. . . . \$14.00



#903 SIMPLE DRESS 1880's

A simple pointed bodice with a choice of two collars and two sleeve styles. Hidden fan and watch pocket.

Multi-size 10-20. . . . \$23.00
6½ yds. wool or calico

#900 EQUESTRIENNE SKIRT 1880-97

Long and elegantly draped for side-saddle riding.

Multi-size 10-20. . . . \$28.00

#901 EQUESTRIENNE TROUSERS

Properly worn under the 900 skirt.

Multi-size 10-20. . . . \$18.00

#902 EQUESTRIENNE BODICE

It was said that a properly boned and fitted riding habit gave any woman a perfect figure. Button front, tailed back.

Multi-size 10-20. . . . \$18.00

Skirt-3½ yds. 60" wide
Trousers-1 5/8 yds. 60"
Bodice-1½ yds. 60" wide



A-4 yds.
B-3 3/4 yds.

#007 MID 19th CENTURY DRESS SHIRT

View A is traditional with dropped shoulder, gussets and detachable collar.

View B is more fitted and without gussets. Six different pleated fronts included.

Multi-size chest 34-50. . . . \$16.00
Book, "The Art of Tying the Cravat" \$4.95



#710 TROUSERS 1851-1876

Infantry, Cavalry and Civilian included. Historical notes and diagrams for a custom draft or for larger sizes.

Multi-size waist 32-38. . . . \$24.00

New!

#713 trousers (same as 710) sizes 40-52 \$24.00



#711 HOMESTEAD DRESS 1860's

The "prairie" or "pioneer" dress of the frontier and rural areas. Graceful goared back. Waistline formed by tied on apron (not included). Excellent style for maternity dress.

Multi-size 10-20. . . . \$18.00
7 yds. calico



View A



#904 FANCY DRESS 1880's

Choice of bib front insert or open square neck on a long tunic over tiers of ruffles.

Multi-size 10-20. . . . \$30.00
Tunic & ruffles-4½ yds.



Amazon Drygoods

1 (800) 798-7979

411 Brady Street

Davenport, IA 52801-1518



#213 VICTORIAN CORSET

The "hour-glass" silhouette in a completely boned corset, useful for most of the Victorian era. Available in a complete kit listed elsewhere.

Multi-size 10-20. . . . \$11.00
1 yd. cotton coutil or sateen



#301 WEDDING OR DINNER GOWN 1890's
Best in heavy damask or moire'. Leg-o-mutton sleeves pointed at the wrist. Small bows trim the closing of the back bodice. Bodice only, use #208 skirt on page 69. Multi-size 8-20 \$20.50



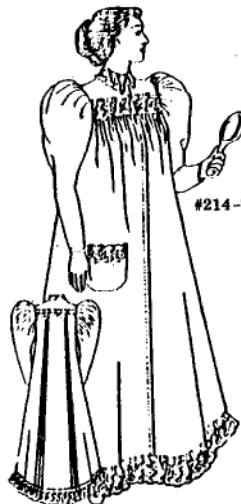
#206 BALL, TEA OR DINNER GOWN 1890's
Button front bodice with lace overlay may be made high or square necked. Border lace makes graceful ribbon-held sleeves. Individual sizes 10-16 \$32.50



#303 WEDDING GOWN 1885
Tight bodice laced with silk cord and trimmed with Belgian lace collar and cuffs. Multi-size 10-16 \$35.00
10 1/3 yds. silk faille



#202 PRACTICAL PROMENADE 1890's
What appears to be a blouse is an attached "front." The skirt is a classic 7 gore walking skirt. Multi-size 10-16 \$18.50



#214-7 1/8 yds. cotton

#214 MOTHER HUBBARD NIGHTGOWN
1895 style with leg-o-mutton sleeves and eyelet trim. Multi-size 10-20 \$21.00



#203 FANCY PROMENADE SUIT 1890's
The bolero jacket has a false "front", not a blouse. The belt is attached to the jacket side seams. Five gore walking skirt with attached bias flounce. Multi-size 10-16 \$21.00

#211 TEA GOWN OR WRAPPER 1890's
Ruffled yoke, balloon sleeves, snug waist in front and Watteau pleated back. This style was worn as an indoor gown in the East, but the frontier ladies adopted it for practical everyday wear, even in "good silk" for Sunday. Multi-size 10-18 \$23.00
10 yds.



#212 ERETRIA BLOUSE-WAIST 1890's
Light silk or cotton shirred at neck and shoulder with full bishop sleeves. Waist, neck and sleeves are finished with ribbon. Multi-size 10-18 \$17.00
3 3/4 yds. cotton

If yardage is not shown there are too many variations to list. Pattern should be ordered before fabric purchase.

PLAN AHEAD! Personal checks are allowed to clear two weeks. Money Orders or Credit Card charges will speed your order.

Amazon Drygoods
1 (800) 798-7979
411 Brady Street
Davenport, IA 52801-1518

**#104 STREET COSTUME 1905**

Trimmed and detailed suit with pleated skirt, lacy bodice and separate bolero jacket. Original was black Marquisette.

Individual sizes 10-16 \$36.00

**#107 EDWARDIAN COMBINATION**

One piece undergarment in two versions. Petticoat with waistband or circular drawers with drawstring.

Multi-size 10-20 \$17.00
4 1/8 yds. cotton or silk

**#103 TEA GOWN 1902**

High necked bertha collar over unique "Renaissance" sleeves. Remove the detachable chemisette with high choker collar for a round neck gown.

Multi-size 10-16 \$29.50

**#109 PETTICOAT**

Edwardian styles need the sweep and fullness of a proper petticoat in either taffeta or cotton. Corset cover shown is from #108.

Multi-size 10-20 \$19.50

If yardage is not shown there are too many variations to list. Pattern should be ordered before fabric purchase.

**#106 EDWARDIAN CORSET 1902**

Straight fronted corset for the fashionable "Grecian Bend" posture. Also available as a complete kit, listed elsewhere.

Multi-size 10-20 \$12.00
1 1/4 yds. cotton coutil or sateen

**#108 EDWARDIAN CORSET COVERS**

Four different styles, all closed at center front, fitted with drawstring ribbons.

Multi-size 10-20 \$17.00

#117 FRENCH DRAWERS

Open or closed French flared drawers either darted or fitted with a drawstring.

Multi-size 10-20 \$19.50
2 7/8 yds. cotton

**#114 MOTHER HUBBARD NIGHTGOWN**

Timeless style for Flannel or Nainsook.

Multi-size 10-16 \$19.50

**#201 LADY'S CLOAK 1900**

Elas cut cloak with decorative overlay collar trim in cutwork technique.

Multi-size 10-16 \$22.50



Amazon Drygoods
1 (800) 798-7979
411 Brady Street
Davenport, IA 52801-1518



#112 PRINCESS GOWN 1900
Dinner, reception or wedding gown with lace overlay, soutache braid and ruching on bodice and demi-trained skirt.
Multi-size 10-16 \$23.00
5 2/3 yds. silk plus lace overlay



#105 GIBSON BALL GOWN, 3 parts
Three patterns that must be ordered separately. A-Skirt. B-Sleeveless low neck Bodice. C-Long sleeved high neck Bodice. The original was silk organza with shirred ribbon trim.
Individually sized 10-16
A-Skirt \$19.50
B-Sleeveless Bodice \$10.00
C-Long Sleeve Bodice \$16.00



#207 SIDE CLOSING BODICE - 1890's
Small leg-o-mutton sleeves, tapering bodice gives the illusion of a tiny waist.
Multi-size 8-20. \$14.50
#208 MULTI PURPOSE SKIRT - 1890's
Circular skirt swept to back, flattering to all and easy to sew. For #207 & more.
Multi-size 8-20. \$14.50

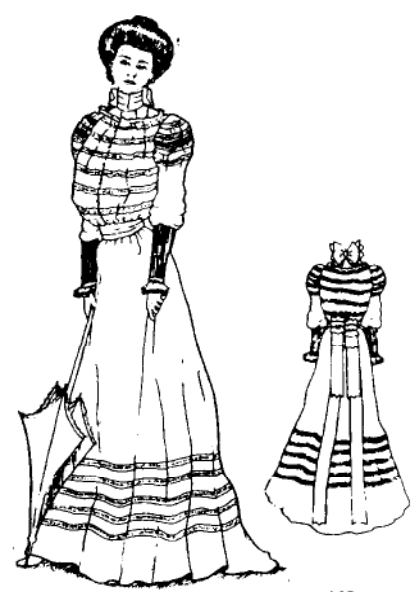


#100 MUSLIN GOWN 1905
Original was Dotted Swiss with many delicate details, lace inserts, tucking, flounces and ruffles.
Individual sizes 10-16 . . . \$30.00

If yardage is not shown there are too many variations to list. Pattern should be ordered before fabric purchase.



#101 DAINTY GOWN 1905
Bertha collar on a lace bodice front. Worn without the lace chemisette it is a low neck gown. Trained skirt.
Multi-size 10-16 \$32.00



#102 ORGANDY AND LACE 1905
High neck gown with lace inserts and leg-o-mutton sleeves tucked from elbow to wrist. Gathered skirt, back bow.
Multi-size 10-16. \$29.00



#210 EDWARDIAN DRESS JACKET 1900
Tailored and trimmed with black wool braid.
Multi-size 10-18 \$14.50
2 2/3 yds light wool



#113 SPECTATOR JACKET 1907
Top stitched seams, fly front closing and unusual cartridge pleated sleeves.
Individual sizes 10-20 \$17.00
3 1/2 yds. light wool.

Amazon Drygoods
1 (800) 798-7979
411 Brady Street
Davenport, IA 52801-1518



#111 GENTLEMAN'S SACK SUIT 1903

Three piece suit includes vest. This style was worn throughout the decade in wool or linen.

Multi-size chest 36-42 \$19.50



#200 GENTLEMEN'S CAR DUSTER

Made of "Duck" or "Drill" for motoring. Large pockets with slits, center back seam slit up from hem.

Multi-size chest 36-42 \$19.00

(The hat shown is available in tan cotton twill complete with loops for goggles. S.M. or L \$42.00 + post. The hat is not a Fast Patterns product.)



#302 WEDDING OR DAY GOWN 1907

Very simple dress trimmed on the bodice with applique lace, and on the collar and cuffs with ribbon ruching.

Multi-size 10-16 \$19.00
7 3/8 yds silk



#300 WEDDING OR AFTERNOON GOWN

Surprisingly simple 1906 pattern. Unlined bodice with bertha collar, Swiss style belt and nicely detailed skirt.

Multi-size 10-16 \$32.00



#806 LOWELL MILL GIRL'S DRESS

1820-1840 A graceful Dress & Peterline in two versions. Wear over #001 Corset & two corded petticoats, #706 p. 65, also chemise and drawers.

Multi-size 8-20 \$23.00
7 3/4 yds. Calico, Challis, Silk

NEW!

1820 - 1840



#406 TUCKED SIDE CLOSURE WAIST

1910 style tailored with soft ruffle touches and tucks on bodice and sleeves.

Multi-size 10-20 \$12.00

3 yds. silk, linen or cotton

#400 SHIRTWAIST 1914

Box pleat closing, tucks over the shoulder. Deep cuffs and high neck.

Multi-size 10-18 \$12.00

2 5/8 yds. shirting or silk



#405 TUCKED SHIRTWAIST 1910

Two styles with finely tucked bodice, both front and back and tucked sleeves.

Multi-size 10-20 \$12.00

2 3/4 yds. cotton net or sheer



#404 GIBSON TUCK BLOUSE 1910

Quick and easy with simple embroidery or 5 optional lace insert designs.

Multi-size 10-20 \$12.00

2 1/2 yds. nainsook



#403 HIGH NECK BLOUSE 1910

Both French hand sewing and machine techniques, 5 optional lace insert designs.

Multi-size 10-18 \$12.00

1 3/4 yds. nainsook

Amazon Drygoods
1 (800) 798-7979
411 Brady Street
Davenport, IA 52801-1518



#501-3 1/2 yds. silk
#500-2 1/8 yds. silk

#501 COMBINATION 1920's

Camisole top attached to short slip and panties.

Multi-size 10-20 \$13.00

#500 STEP-IN CHEMISE 1920's

One piece, double straps, tucked back.

Multi-size 10-20 \$11.00



#502 SLIP ON BLOUSED DRESS 1926

Circular cape top pointed in back to match drapery on skirt. Optional long sleeves.

Multi-size 10-16 \$19.50

6 1/2 yds. silk crepe



#503 SLEEVELESS DRESS 1926

Two circular skirt flounces dip at back. Separate scarf.

Multi-size 8-20 \$19.50

5 5/8 yds. silk crepe



#395 WEDDING GOWN 1930

Self trimmed silk organza with its own bias cut slip.

Multi-size 10-16 \$26.50

5 1/4 yds.



#603 SKIRTS 1930's

Smooth 6 gored skirts with walking ease in two styles.

Multi-size 10-18 \$14.50

1 3/4 yds.



#602 JACKETS 1930's

Single breasted, semi-fitted in two styles.

Multi-size 10-18 \$13.50

2 1/2 yds.



#601 SMOCKED NIGHTDRESS 1930's

Smocking on neckline, waistline and optional long sleeved cuffs. Smocking transfer not included.

Multi-size XS, S, M, L . . . \$17.00

4 yds. voile or silk



#304 WEDDING GOWN 1939

Smooth, bias cut satin gown with lace trim yoke, collar, cuffs and train.

Multi-size 10-16 \$26.50

5 yds. satin.

CORSET KITS

Kits contain pattern, fabric, trims, busc, stays, laces, eyelet setting tool (if needed). Patterns only are available in the preceding pages.

For individually priced stays, buscs, laces, bone tape and bone tubing, see Amazon General Catalog.

#001 - View A 1830-40 Natural Drill \$49.95

#708 - 1845-64 Deluxe Ivory Cotton Sateen \$37.95

#703 - 1863 Natural Drill \$49.95

#213 - 1890 White Cotton \$79.95

#106 - Edwardian White Cotton \$65.95

Corset Kits are Multi-size EXCEPT for #213. Order by size from chart below.

BODY MEASUREMENTS BY INCHES FOR CUP SIZES B, C & D

Size	8	10	12	14	16	18	20
Bust	32 1/2	33 1/2	35	36 1/2	38	39 3/4	41 1/2
Waist	24 1/2	25 1/2	27	28 1/2	30	31 3/4	33 1/2
Hips	34 1/2	35 1/2	37	38 1/2	40	41 3/4	43 1/2
Back Length	16 1/2	16 3/4	18	18 1/4	18 1/2	17	17 1/2

Corset Kits are not pre-cut.



Amazon Drygoods
1 (800) 798-7979
411 Brady Street
Davenport, IA 52801-1518



#807
Wrapper

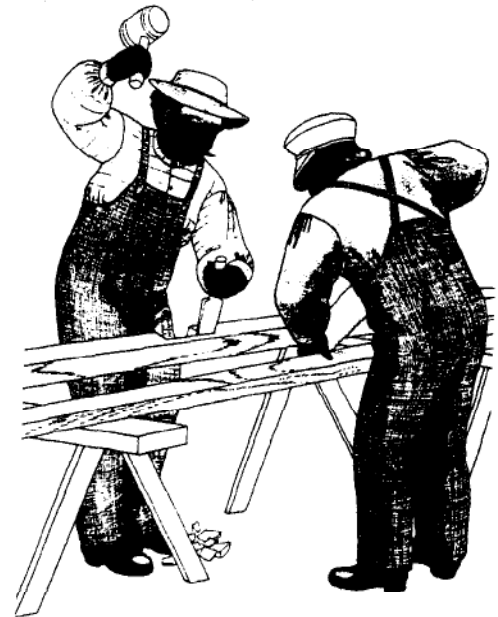
Date: Mid 1850s to 1860s
Multi-Sized: 8-26, B, C & D Cups
Fabric: Approx. 7 Yds. 45"
Pattern: \$20.50

#808
Sack and Petticoat

As used here -
"Sack" means a blouse.
"Petticoat" is a skirt.
"Wrapper" is a robe.



Date: 1860s
Multi-Sized: 8-26, B, C & D Cups
Fabric: Approx. 7-1/2 Yds. 45"
Pattern: \$18.00

#910 1870s to 1901 Bib Overalls
Only \$20.95.

The *Historical Notes*, included in the pattern, introduce you to never before published images and documentation. Past Patterns traces apron front (bib) overalls from 1838 to 1901 using art, daguerreotypes, extant 19th century apron front overalls, pattern drafting manuals, mail order and wholesale catalogs, advertising and United States government documents.

The pattern is multi-sized, waist 32-52. In 45" wide fabric, waist size 32 requires 2-7/8 Yds.; waist size 36 requires 3-1/8 Yds.; waist size 40 requires 3-1/4 Yds.; waist size 44 requires 3-1/3 Yds.; waist size 48 requires 3-3/8 Yds.; waist size 52 requires 3-1/2 Yds.

#712
Hoop Skirt

Date: Late 1850s to mid 1860s
Sizes SM, MD, LG, XLG & XXL
Fabric: Approx. 6 Yds. 45"
Pattern: \$24.00

At last! #712 is one hoop for all occasions - 105" for day dresses, with a button-on flounce of 136" for other gowns.

#808 is a comfortable ensemble for the home or for streetwear. The #807 wrapper is a house gown or robe.

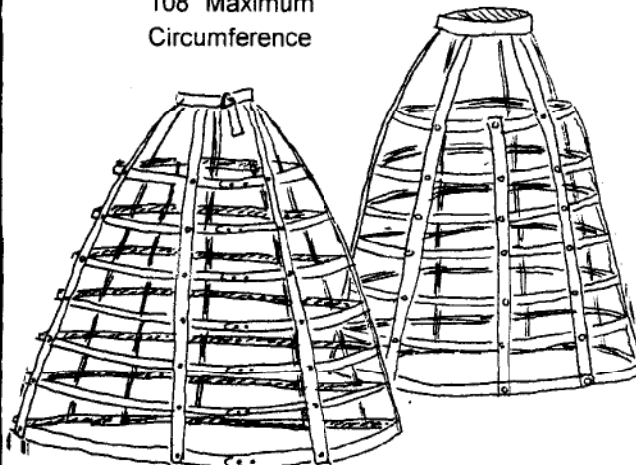
New corsets - and look at the size ranges for these wonderful new patterns! 8 through 26 all in one pattern!

#720
Madam Foy
Skirt Supporting Corset

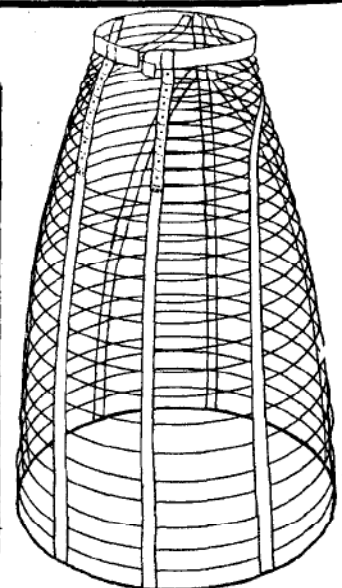
Date: 1862-1867
Multi-Sized: 8-26, B, C & D Cups
Fabric: Approx. 2 Yds. 45"
Pattern: \$10.95

7-Tier Hoop Kit
1860-1866

108" Maximum
Circumference

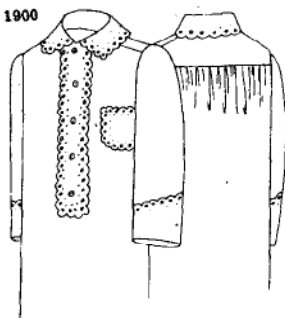


KIT only, not a pattern \$75.00



Cage Crinoline Booklet only,
not a pattern \$7.95

ca 1900

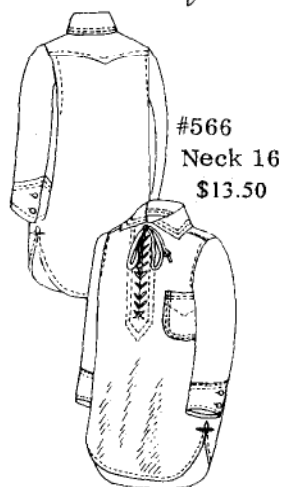


#637
Large
\$13.50

#1487
Medium
\$13.50

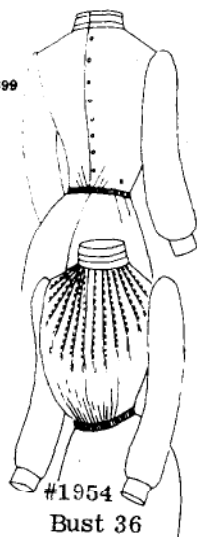


1902-05
#7168
Bust 34
\$21.50



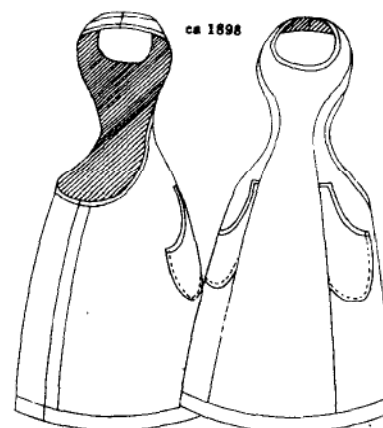
#566
Neck 16
\$13.50

ca 1899



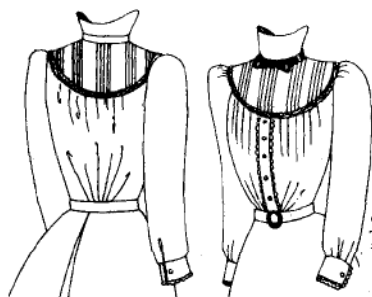
#1954
Bust 36
\$13.50

6277B
Bust 36
\$13.50
ca 1898



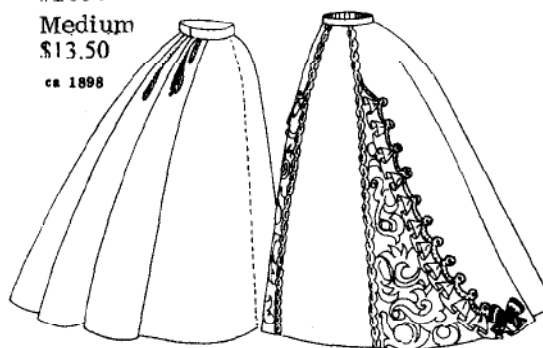
#993
Medium
\$12.00

FOR FURTHER INSTRUCTIONS -
Complete instructions on "grading"
patterns to any size (changing the
size to either larger or smaller,
to any other size or sizes) includ-
ing men, ladies, women, children
and teen. Instructions can be used
on any pattern from Amazon as well
as on modern pattern styles.
Set of instructions \$5.00



ca 1899
#1687
Bust 36
\$13.50

#1097
Medium
\$13.50
ca 1898



Amazon Drygoods
1 (800) 798-7979
411 Brady Street
Davenport, IA 52801-1518

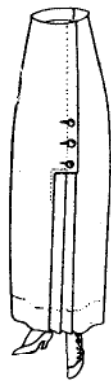
"Attic Copies" patterns are duplicates of original sewing patterns and are available in ONE SIZE ONLY as listed by each illustration.

The pattern you will receive is a reproduction of the original. The instructions have been duplicated exactly as they were originally printed.

An experienced seamstress can enlarge or reduce these patterns by following the pattern alteration instructions included with each one.

The pattern size and price are listed by each pattern. Shipping is additional.

Attic Copies 1901-1910



ca 1910
#4795
Waist 22
\$13.50



1910
#4416
Bust 35
\$17.50



1910-14
#2315
Bust 32
\$13.50



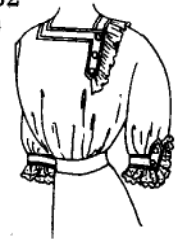
1910-14
#3472
Bust 35
\$18.00



#6329
Bust 36
\$13.50



#5731
Bust 32
\$13.50
1911



1911-14
#5068
Bust 34
\$11.50



1911-14
Tea Gown
#8109
Bust 38
\$16.00



1911-13
#3139
Bust 38
\$16.00

1912
#5433
Bust 38
\$17.50



1912
#5155
Bust 36
\$17.00



#5436
Bust 34
\$16.00



1911



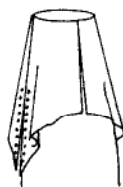
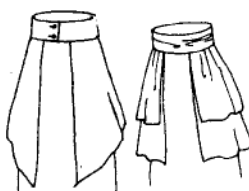
1911-14
#4746
Bust 32
\$14.00



Sailor Suit
1911-14
#5873
Bust 32
\$17.00



PLAN AHEAD! Personal checks are allowed to clear two weeks. Money Orders or Credit Card charges will speed your order.



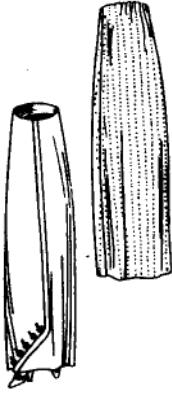
1912-14
#9922
Waist 26
Hip 39
\$11.50

**Attic
Copies**
1911-1920

Amazon Drygoods
1 (800) 798-7979
411 Brady Street
Davenport, IA 52801-1518



1912-13
Redingote or Coat
#7146
Bust 34
\$12.50



1912-13
#6259 Waist 22
Hip 37
\$16.00



1913 Cape-Wrap
#7244
Bust 44
\$16.00



1913 Cape-Wrap
#7244
Bust 44
\$16.00

1913 Cape-Wrap
#7244
Bust 44
\$16.00



1913 Cape-Wrap
#7244
Bust 44
\$16.00



1913
#7074
Bust 34
\$25.50



1913
#8211
Bust 38
\$16.25



1913
#8480
Bust 38
\$17.00



#6930
Waist 26
Hip 40
\$13.50

1913



1913
#5462
Waist 26
\$13.50



1913
#7035
Waist 26
Hip 39
\$15.00



1913
#6909
Waist 22
Hip 37
\$16.00



ca 1914
#4971
14 Years
\$16.00

1911-1920



1914
#6987
Bust 38
\$18.00



1914
#6053
Bust 44
\$19.00



1914
#3373
Bust 32
\$19.00



Overall Suit
#7281
Medium
\$14.50



Bathing suit
#5102
Bust 36
\$15.00

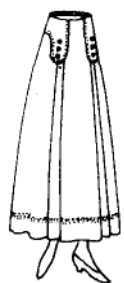


1914

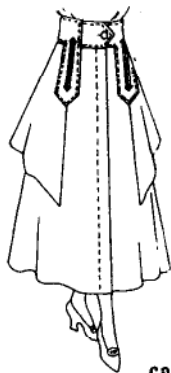


#5655
Bust 36
\$13.50

Amazon Drygoods
1 (800) 798-7979
411 Brady Street
Davenport, IA 52801-1518



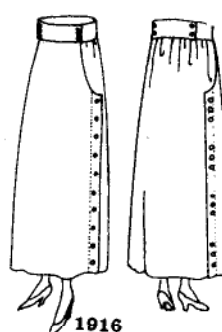
1915
#9003
Waist 28
Hip 42
\$17.00



ca 1915
#9384
Waist 26
\$13.50



#9206
Bust 34
\$12.00



1916
#9682
Waist 25
Hip 39
\$16.50



1916-18
#8714
Bust 36
\$17.50



1916-18
#7417
Bust 38
\$17.50



1916-18
Bloomer Dress
#8767
Bust 38
\$17.00

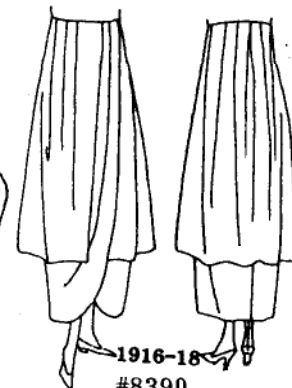
ca 1915



1916-18
#7477
Waist 25
Hip 39
\$17.00



1916-18
#6587
Bust 38
\$16.00



1916-18
#8390
Waist 24
Hip 39
\$16.50



1917



#9056
Bust 38
\$11.00



1917
#9395
Bust 38
\$13.50



1916-18
#8613
Bust 34
\$13.50



1917
#7683
Bust 34
\$13.50



#9025
Bust 36
\$13.50
1917



1917
#8933
Bust 38
\$13.50



Pajamas & Cap
#846
Bust 38
\$25.50

#8643
Bust 38
\$13.50



1911-1920

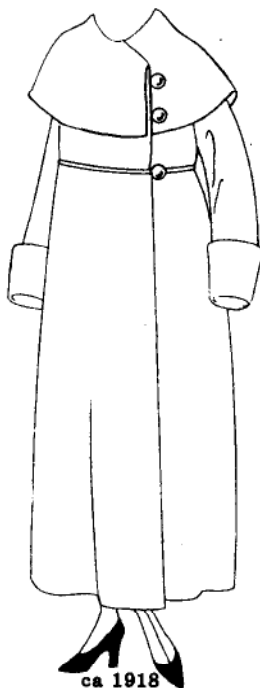
Amazon Drygoods
1 (800) 798-7979
411 Brady Street
Davenport, IA 52801-1518



1918
#9127
Bust 38
\$18.00



1918
#1880
Bust 36
\$16.25



ca 1918
#9467
Bust 38
\$18.00



#9225
Bust 36
\$16.00
1918



1918-19
#7947
Waist 22
Hip 37
\$16.20

1911-1920



1919
#8159
Bust 34
\$19.50



1919
#9751
Bust 38
\$17.00



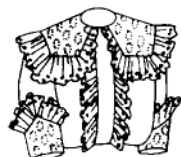
1919
#8450
Bust 34
\$14.00



1919
#8322
Bust 34
\$18.00



1919
#7987
Bust 36
\$19.00



#6764
3 years
Bust 22
\$13.50

Attic Copies

Children 1900-1940



#1445
4 years
\$13.50

#100
8 years
Bust 26
\$13.50



#200
10 years
\$8.50



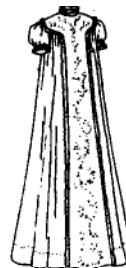
#2319
12 years
Bust 30
\$13.50



#7096
12 years
Bust 30
\$16.00



#2614
10 years
Bust 28
\$17.50



#1066
Infant
\$12.00



#5457
8 years
Bust 26
\$16.00



#9317
10 years
\$13.50

Amazon Drygoods
1 (800) 798-7979
411 Brady Street
Davenport, IA 52801-1518



#300C
10 years
Bust 27
\$12.00



#1923
6 years
Bust 24
\$14.50



#1792
4 years
Bust 22
\$16.00



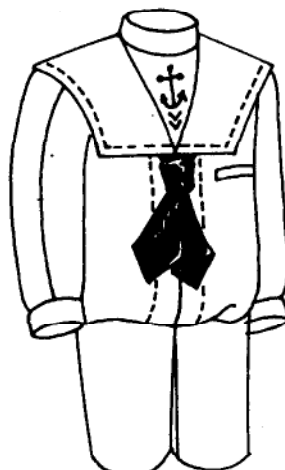
#2469
9 years
Bust 26
\$14.50



#6522
8 years
Bust 25
\$14.50



#3065
6 years
Bust 24
\$16.00



#8609
Bust 22 3/4
\$16.00

FOR FURTHER INSTRUCTIONS
Complete instructions on "grading"
patterns to any size (changing the
size to either larger or smaller, to
any other size or sizes) including
men, ladies, women, children and
teens. Instructions can be used on
any pattern from Amazon as well
as on modern pattern styles.
Grading Instructions . . . \$5.00

Children 1900-1940



#1662
2-8 years
Multi-size
\$14.50



#6108
Size 6
Bust 25
\$13.50



#2943
1 year
Bust 20
\$19.50



#9865
4 years
Bust 23
\$17.00



#3939
Size 6
Bust 24 1/2
\$13.50



#3597
Size 1
Bust 20
\$13.50

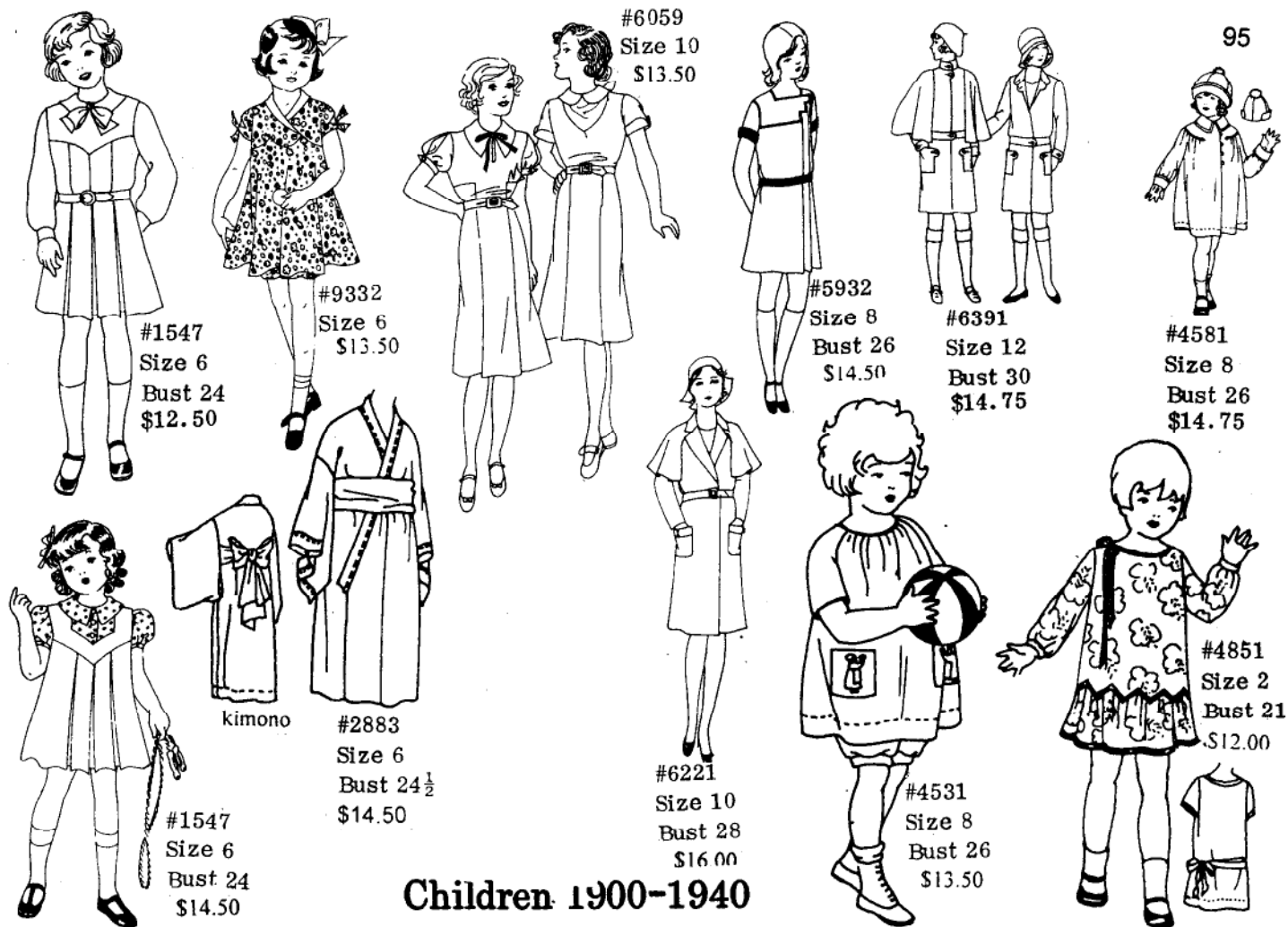


#3354
Size 8
Bust 26
\$13.50



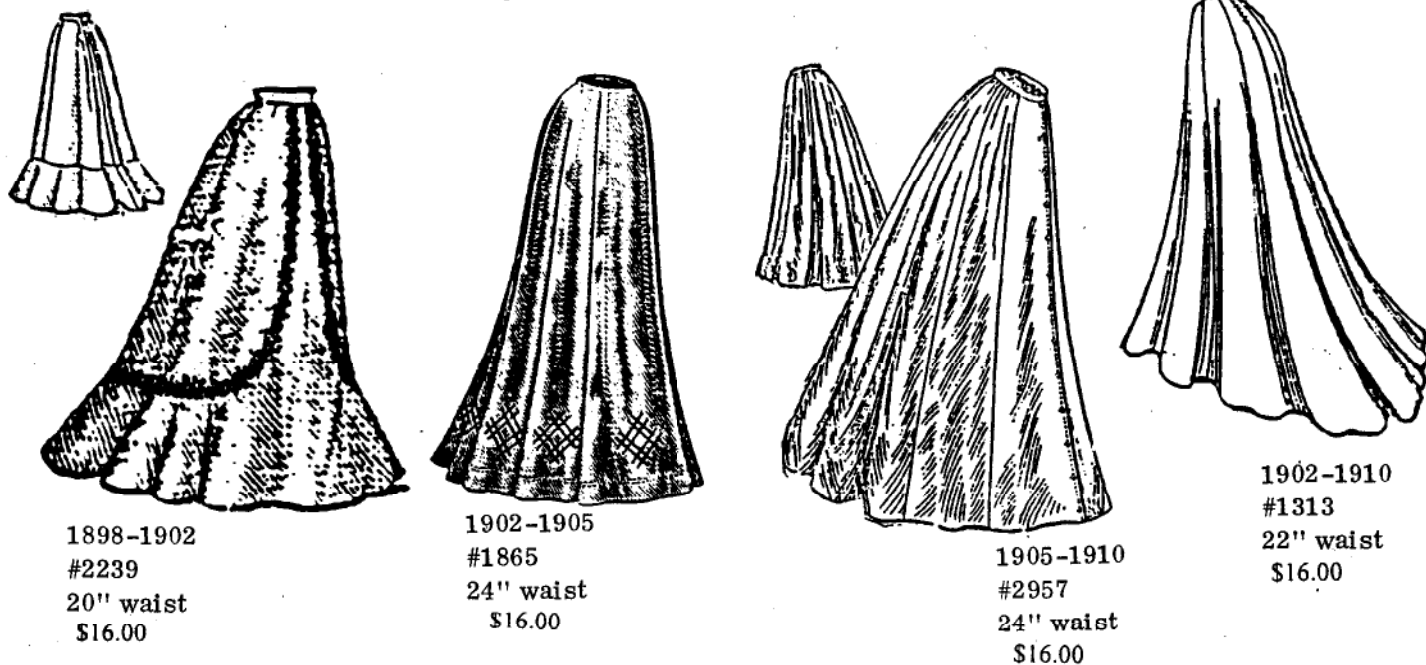
#3838
Size 4
Bust 23
\$13.50

Amazon Drygoods
1 (800) 798-7979
411 Brady Street
Davenport, IA 52801-1518



Children 1900-1940

NEW ATTIC COPY SKIRTS

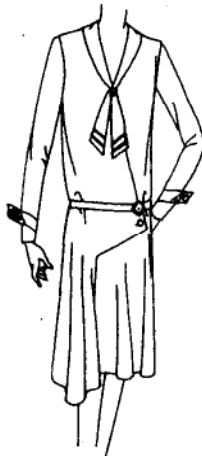


Amazon Drygoods
1 (800) 798-7979
411 Brady Street
Davenport, IA 52801-1518

#3429
Bust 36
\$14.50



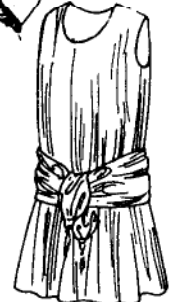
#6193
Bust 38
\$16.00



#6129
Bust 38
\$16.00



#6109
Bust 38
\$17.50



#7696
Bust 40
\$16.00
mid 1920's

#6940
Bust 38
\$13.50



#4560
Bust 38
\$16.00



#8087
Bust 40
\$16.00



#4678
Bust 37
\$16.00

FOR FURTHER INSTRUCTIONS -
Complete instructions on "grading"
patterns to any size (changing the
size to either larger or smaller,
to any other size or sizes) includ-
ing men, ladies, women, children
and teen. Instructions can be used
on any pattern from Amazon as well
as on modern pattern styles.
Set of instructions \$5.00

Attic Copies 1921-1930

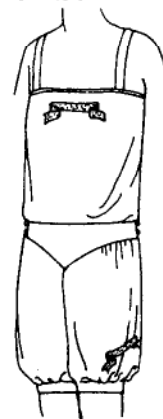
#3293
Bust 36
\$16.00



#6233
Bust 32 or 40
State size.
\$10.50



#5720
Bust 34 or 38
State size.
\$13.50



#6395
Bust 36
\$16.00



#6396
Bust 32
\$10.50



#6424
Bust 38
\$13.50



Amazon Drygoods
1 (800) 798-7979
411 Brady Street
Davenport, IA 52801-1518



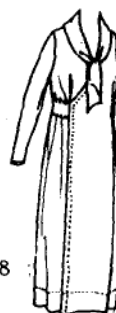
#9254
Bust 36
\$13.50
1920



#8268
Bust 38
\$13.50
1920



#7986
Bust 38
\$16.00
1920



#8998
Bust 38
\$14.50
1920

FOR FURTHER INSTRUCTIONS- Complete instructions on "grading" patterns to any size (changing the size to any other size or sizes, larger or smaller) including men, ladies, women, children and teen. Instructions can be used on any pattern from Amazon as well as on modern pattern styles.
Set of instructions \$5.00



1921-1930

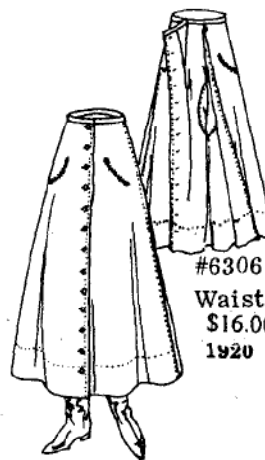


#7394
Bust 36
\$16.00
1920



#2307
Bust 38
\$16.00
1920

#8025
Bust 40
\$16.50
1920



#6306
Waist 28
\$16.00
1920



#9412
Waist 26
\$17.00
1920



#1150
Bust 34
\$16.00
1920



Amazon Drygoods
1 (800) 798-7979
411 Brady Street
Davenport, IA 52801-1518



#8607
Bust 36
\$16.00
1920-21



#2115
Large
\$16.00
1921



#8340
Bust 38
\$16.50
1921



#3055
Bust 35
\$17.00
1922

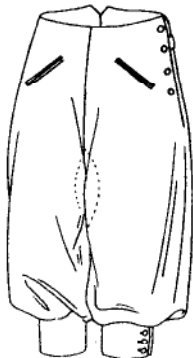


#6071
Waist 26
\$13.50
1922



#1564
Bust 38
\$15.00
1923

1921-1930



#9883
Waist 28
\$13.50
1923



#7086
Bust 36
\$10.00



#1332
Bust 38
\$15.00
1923



#4526
Bust 34
\$17.00
1923



#5362
Bust 36
\$15.00
1923



#2496
Bust 38
\$14.50
1924



#1093
Bust 36
\$14.50
1924



#1012
Bust 36
\$16.50
1924



#3110
Bust 34
\$17.00
1925



#2334
Bust 34
\$14.00
1925



#1908
Bust 36
\$14.00
1925



#2344
Bust 36
\$16.50
1926

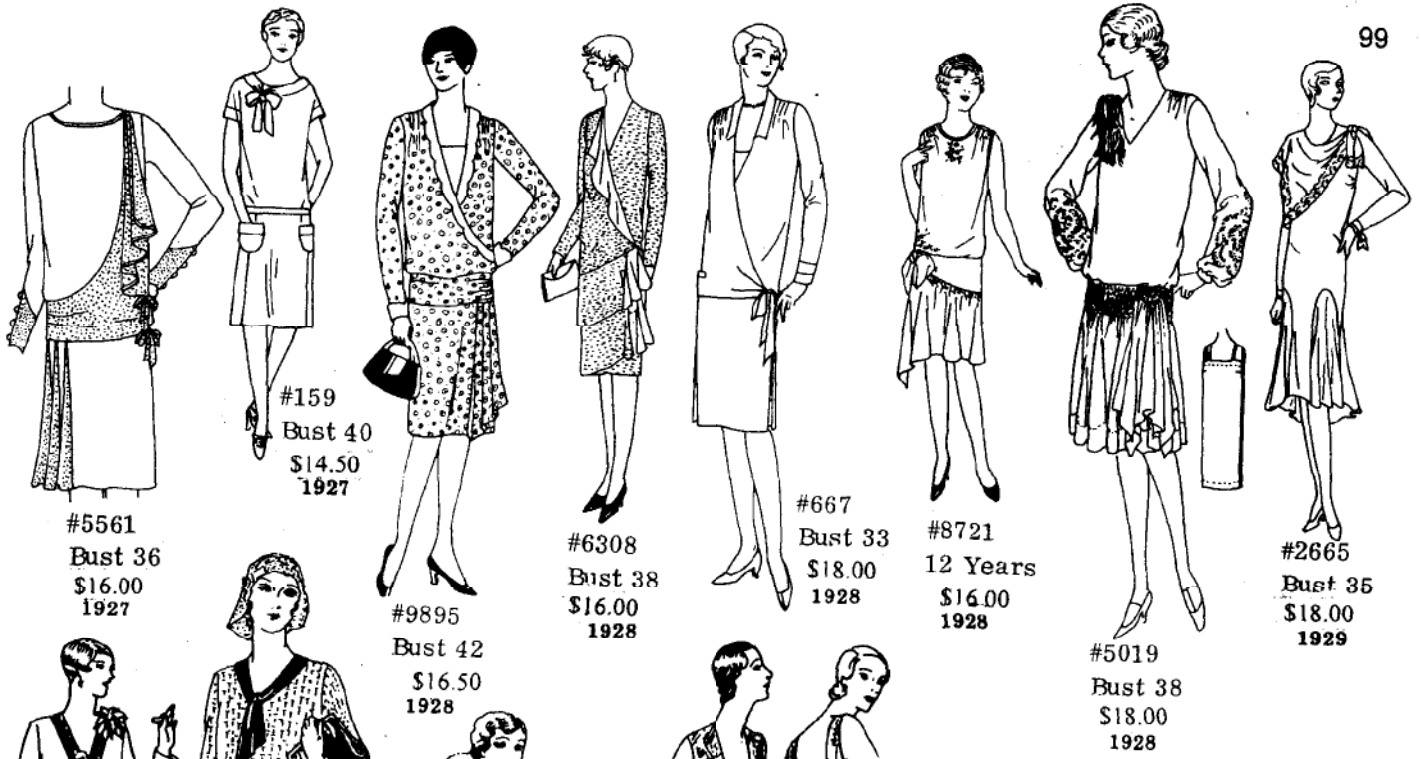


#6945
Bust 34
\$14.50
1926

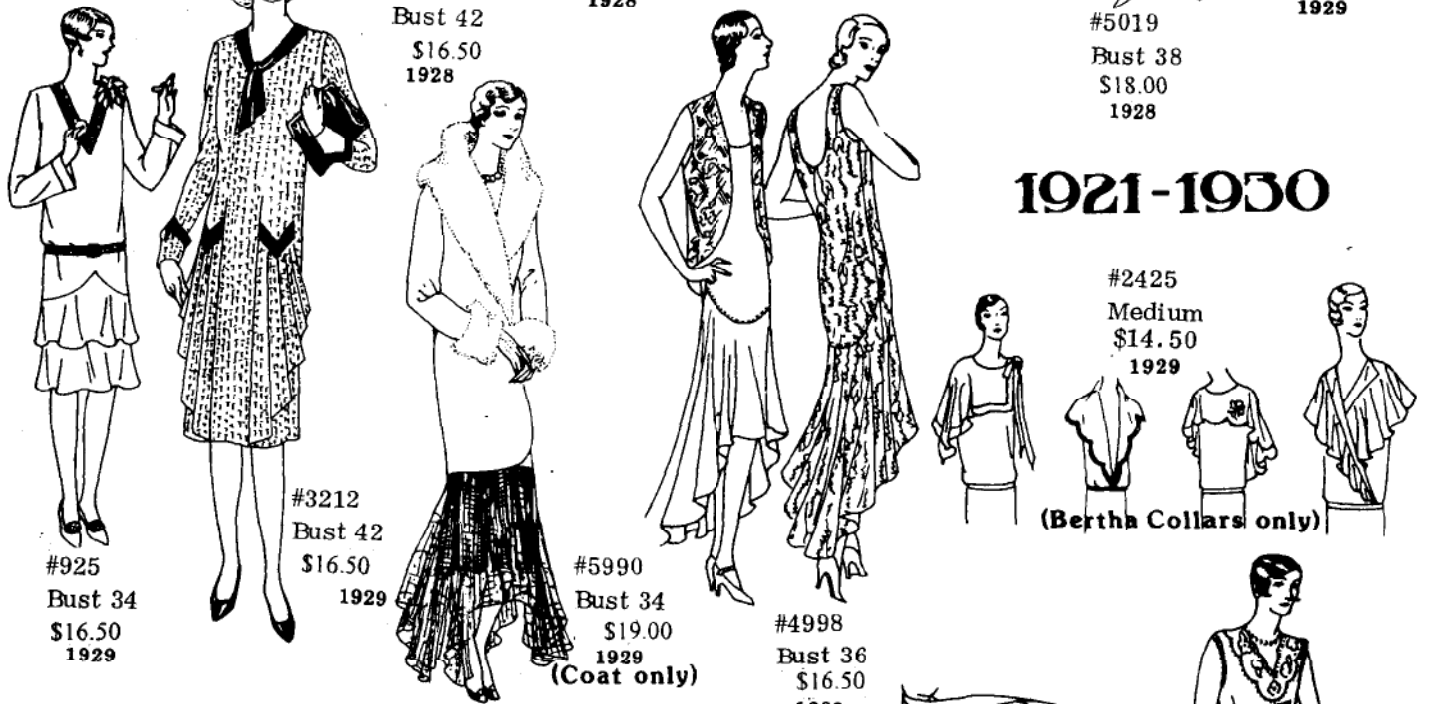


#2792
Bust 38
\$16.00
1926

Amazon Drygoods
1 (800) 798-7979
411 Brady Street
Davenport, IA 52801-1518



1921-1930

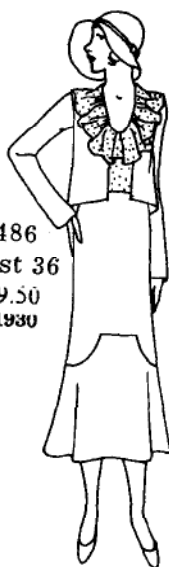


Amazon Drygoods
1 (800) 798-7979
411 Brady Street
Davenport, IA 52801-1518



1932
#807 B
Bust 32
\$20.75

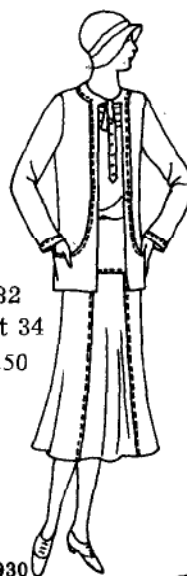
#6486
Bust 36
\$19.50
ca 1930



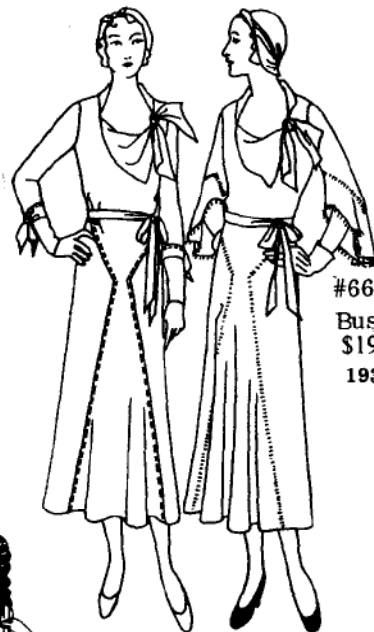
#6471
Bust 38
\$17.50
ca 1930



#6432
Bust 34
\$19.50



ca 1930



#6670
Bust 34
\$19.50
1931

FOR FURTHER INSTRUCTIONS
Complete instructions on "grading"
patterns to any size (changing the
size to either larger or smaller,
to any other size or sizes) includ-
ing men, ladies, women, children
and teen. Instructions can be used
on any pattern from Amazon as well
as on modern pattern styles.
Set of instructions \$5.00

Attic Copies 1931-1940



#708
Bust 42
\$13.50

ca 1930



ca 1931

#5948
Bust 38
\$18.00

#6773
Bust 32
\$22.00
1931



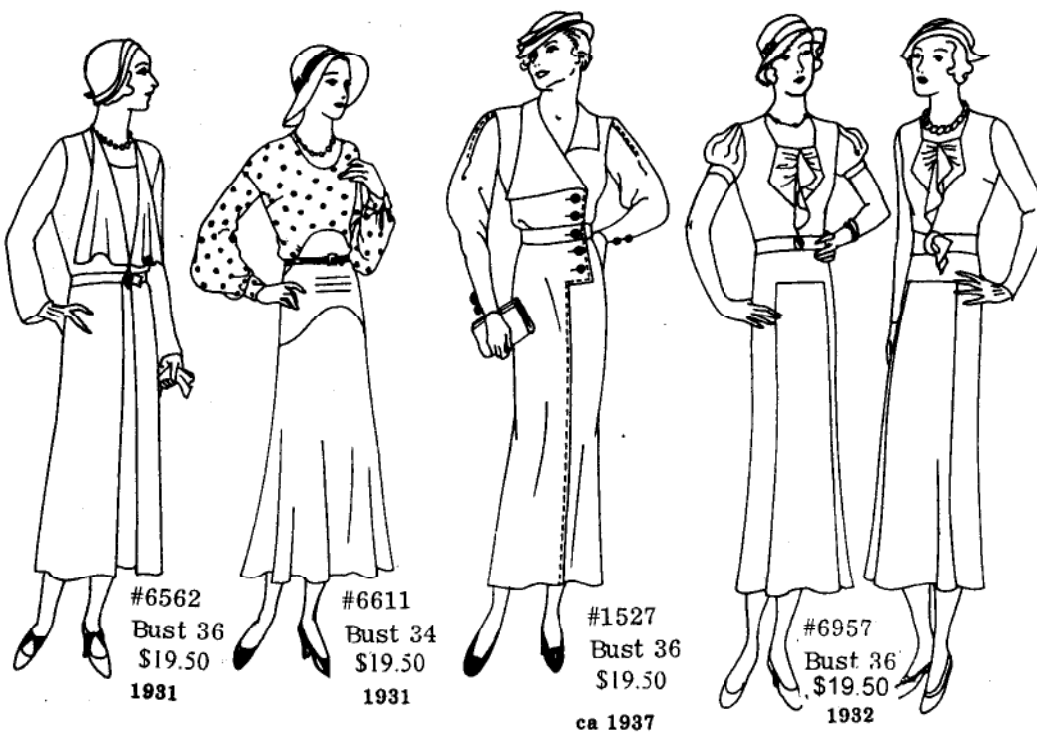
#6678
Bust 34
\$19.50
1931



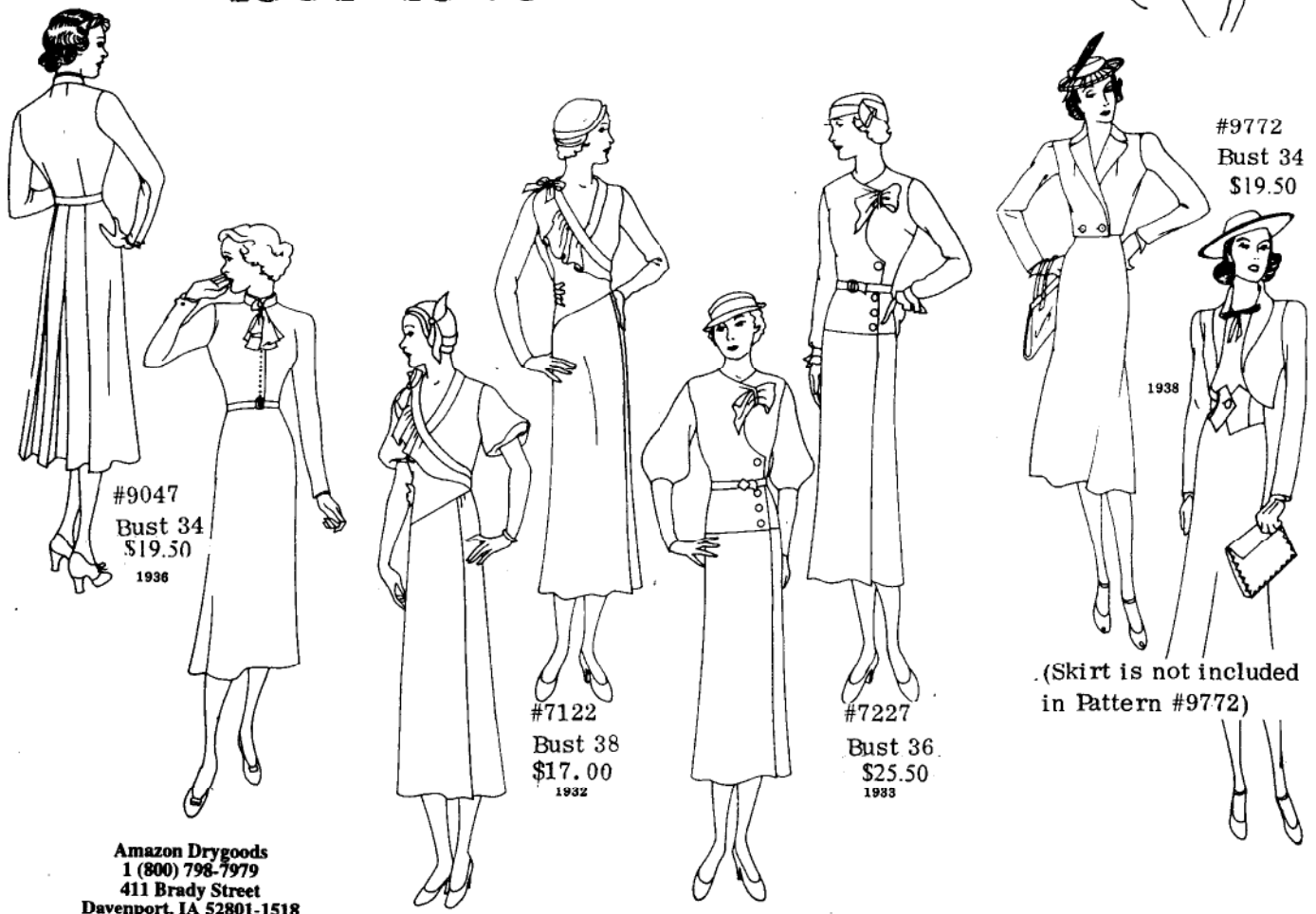
#6731
Bust 34
\$19.50
1931



Amazon Drygoods
1 (800) 798-7979
411 Brady Street
Davenport, IA 52801-1518



1931-1940





#5188
Bust 32
\$19.50



#4073
Bust 32
\$22.00



#4949
Bust 34
\$19.50



#4212
Bust 32
\$19.50



#4142
Bust 32
\$19.50



#9154
Bust 34
\$22.00

Attic Copies 1941-1950



#1318
Bust 32
\$16.00



#5413
Bust 30
\$19.50
Culottes



#5688
Bust 30
\$19.50



#3443
Bust 36
\$19.50



#3439
Bust 34
\$17.50



#501
Bust 34
\$22.00



#9587
Bust 34
\$17.50



#1680
Bust 30
\$16.00

Amazon Drygoods
1 (800) 798-7979
411 Brady Street
Davenport, IA 52801-1518



#3115 S, M or L \$12.95

Loose fitting peasant style blouse has short elasticized raglan sleeves with self ruffle. Neck ruffle forms casing for drawstring. Ankle length gathered skirt with ruffle has back zipper and button waistband closing. Simple bonnet has self ruffle and ribbon ties. Has tape trim outlines ruffles on blouse, skirt and bonnet.

The three dress patterns illustrated are not historically accurate reproductions of period garments. The two "pioneer" dresses are meant to be worn over full petticoats or a one ring hoop.

Small	Medium	Large	
8-10	12-14	16-18	(Size)
32"-33"	34"-36"	38"-40"	(Bust)
15"	28"	32"	(Waist)

#3105 Multi-size 8 - 16 \$15.95

"Roaring 20's" flapper dress with string straps and fringe trim.

The long fringe and sequin banding for the flapper dress are available from Amazon Drygoods. Send a LSASE for information.



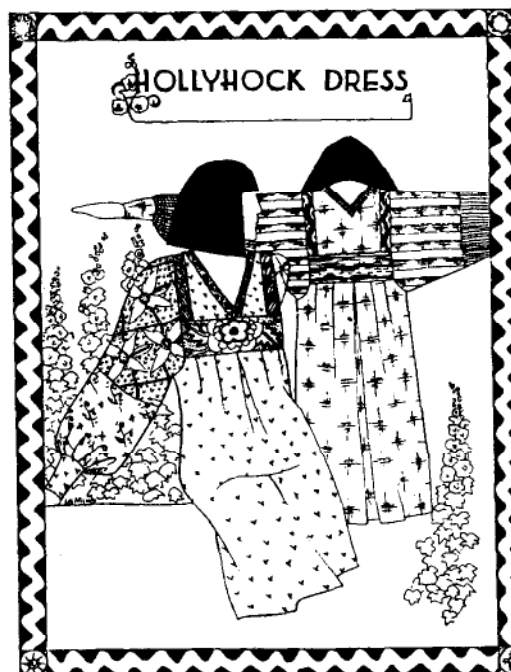
#3015 Individual sizes 8-18 (State size) (Limited stock of 20) \$12.95

Pioneer dress has fitted bodice with neckline ruffle, self binding, and pointed waist. Puffed sleeves have self ruffle. Ankle length, full gathered skirt has one ruffle near lower edge. Lace accents neck, sleeve and skirt ruffles. Simple bonnet has lace ruffle and ribbon ties.

SEW NATURAL



The "Fiesta" skirt, also known as a Navajo Skirt or a Broomstick Skirt, is a three tiered gathered skirt in two versions. "Broomsticking" is how the Navajos handled pleating these very full skirts. The style came back at the end of World War II, and now again in some very beautiful designer originals in silk. Pleating instructions are included. Multi-size waist measurements 22" - 34". \$12.75



The "Hollyhock Dress" can be made as shown for an easy fit dress, or use a shorter version as a blouse with the Fiesta Skirt. Co-ordinate with trim strips of matching fabric on both blouse and skirt. Multi-size S, M, L includes bust 30½" - 38". \$9.50

Amazon Drygoods
1 (800) 798-7979
411 Brady Street
Davenport, IA 52801-1518

Olde Country Costumes

These patterns and kits were developed for folk dancers, choral groups and church functions. Be properly dressed for a Smorgasbord or adapt for folk costumes of other ethnic groups. All ages and sizes can wear these unique costumes.

- timeless adaptations of old patterns, multi-sized, full scale and reusable.
- easy to follow illustrated sewing guides with American sewing procedures.
- complete with a brief history lesson about each outfit, and suggestions for fabrics.
- information on how to order the proper imported Pewter buttons, clasps, eyelets and buckles.

871
Multi-sized
8-18



871 MISSES JUMPER, BLOUSE & APRON Multi-sized 8 - 18 \$14.50
Jumper with snug bodice, high waistline seam, choice of two bodices. Full pleated skirt with hem tuck. Two apron styles, shorter Norwegian and longer Swedish. Soft blouse gathered into stand-up collar. Sleeves with small pleats at dropped shoulder and full button cuffs.



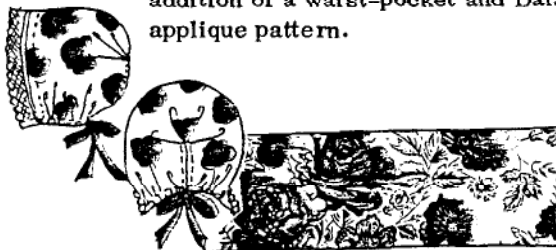
870 SWEDISH SOFT CAP KIT Adult size, includes pattern, white Linen-type fabric, lace and elastic. \$15.00

893 CAP PATTERN
As shown at right,
includes S, M, L \$7.50



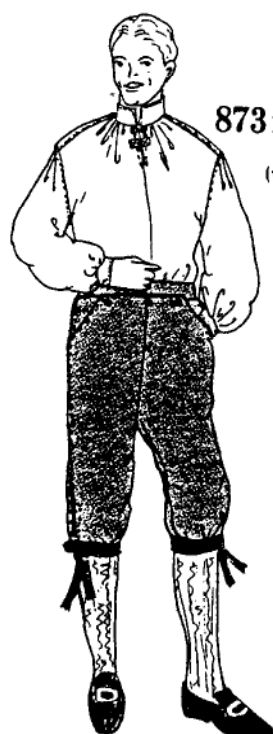
879
Multi-sized 18W-28W

879 WOMEN'S JUMPER, BLOUSE, APRON & WAIST-POCKET Multi-sized 18W - 28W \$17.50
Details are the same as Misses 871 with the addition of a waist-pocket and Dalarna applique pattern.



872 PRINT SWEDISH SOFT CAP KIT Adult size, includes pattern, "Rosenhättan", bright cotton floral fabric printed on the original wooden presses in Sweden, lace, elastic and ribbon. \$20.00

Amazon Drygoods
1 (800) 798-7979
411 Brady Street
Davenport, IA 52801-1518



873 Multi-sized
38-48
(waist 32-42)



875
Multi-sized
4-7

874
Multi-sized
8-16

873 MEN'S SHIRT & KNICKERS
Multi-sized shirt, 38-48, knickers in waist sizes 32-42. \$14.50
Soft shirt gathered into stand-up collar. Full sleeves pleated at the drop shoulder, gathered into cuffs. Optional shoulder yoke to trim or embroider. Top stitched knickers with buttoned broadfall, three button knee closings and optional buckles.

874 BOY'S SHIRT & KNICKERS
Multi-sized 8-16 \$12.50
Same description as Men's 873

875 LITTLE BOY'S SHIRT & KNICKERS Multi-sized 4-7 \$9.50
Same description as Men's 873



890 SWEDISH SHOULDER SHAWL KIT Pre-cut triangle, 36" x 36" x 51" of imported "Rosenhatten" print. \$25.00

891 SWEDISH CAP
Lined, readymade of "Rosenhatten" print. S(13"-13½"), M(14"-14½") L(15"-15½") L for teen/adult.
Shown on #879 \$25.00

**RED, NAVY OR BEIGE
HEAVY COTTON STOCKINGS**
Multi-size for Men or Women - \$8.95

BLACK, WHITE, BEIGE
Women's cotton stockings,
Sizes 9-11 \$7.25
(Add'tl. stockings in Gen. Catalog)

901 BOY'S VEST IN THREE STYLES
Not illustrated, contains styles A, B, & E as men's pattern. Multi-sized 4-14 . . . \$8.50



878



878 MEN'S VESTS IN FIVE STYLES
Multi sized 38-48 \$14.50
All styles are lined and have two front pockets with welt or flap finish and optional back belt. View E is Swedish, but all others may be used for other countries.

901 BOY'S VEST
Described below



876
Multi-sized
7-14

876 GIRL'S JUMPER, BLOUSE, APRON & WAIST-POCKET
Multi-sized 7-14 \$12.50
Same description as Women's 879

877 LITTLE GIRL'S JUMPER, BLOUSE, APRON & WAIST-POCKET Multi sized 2-6 \$10.50
Same description as Women's 879

Amazon Drygoods
1 (800) 798-7979
411 Brady Street
Davenport, IA 52801-1518